



STATISTICAL RELEASE

NOVEMBER- 2025

S.L.P. 2321, Zanzibar
7 Fumba street,
71125 Mjini Magharibi
Zanzibar - Tanzania

Telephone: +255 24 224 0134
Fax: +255 24 224 0135
Email: gs@ocgs.go.tz
Website: www.ocgs.go.tz

28th November, 2025

ZANZIBAR CONSUMER PRICE INDEX (ZCPI) FOR NOVEMBER 2025

ANNUAL HEADLINE INFLATION RATE RECORDED 3.34 PERCENT

The Inflation as measured by the Consumer Price Index for Zanzibar for the 12 months to November 2025 decreased to 3.34 percent from 3.38 percent registered in October 2025. Food and Non-Alcoholic Beverages inflation rate decreased to 5.27 percent in November 2025 compared to 7.09 percent in October 2025. The overall Index increased to 116.10 in November 2025 compared to 112.35 recorded in November 2024 (Table 1).

TABLE 1: CHANGES IN CONSUMER PRICE INDICES FOR NOVEMBER 2025

(BASE JULY, 2022 = 100)

Description	Weights 2019/20	Indices			% Annually October 2025	% Monthly	% Annually
		November 2024	October 2025	November 2025			
Food and Non-Alcoholic Beverages	41.856	120.29	130.18	126.63	7.09	-2.72	5.27
Alcoholic Beverages, Tobacco and Narcotics	0.183	126.79	128.64	130.98	2.06	1.82	3.31
Clothing and Footwear	6.321	103.76	109.43	109.27	5.79	-0.15	5.31
Housing, Water, Electricity, Gas and Other Fuels	25.801	106.34	105.56	106.37	-3.29	0.76	0.03
Furnishings, Household Equipment and Routine Household Maintenance	4.832	110.35	113.19	113.34	3.20	0.13	2.71
Health	1.295	106.78	108.32	109.03	1.45	0.65	2.11
Transport	9.125	108.00	111.15	111.63	2.39	0.43	3.36
Information And Communication	4.215	104.38	105.12	105.13	2.32	0.01	0.71
Recreation, Sport and Culture	1.132	103.16	108.99	109.80	5.65	0.74	6.44
Education	1.603	108.07	109.09	108.90	3.13	-0.17	0.77
Restaurants And Accommodation Services	1.445	113.18	115.29	115.29	1.86	0.00	1.86
Insurance And Financial Services	0.485	100.00	100.00	100.00	0.00	0.00	0.00
Personal Care, Social Protection and Miscellaneous Goods and Services	1.706	104.41	109.48	109.14	5.38	-0.31	4.53
ALL ITEMS	100.00	112.35	117.32	116.10	3.38	-1.04	3.34

ANNUAL FOOD AND NON-FOOD INFLATION RATES

Annual Inflation Rate for food decreased to 4.53 percent for the year ended November 2025 compared to 6.41 percent recorded for the year ended October 2025. The overall index for food increased to 126.31 in November 2025 from 120.83 recorded in November 2024, while Annual inflation rate for non-food increase to 2.42 percent in November 2025 compared to 1.04 percent in October 2025, overall index for non-food increased to 109.15 in November 2025 compared to 106.57 in November 2024, (Table 2). Products contribute to decrease annual inflation rate were Thailand Rice 12.80%, Basmat Rice 1.16%, Jasmin Rice 2.15%, Wheat Flour 1.57%, Maize Flour 0.48%, Green Cooking Banana 2.80%, Brown Sugar 8.17%, White Sugar 9.65%, Gas in cylinder 0.63%, Kerosene 6.25% Petrol 0.45%, and Diesel 0.96% (Table 3).

TABLE 2: FOOD AND NON-FOOD STATISTICS

Group	Weights	INDICES			% Annually October 2025	% Monthly	% Annually
		November 2024	October 2025	November 2025			
Food	40.53	120.83	129.96	126.31	6.41	-2.82	4.53
Non-Food	59.47	106.57	108.71	109.15	1.04	0.41	2.42
All Item	100.00	112.35	117.32	116.10	3.38	-1.04	3.34

MONTHLY HEADLINE INFLATION IN NOVEMBER 2025

During November 2025 the monthly headline inflation rate decreased to -1.04 percent compared to 0.06 percent recorded for the month ended October 2025. The monthly Food and Non-Alcoholic Beverages inflation rate for the month ended November 2025 decreased to -2.72 percent compared to 0.71 percent for the month ended October 2025 (Table 1).

The products that contribute to decrease monthly inflation rate are Thailand Rice 3.21%, Mbeya Rice 3.61%, Wheat flour 0.19%, Maize flour 1.75%, Sunflower Oil 0.36%, Yellow Cooking Banana 15.03%, Green Cooking Banana 24.24% (Table3).

Table 3: Monthly Average Prices for Selected Items 2024 – 2025

Items	Unit	AVERAGE PRICES (TZS)			% Monthly	% Annually
		November 2024	October 2025	November 2025		
Thailand Rice	1 kg	2,316	2,086	2,019	-3.21	-12.80
Mbeya Rice	1 kg	2,730	3,029	2,920	-3.61	6.95
Basmat Rice	1 kg	4,768	4,712	4,712	0.00	-1.16
Jasmin Rice	1 kg	2,984	2,919	2,920	0.02	-2.15
Wheat Flour	1 kg	2,041	2,012	2,008	-0.19	-1.57
Maize Flour	1kg	1,854	1,878	1,845	-1.75	-0.48
Flatbread	1 pc	528	548	548	0.00	3.79
Fish	1 kg	9,261	10,192	10,921	7.15	17.92
Sunflower oil	1 litre	6,765	7,584	7,557	-0.36	11.72
Edible Cooking Oils (OKI)	2 litre	6,560	6,936	6,936	0.00	5.73
Yellow cooking banana	1kg	2,579	3,797	3,227	-15.03	25.11
Green cooking banana	1kg	1,260	1,617	1,225	-24.24	-2.80
Brown sugar	1kg	2,714	2,475	2,492	0.69	-8.17
White sugar	1kg	2,824	2,541	2,552	0.43	-9.65
Gas in cylinders	6 kg	25,656	25,495	25,495	0.00	-0.63
Kerosene	1 litre	3,200	3,000	3,000	0.00	-6.25
Diesel	1 litre	3,033	2,944	3,004	2.04	-0.96
Petrol	1 litre	2,881	2,809	2,868	2.10	-0.45

Chart 1: Zanzibar Inflation Rate from November 2023 – November 2025

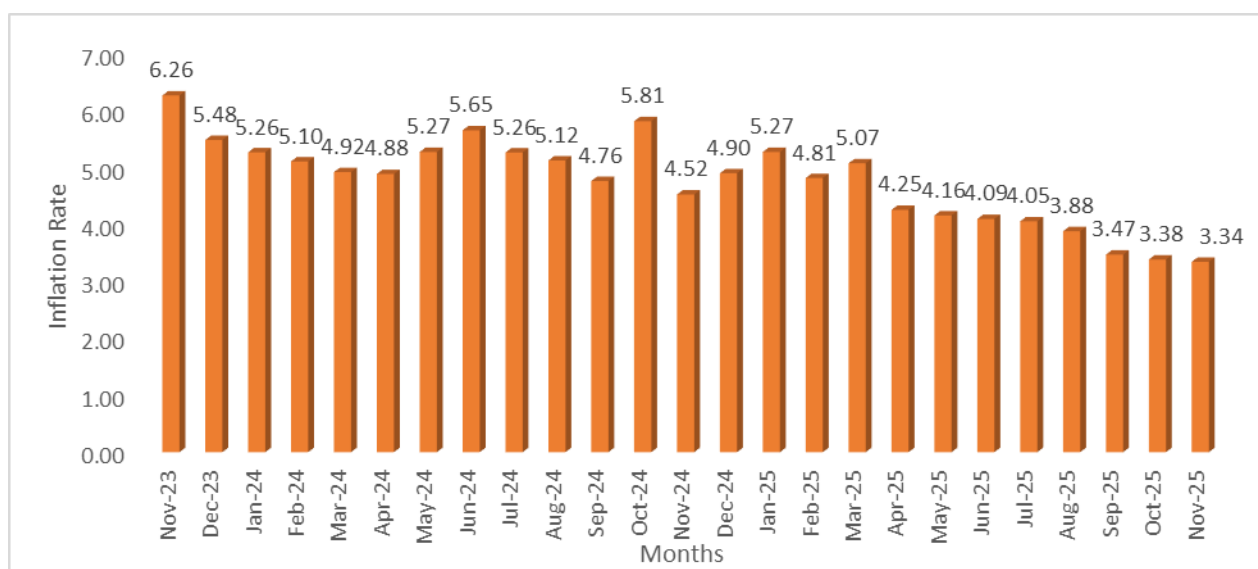


Chart 2: Zanzibar Inflation Rate for Food, Nonfood and All Items from November 2024 – November 2025



Explanatory Note

The CPI measures the average percentage changes over time (between two time periods) in the prices of a “basket” of consumer goods and services acquired by households (the market basket) in Zanzibar. The Zanzibar CPI covers prices of 398 items collected in 670 outlets in Unguja and Pemba urban Centers. The goods and services included in the ZCPI basket are classified according to the UN COICOP (Classification of Individual Consumption According by Purpose) with 13 divisions.

The ZCPI weights are based on both monetary and non-momentary expenditures relating to consumption for households in Zanzibar for the 2019/20 Household Budget Survey (HBS). The weight is based on expenditures of both urban and rural households. Both base price and index has reference period of July 2022.

The computation of indices at elementary level based on geometric mean of the price relative while at higher level the Laspeyres formula was used to compute the aggregate indices.

**For more clarifications please contact:
Director: Economic Statistics Section
OFFICE OF THE CHIEF GOVERNMENT STATISTICIAN
Zanzibar.**

Appendix 1

	Indices					Monthly % Change				Annually % Change			
	Food ¹	Energy ² and Fuels	Core Exclude Food and Energy	Fish and Sea Food		Food	Energy and Fuels	Core Exclude Food and Energy	Fish and Sea Food	Food	Energy and Fuels	Core Exclude Food and Energy	Fish and Sea Food
Share	43.08	8.12	48.8	6.32									
2024	Jan	115.53	107.00	103.79	97.32	2.88	-0.43	0.51	3.3	9.02	5.2	1.83	0.05
	Feb	116.29	107.28	103.94	107.38	0.66	0.26	0.15	10.34	8.71	4.52	1.86	19.43
	March	115.72	108.68	104.02	107.25	-0.49	1.3	0.08	-0.12	7.47	8.01	2.03	21.17
	April	119.99	109.79	104.13	106.49	3.69	1.03	0.1	-0.7	7.89	7.71	1.53	11.47
	May	120.26	110.26	103.86	117.28	0.22	0.42	-0.26	10.13	8.74	9.65	1.25	35.42
	June	121.07	112.99	103.96	119.06	0.68	2.48	0.09	1.51	10.35	5.50	1.25	29.71
	July	121.25	114.94	103.97	103.20	0.15	1.72	0.02	-13.32	9.01	11.32	0.67	1.61
	Aug	122.31	113.39	103.98	111.69	0.87	-1.35	0.01	8.22	8.75	8.94	0.99	12.28
	Sep	123.12	117.61	103.97	112.91	0.66	3.73	-0.01	1.10	7.36	11.61	1.04	12.98
	Oct	121.30	122.52	105.08	108.91	1.47	4.18	1.07	3.54	8.18	15.68	1.85	12.21
	Nov	120.08	112.91	105.44	91.62	-1.01	-7.85	0.34	-15.88	6.73	6.15	2.12	-4.80
	Dec	121.40	108.81	105.79	98.25	1.10	-3.63	0.34	7.24	8.11	1.25	2.45	4.29
2025	Jan	123.64	115.82	106.94	98.75	1.84	6.44	1.09	0.51	7.01	8.24	3.04	1.04
	Feb	123.50	115.42	107.03	104.31	-0.11	-0.35	0.08	5.63	6.20	7.58	2.97	-2.86
	March	123.53	115.80	107.31	102.07	0.03	0.33	0.26	-2.15	6.76	6.56	3.16	-4.83
	April	125.50	118.63	107.50	98.60	1.59	2.44	0.18	-3.40	4.59	8.05	3.24	-7.41
	May	125.55	116.67	107.61	103.59	0.03	-1.65	0.10	5.06	4.40	5.82	3.61	-11.68
	June	126.94	116.16	107.65	101.14	1.11	-0.44	0.04	-2.36	4.84	2.81	3.55	-15.05
	July	127.04	117.13	107.82	94.17	0.08	0.83	0.16	-6.89	4.77	1.90	3.71	-8.75
	Aug	128.02	114.35	107.73	107.00	0.77	-2.37	-0.08	13.63	4.67	0.85	3.61	-4.19
	Sep	129.20	112.03	107.92	117.05	0.63	-2.04	0.17	9.39	4.63	-4.75	3.80	3.67
	Oct	129.96	108.39	107.86	101.60	0.7	-3.25	-0.05	-13.20	6.94	-11.54	2.65	-6.72
	Nov	126.31	111.02	107.96	104.65	-2.65	2.43	0.09	3.00	5.17	-1.68	2.40	14.22

¹ Food - combining food consumed at home and food consumed in restaurants

² Energy and Fuels - Combining Electricity and other Fuels for use at Home with Petrol and Diesel