



Zanzibar Official Statistics Provider

Quick Figures	
2013	
GDP Growth Rate: 7.4 per cent	
GDP per Capita: TSH 1,077,000 Inflation Rate: 5.0 per cent	
Population : 1.3M Population Growth Rate : 2.8	

## **SOCIO – ECONOMIC SURVEY 2013**

### **Preliminary Statistical Report**

Office of the Chief Government Statistician

**Zanzibar**

March 2014

## Foreword

Economic Survey 2013 is prepared to inform and appraise the progress the country has achieved on economic policies and programs that the Government of Zanzibar launched. These have been designed to build a prosperous, modern and just Zanzibar has given higher priority on the issue of financial inclusiveness so as to uplift the economic status of the people and reduce poverty.

The Economic Survey reflects and narrates the evaluation of present situation, tracking changes, assessing trends and appraising achievements with respect to socio-economic environment.

The Survey is prepared in an organized way, data tables are collated; and above all the Report is published to make it collectable and more useful to all stakeholders. It covers overall socio-economic analysis, achievements and indicates challenges during the period of Survey. I am confident that this Survey will prove useful to serve as a handbook for Policy makers, Intellectuals, Professionals, Researchers, Teachers, Students, Industrialists, Entrepreneurs, and other people interested on keeping track of the country's economic development.

Finally, I would like to thank all those involved in the preparation of this Economic Survey especially; the staff of the Office of the Chief Government Statistician, the concerned officials of experts in specific areas of specialization. Likewise, I express my grateful thanks to all the line Ministries, Departments and other entities, which provided necessary data, information and other details in the process of completing this task.

.....  
Mohammed H. Rajab  
Chief Government Statistician,  
Office of the Chief Government Statistician,  
Zanzibar.

## INQUIRIES

For further information contact the  
Chief Government Statistician  
Office of the Chief Government Statistician Zanzibar  
P.O. Box 2321  
Phone +255 24 22 31 869  
Fax + 255 24 22 31 742  
Email: [economicstat@ocgs.go.tz](mailto:economicstat@ocgs.go.tz)  
Website: [www.ocgs.go.tz](http://www.ocgs.go.tz)

## Table of Contents

Foreword .....	i
Table of Contents .....	ii
Executive Summary .....	ix
Background .....	1
Introduction .....	1
Objectives.....	1
Methodology and Coverage .....	1
ECONOMIC STATISTICS .....	3
1.1 National Accounts Estimates .....	3
Table 1.1.1: Summary Statistics, 2009 – 2013 .....	4
Table 1.1.2: Gross Domestic Product by Activity 2009 – 2013, (Current Price) .....	5
Table 1.1.3: Gross Domestic Product by Activity 2009 -2013, (Percentage Shares) .....	6
Table 1.1.4: Gross Domestic Product 2009 – 2013, (Quantity Index).....	7
Table 1.1.5: Gross Domestic Product 2009 – 2013, (Constant Price Growth Rates) .....	8
Table 1.1.6: Gross Domestic Product 2009 – 2013, Implied Deflators (2001=100) .....	9
Table 1.1.7: Gross Domestic Product (GDP), 2009 – 2013, Constant 2001 Prices.....	10
Table 1.1.8: Capital Formation by Type of Asset, 2009 – 2013,.....	11
1.2 Government Finance .....	12
1.2.1 Revenues .....	12
1.2.2 Expenditures.....	12
Table 1.2.1.1: Government Domestic Revenue Collections, 2008/09 – 2012/13.....	13
Table 1.2.1.2: Government Domestic Revenue Collections, 2008/09 – 2012/13. cont'd .....	14
Table 1.2.2.1: Total Government Expenditure, 2008/09 – 2012/13 .....	15
2.0 Real Statistics .....	16
2.1 Consumer Price Index.....	16
Table 2.1.1: Zanzibar Consumer Price Index, 2009– 2013 .....	17
Table 2.1.2: Zanzibar Annual Inflation Rate, 2009 – 2013 .....	17
Table 2.1.3: Monthly Inflation Rate for 2013 .....	18
Table 2.1.4: Zanzibar Consumer Price Index, 2013 .....	19
Figure 2.1.1: Food and Non-Food, 2009 - 2013 .....	20
Figure 2.1.2: Annual Inflation rates, 2009 - 2013.....	20
Figure 2.1.3: Monthly Inflation Rates, 2013.....	21

3.1 Tourism Statistics.....	22
Table 3.1.1: Monthly Record of Visitor Arrivals in Zanzibar by Country, 2013 .....	23
Table 3.1.2: Monthly Records of Tourist Arrivals by Country of Residence through Airport, 2013.....	24
Table 3.1.3: Monthly Records of Tourist Arrivals by Country of Residence through Seaport, 2013.....	25
Figure 3.1.1: Tourist Arrival from Top ten Country, 2013 .....	26
Table 3.1.4 Tourist Arrival by month, 2009 – 2013 .....	26
Figure 3.1.2: Tourist Arrivals by Region, 2009 – 2013 .....	27
Table 3.1.5: Annual Record of Tourist Arrivals in Zanzibar by Country of Residence 2009- 2013 .....	28
Table 3.1.6: Percentage Annual Record of Tourist Arrivals in Zanzibar by Country of.....	29
Figure 3.1.3: Monthly Visitor Arrivals, 2009 – 2013 .....	30
Table 3.1.7: Approved Hotel/Guests by District and Grading in Zanzibar, 2013 .....	31
Figure: 3.1.4: Record of Number of Rooms and Beds by grading, 2013 .....	32
Table 3.1.8: Hotel and Guest Houses by Grading, 2009 - 2013 .....	32
Table 3.1.9: Number of Rooms and Beds in Registered Hotels and Guest Houses by District, 2009-2013 .....	33
Table 3.1.10: Aircraft movements at Abeid A. Karume International Airport, 2013.....	33
3.2 Trade Statistics .....	34
3.2.1 International Trade Statistics .....	34
3.2.2 Total Value of Trade and Trade Balance .....	34
Table 3.2.2.1: Balance of Trade, 2009 – 2013 .....	35
Figure 3.2.2.1: Trend of Imports and Exports Trade in Zanzibar, 2009-2013.....	35
Table 3.2.2.2: Value of Exports by Section, 2009 – 2013 .....	37
Table 3.2.2.3: Value of Exports by Country of Destination, 2009 – 2013 .....	38
Figure 3.2.2.2: Exports to Main Countries, 2009-2013 .....	39
Table 3.2.2.4: Value of Direct Import by Section, 2009 – 2013.....	40
Table 3.2.2.5: Direct Imports by Country of Origin, 2009 – 2013 .....	41
Figure 3.2.2.3: Imports from Main Countries, 2009-2013.....	42
Table 3.2.2.6: Imports of Fuel Products, 2009– 2013.....	42
Table 3.2.2.7: Supply of Fuel Products, 2011-2013 .....	43
Figure 3.2.2.4: Supply of Fuel Products, 2011-2013 .....	43
3.2.3 Inter-State Trade Statistics .....	43

Table 3.2.3.1: Transfer of Goods between Zanzibar Tanzania Mainland, 2009-2013 .....	44
3.3 Transport Statistics.....	44
Table 3.3.1: Traffic Handled at Zanzibar Seaports, 2009 – 2013 .....	45
Table 3.3.2: Aircraft Movements, Passengers and Cargo Handled in Zanzibar Airport, 2009-2013 .....	45
Table 3.3.3: Motor Vehicles Licensed, 2009- 2013.....	46
Table 3.3.4: Zanzibar Road Network (kilometres) as at December, 2013.....	46
Table 3.3.5: Licensed Broadcasting Stations, Telephone and Internet Operators in Zanzibar 2010-2013 .....	47
Table 3.3.6: Reported Victims of Road Accidents Zanzibar, 2009- 2013.....	47
Table 3.3.7: Reported Victims of Road Accidents in Unguja, 2009- 2013 .....	48
Table 3.3.8: Reported Victims of Road Accidents Pemba, 2009- 2013 .....	48
4.0 Production Statistics.....	49
4.1 Agriculture Statistics.....	49
Table 4.1.1: Quantity and Value for Clove, 2011- 2013.....	49
Table 4.1.2: Quantity and Value of Production of Main Cash Crops, 2009- 2013.....	51
Table 4.1.3: Area Planted by Food Crops, 2009- 2013.....	52
Table 4.1.4: Quantity and Value of Production of Food Crops, 2009- 2013.....	53
Table 4.1.5: Quantity and Value of Forest Products, 2009- 2013 .....	54
Table 4.1.6: Estimated Fish Catches and Value by District, 2009- 2013 .....	55
Table 4.1.7: Estimated Fish Catches and Value by Species, 2009- 2013 .....	57
4.2 Industry Statistics.....	58
Table 4.2.1: Production in Selected Private Industries (Quantity), 2009 – 2013 .....	60
Table 4.2.2: Value of Goods Produced for Selected Private Industries, 2009 - 2013 .....	61
Table 4.2.3: Value of Goods Produced in Public Industries, 2009 - 2013.....	61
Table 4.2.4: Quantity of Electricity Distributed, 2009 – 2012 (KWH “000”).....	62
Table 4.2.5: Value of Electricity Distributed, 2009 - 2013 (Tshs “000”).....	62
Table 4.2.4a: Quantity of Electricity Distributed, 2013 (KWH “000”) .....	63
Figure 4.2.1: Quantity of Electricity Distributed, 2013 .....	63
Table 4.2.5a: Value of Electricity Distributed, 2013 .....	64
Table 4.2.6: Total Number of New Customers Connected to National 2009 - 2013.....	64
Table 4.2.7: Total Number of Boreholes Drilled from 2009 – 2013 .....	64
Table 4.2.8: Water Supply and Revenue Collection by Region, 2013 .....	65
Table 4.2.9: Approved Projects From 2009 - 2013.....	65

Table 4.2.10: Approved Employment from 2009 - 2013.....	66
Table 4.2.11: Approved Capital 2009 – 2013.....	67
SOCIAL STATISTICS .....	68
5.1 Education Statistics .....	68
Table 5.1.1: Public and Private Education Facilities by Category, 2009- 2013 .....	70
Table 5.1.2: Public Education Facilities by Category, 2009- 2013 .....	70
Table 5.1.3: Private Education Facilities by Category, 2009- 2013 .....	71
Table 5.1.4: STD I Enrolment in Public Schools by Sex, 2009- 2013 .....	71
Table 5.1.5: Admission to STD 1 Public Schools by District, 2009- 2013 .....	71
Table 5.1.6: Admission to STD 1 Private School by Sex, 2009- 2013.....	72
Table 5.1.7: Pupils in Public and Private Primary Schools, 2009- 2013.....	73
Table 5.1.8: Pupils in Public Primary Schools, 2009- 2013. ....	73
Table 5.1.9: Pupils in Private Primary Schools by Grade and Gender, 2009- 2013.....	74
Table 5.1.10: Distribution of Pupil in Public and Private Primary Schools by Grade and Gender, 2009- 2013.....	74
Table 5.1.11: Pupils in Public and Private Secondary Schools, 2009- 2013. ....	75
Table 5.1.12: Pupils in Public Secondary School, 2009- 2013.....	75
Table 5.1.13: Pupils in Private Secondary Schools, 2009- 2013 .....	76
Table 5.1.14: Distribution of Pupils in Public and Private Secondary Schools by Sex and Form, 2009- 2013.....	76
Table 5.1.15: Pupils in Public and Private Advanced Secondary Schools by Sex and Form, 2009- 2013 .....	77
Table 5.1.16: Distribution of Pupils in Public and Private Advanced Secondary Schools by Sex and Form, 2009- 2013 .....	77
Table 5.1.17: Form II Examination Results, 2009- 2013.....	78
Table 5.1.18: Distribution of Form II Examination Results by Sex, 2009- 2013.....	78
Table 5.1.19: Form IV Examination Results by Sex and Grade, 2009- 2013. ....	79
Table 5.1.20 Distribution of Form IV Examination Results by Sex and Grade, 2009- 2013..	79
Table 5.1.21: Form VI Examination Results by Sex and Grade, 2008/09 – 2012/13.....	80
Table 5.1.22 Distribution of Form VI Examination Results by Sex and Grade, 2007/08 – 2011/12.....	80
Table 5.1.23: STD I - Form IV Pupil Teacher Ratio in Private and Public Schools, 2009- 2013.....	81
Table 5.1.24: STD I - Form VI Teachers in Public Schools by District, 2009- 2013.....	81

Table 5.1.25: STD I - Form VI Teachers in Public and Private Schools by Training, .....	82
2009- 2013 .....	82
5.2 Health Statistics.....	82
Table 5.2.1: Medical, Paramedical and Nursing Professionals, 2012-2013 .....	84
Table 5.2.2: Medical Facilities by Category, 2009- 2013.....	85
Table 5.2.3: Distribution of Public Health Facilities by District, 2013 .....	85
Table 5.2.4: Aggregates of In-Patients and Out-Patients in Public Health Facilities .....	86
2009-2013 .....	86
Table 5.2.5: In-patients and Out-patients by Public Hospital 2013 .....	86
Table 5.2.6: In-patients and Out-patients by Public Hospital 2012 .....	87
Table 5.2.7: In - Patients in Public Hospitals, 2009- 2013 .....	88
Table 5.2.7a: Top Ten Reported Diagnosis (Out-Patients) Zanzibar, 2013 .....	89
Table 5.2.8: Reported Vaccination Coverage in Zanzibar, 2009-2013 .....	89
Table 5.2.9: Reported Deaths in Public Hospitals Zanzibar, 2009- 2013.....	90
Table 5.2.10: Reported Drug Affected People, 2009- 2013 .....	91
Table 5.2.11: Distribution of Reported Drug Affected Persons by District at Unguja,.....	91
2009- 2013 .....	91
Table 5.2.12: Distribution of Reported Drug Affected Persons by District at Pemba,	
2013.....	91
Table 5.2.13: Distribution of Reported Drug Affected by Age Group 2009- 2013 .....	92
Table 5.2.14: Persons with Disability by District and Sex, 2013.....	93
Table 5.2.15: Reported Number of Persons with Disability by Age Group and Type of	
Disability- Zanzibar, 2013 .....	94
Table 5.2.15a: Children Cared by type of Centre and Sex 2009- 2013 .....	95
Table 3.2.15b: Old People Cared by type of Centre and Sex 2009- 2013 .....	95
Table 5.2.16a: Number of Sober Houses by Sex of Residents in Zanzibar, 2013 .....	95
Table 5.2.16b: Clients in Sober Houses in Zanzibar 2013.....	96
Table 5.2.16c: Distribution of Clients in Each Sober House in Zanzibar 2013.....	96
Table 5.2.16d: Clients in Each Sober House by Age Group and Sex in Zanzibar, 2013 .....	96
5.3 Sports Statistics.....	97
Table 5.4.1a: Type of Sports Associations Registered by District in Unguja, 2013. ....	98
Table 5.3.1b: Type of Sports Clubs Registered by District in Pemba, 2013. ....	99
Table 5.3.2 Participation of Zanzibar National Team in CECAFA, 2009- 2013 .....	99
Table 5.3.3 Number of Referees by FIFA Badges and Sex, 2010- 2013.....	99

Table 5.3.4: Zanzibar Football Players' Playing Outside Zanzibar, 2010- 2013.....	100
Table 5.3.5: Number of Football Teams by Division, 2010- 2013 .....	100

## Abbreviations:

ADO	Assistant Dental Officer
AGO	Automotive Gas Oil
AMO	Assistant Medical Officer
BP	British Petroleum
BOT	Bank of Tanzania
BCG	Bacillus Calmette Guenie
CECAFA	Council of East and Central Africa Football Associations
CFS	Consolidated Fund Services
CPI	Consumer Price Index
DPTHD	Diptteria Pertusis Tetanus Hepatitis (B)
FIFA	Federation Internationale de Football Association (International Federation of Association Football)
GAPCO	Gulf Africa Petroleum Corporation
GDP	Gross Domestic Products
HBS	Household Budget Survey
IDO	Industrial Diesel Oil
IK	Illuminating Kerosene
ISIC	International Standard of Industrial Classification
MD	Medical Doctor
MDAs	Ministries, Departments and Agencies
MDGs	Millennium Development Goals
MDRI	Multilateral Debt Relief Initiative
MKUZA	<i>Mkakati wa Kukuza Uchumi na Kupunguza Umasikini Zanzibar</i>
MSP	Motor Sprit Premium
N/A	Not Applicable
OCGS	Office of the Chief Government Statistician
OPV	Oral Polio Vaccine
PHCC	Primary Health Care Centre
PHCU	Primary Health Care Unit
SAA	South African Airline
SMEs	Small Medium Enterprise
TB	Treasury Bills/Bonds
TRA	Tanzania Revenue Authorities
TT	Tetanus Toxoid
TUKUZA	<i>Tumia Umeme Kwa Uangalifu Zanzibar</i> (Prepaid Electricity Tariff)
URT	United Republic of Tanzania
ZAWA	Zanzibar Water Authority
ZECO	Zanzibar Electrical Corporation
ZIPA	Zanzibar Investments Promotion Authority
ZRB	Zanzibar Revenue Board
ZSGRP	Zanzibar Strategy for Growth and Reduction of Poverty
ZSTC	Zanzibar State Trade Corporation

## **Executive Summary**

The Economic Survey is an annual publication from Office of Chief Government Statistics. The executive summary provides the statistical summary on various socio-economic indicators for Zanzibar. Some figures in this edition may vary from those in the earlier editions due to the updates. Some of the 2013 data presented in this edition are provisional and could be revised in subsequent publication. The publication is divided into two sections namely Economic and Social Statistics.

## **National Accounts**

- In 2013 GDP at constant (2001) market prices was estimated to grow by 7.4 percent. The three broad sectors below registered growth as indicated;
- Agriculture, forestry and fishing (3.6 percent)
- Industry (8.2 percent)
- Services (8.6 percent)

## **Consumer price Indices**

- Annual Headline inflation rate registered a single digit inflation rate of 5.0 percent in 2013 compared to inflation rate of 9.4 percent recorded in 2012
- Annual Food inflation during 2013 declined to 1.8 percent from 6.7 percent recorded in 2012
- During 2013 lower prices of some items such as Rice, Wheat Flour, Sugar and Petrol contributed to decrease for the inflation rate

## **Government Finance Statistics**

- In nominal terms, domestic revenue rose by 18.3 percent from TSh. 225,046.77 billion in FY 2011/12 to TSh. 266,161.33 billion in FY 2012/13.
- Taxes revenue remained the main source of government revenue was 233,379.36 in FY 2012/13
- Non -Taxes revenue is the secondary source of government revenue was 32,781.97 in FY 2012/13

## **Agriculture**

- Total value of Clove was Tsh. 78,781,866,000 in 2013
- Total value of Seaweed was Tsh 4,134,890,000 in 2013
- Total estimated value of fish Catch was Tsh 111,872,940,000 in 2013

## **Industrial Production**

- Production of bread increased from 114,858,000 bread in 2012 to 127,815,000 bread in 2013
- Production of beverages declined from 14,409,000 litres in 2012 to 12,409,000 litres in 2013
- Production of window (UPVC) decreased from 201Pcs in 2012 to 130 Pcs in 2013

## **Electricity**

- Customers connected to National Power Grid increased from 8,721 in 2012 to 10,684 customers in 2013.
- Distribution of electricity increased from 223,407,000 Kwh in 2012 to 246,962,000 Kwh in 2013

## **Transport**

- Number of passengers at Seaports increased from 2,085,679 in 2012 to 2,862,188 in 2013
- Number going vessels increased to 186 in 2013 from 156 in 2012.
- Number of trips enter/exit decreased to 4,083 in 2013 from 4,992 in 2012.

## **Communications**

- In 2013, number of radio stations of private owner slightly increased to 12 compared to 11 in 2012

## **Migration and Tourism**

- Total number of Tourist Arrived was 181,301 in 2013 compared to 169,223 recorded in 2012

## **Trade**

- Total value of export was Tsh. 87,799.6 million in 2013 compared to Tsh. 67,390.5 million in 2012
- The leading Countries exported in 2013 were India, United Arab Emirates and Singapore,
- Total value of Imports was Tsh. 208,051.9 million in 2013 compared to Tsh. 271,273.1 million in 2012
- The leading Countries Imported in 2013 were United Arab Emirates ,China, Australia India, Pakistan, United Kingdom, Singapore, Turkey, Italy and Japan

Section two discusses Social Statistics relating to Education, Health and Road accidents. Below are the highlights of the Section:

## **Education**

- Pupils Enrolment in Public schools standard one male was 20,008 in 2013
- Pupils Enrolment in Public schools standard one female was 19,214 in 2013
- Total number of Enrolment in public school was 39,222 in 2013
- Pupils Enrolment in private schools standard one male was 1,750 in 2013
- Pupils Enrolment in private schools standard one female was 1,890 in 2013
- Total number of Enrolment in private school was 3,640 in 2013
- Total number of pupils in primary schools (Public and Private) from standard I to VII was 247,352 in 2013
- Total number of candidates sit for form II examination was 19,322 in 2013
- Total number of candidates who passed form II examination was 11,483 in 2013
- Total number of candidates who failed form II examination was 7,839 in 2013
- Total number of candidates sit for form IV examination was 11,204 in 2013
- Total number of candidates who passed form IV examination was 8,110 in 2013
- Total number of candidates who failed form IV examination was 3,094 in 2013
- Total number of candidates sit for form VI examination was 2,067 in 2013/14
- Total number of candidates who passed form VI examination was 1,636 in 2013/14
- Total number of candidates who failed form VI examination was 431 in 2013/14
- Pupil teacher ratio in private and public school standard one to form IV in 2013 was 25

- Total number of teachers in Public school from standard one to form VI was 9,894 in 2013
- Total number of teachers in Private school from standard one to form VI was 1,524 in 2013

**Road Accident**

- Reported number of person killed because of road accident was 141 in 2013 compared to 139 persons killed in 2012
- Reported number of person injured because of road accident was 1,041 in 2013 compared to 1,102 persons in 2012
- Reported number of traffic offences because of road accident was 16,683 in 2013 compared to 17,494 in 2012

## **Background**

### **Introduction**

The 2013 Socio-Economic Survey Report is another series of annually survey conducted by Office of the Chief Government Statistician containing data for socio-economic status for the trend of five years 2008 to 2012. The report provides an insight into the country's economic performance and impact of social services. These results will provide a better understanding of the cause and impact of socio-economic initiatives in Zanzibar.

The purpose of this survey was to collect annual statistical information that will be used not only for the budget preparation process but also as tools for the future development plans. Furthermore, the results for the 2013 economic survey are essential for monitoring and evaluation of the projects and programmes, specifically Zanzibar Strategy for Growth and Reduction of Poverty (ZSGRP) in its Swahili acronym (MKUZA). The main sources of statistical information covered in this report were Government institutions, Union institutions, and private sectors operating in the Zanzibar territory.

### **Objectives**

The overall objective of the economic survey was to collect and compile socio-economic data to be used in the evaluation of socio-economic performance of the year 2013, and for the planning process for the year 2014. Other objectives are:

- To have a benchmarking data on all socio-economic sectors of the country
- To provide information which will be used to monitor the broadest trend in a national economic performance
- To provide aggregate sectoral information on production of goods and services from the economy
- To provide socio-economic indicators used for monitoring and evaluation for Zanzibar Strategy Growth and Reduction of Poverty (ZSGRP ) and Millennium Development Goals (MDGs)
- To remain as a main source of socio-economic data

### **Methodology and Coverage**

The data collection for the 2013 socio-economic survey started earlier on December 2012 and took about four months before its completion. The reference period of the information collected

is a calendar year, that is January 2013 to December, 2013. However, for some data and other financial information, fiscal year, that is July 2012 to June 2013 was used as a reference period. Data were collected from both public and private sectors operating in Zanzibar through filled questionnaires, emails and personal visit to the source by OCGS staff.

Data for the year 2013 are marked with letter 'p' means that they are still provisional and are subject for an update.

## **ECONOMIC STATISTICS**

### **1.1 National Accounts Estimates**

The Gross Domestic Products (GDP) represents the total market value of goods and services produced in the country for the reference year after deducting the cost of goods and services used in the process of production known as intermediate consumption.

In 2009 Zanzibar GDP estimates, a minor revision was made in some industries such as Public Administration which changed from 0.3 to 3.4 per cent growth. The health sector changed from 5.2 to 3.4 per cent growth. These revisions led to changes in GDP at current prices from 1,342.6 to 1,442.8 billion TZS but the overall growth of GDP remains unchanged.

The constant GDP growth rate is 7.4 per cent in 2013 compared to 7.1 per cent in 2012. The growth rate of the major sectors namely Agriculture, Fishing and Forest, Industry and Services grew up by 3.6 percent, 8.2 percent and 8.6 percent respectively (Table 2.1.5)

The per capita GDP went up from TZS 1,030,000 in the year 2012 to TZS 1,077,000 in the year 2013 equivalent to US Dollar of 656 in 2012 to 667 in 2013.

The National Accounts estimates are presented in detail from table 2.1.1 to 2.1.8

**Table 1.1.1: Summary Statistics, 2009 – 2013**

	<b>2009</b>	<b>2010</b>	<b>2011</b>	<b>2012</b>	<b>2013p</b>
<b>GDP at market prices</b>					
At current prices (Billion shillings)	875.2	942.3	1,191.9	1,342.6	1,442.8
Quantity index (2001=100)	162	172	184	197	211
Constant price growth rates (%)	6.1	6.4	6.6	7.1	7.4
Implied deflators (2001=100)	243	246	291	306	307
<b>GDP per capita</b>					
GDP per capita (Tshs '000)	726	778	956	1,030	1,077
GDP per capita (US \$)	555	558	614	656	667
<b>Memorandum items</b>					
Population ('000)	1,206	1,211	1,247	1,303	1,339
Exchange rate Tshs per US \$	1,307	1,396	1,557	1,572	1,615

Source: Office of the Chief Government Statistician

Note: p = provision

**Table 1.1.2: Gross Domestic Product by Activity 2009 – 2013, (Current Price)**

(Billion Tanzanian Shillings)

	<b>2009</b>	<b>2010</b>	<b>2011</b>	<b>2012</b>	<b>2013p</b>
<b>GDP at market prices</b>	875.2	942.3	1191.9	1342.6	1442.8
<i>Agriculture, forestry &amp; fishing</i>	271.0	306.8	386.2	412.9	447.8
<i>Industry</i>	111.3	115.4	138.1	151.6	159.8
<i>Services</i>	387.1	404.8	526.1	604.3	636.3
<i>Adjustment to market prices</i>	105.9	115.3	141.5	173.9	198.9
<b><i>Agriculture, forestry &amp; fishing</i></b>					
Crops	182.9	201.1	251.0	260.0	284.7
Livestock	39.3	44.1	49.9	51.5	55.3
Forestry & hunting	2.8	3.3	4.4	5.2	3.9
Fishing	46.0	58.3	80.8	96.1	103.9
<b><i>Industry</i></b>					
Mining & quarrying	7.3	8.2	10.5	12.2	13.8
Manufacturing	36.1	39.5	46.4	46.5	46.9
Electricity, gas & water supply	12.3	13.1	17.8	20.4	22.6
Construction	55.6	54.5	63.5	72.5	76.4
<b><i>Services</i></b>					
Trade & repairs	73.1	83.0	115.5	127.3	134.3
Hotels & restaurants	63.1	68.9	87.4	87.5	91.3
Transport & communications	97.8	85.8	110.7	120.7	133.8
Financial intermediation	15.4	19.8	23.5	26.3	28.1
Real estate & business services	7.7	8.6	10.3	11.1	11.4
Public administration	80.0	86.0	105.1	132.2	135.6
Education	35.6	37.3	55.1	74.7	76.7
Health	11.6	12.4	14.6	19.3	19.8
Other social & personal services	2.8	3.1	3.9	5.1	5.3
<b><i>Adjustment to market prices</i></b>					
Taxes on products	105.9	115.3	141.5	173.9	198.9

Source: Office of the Chief Government Statistician

**Table 1.1.3: Gross Domestic Product by Activity 2009 -2013, (Percentage Shares)**

	<b>2009</b>	<b>2010</b>	<b>2011</b>	<b>2012</b>	<b>2013p</b>
<b>GDP at market prices</b>	100.0	100.0	100.0	100.0	100.0
<i>Agriculture, forestry &amp; fishing</i>	31.0	32.6	32.4	30.7	31.0
<i>Industry</i>	12.7	12.2	11.6	11.3	11.1
<i>Services</i>	44.2	43.0	44.1	45.0	44.1
<i>Adjustment to market prices</i>	12.1	12.2	11.9	13.0	13.8
<i>Agriculture, forestry &amp; fishing</i>					
Crops	20.9	21.3	21.1	19.4	19.7
Livestock	4.5	4.7	4.2	3.8	3.8
Forestry & hunting	0.3	0.4	0.4	0.4	0.3
Fishing	5.3	6.2	6.8	7.2	7.2
<i>Industry</i>					
Mining & quarrying	0.8	0.9	0.9	0.9	1.0
Manufacturing	4.1	4.2	3.9	3.5	3.3
Electricity, gas & water supply	1.4	1.4	1.5	1.5	1.6
Construction	6.4	5.8	5.3	5.4	5.3
<i>Services</i>					
Trade & repairs	8.4	8.8	9.7	9.5	9.3
Hotels & restaurants	7.2	7.3	7.3	6.5	6.3
Transport & communications	11.2	9.1	9.3	9.0	9.3
Financial intermediation	1.8	2.1	2.0	2.0	1.9
Real estate & business services	0.9	0.9	0.9	0.8	0.8
Public administration	9.1	9.1	8.8	9.8	9.4
Education	4.1	4.0	4.6	5.6	5.3
Health	1.3	1.3	1.2	1.4	1.4
Other social & personal services	0.3	0.3	0.3	0.4	0.4
<i>Adjustment to market prices</i>					
Taxes on products	12.1	12.2	11.9	13.0	13.8

Source: Office of the Chief Government Statistician

**Table 1.1.4: Gross Domestic Product 2009 – 2013, (Quantity Index)**

	<b>2009</b>	<b>2010</b>	<b>2011</b>	<b>2012</b>	<b>2013p</b>
<b>GDP at market prices</b>	162.0	172.3	183.7	196.8	211.3
Agriculture, forestry & fishing	141.5	146.0	150.0	153.0	158.5
Industry	201.1	204.2	215.1	234.7	254.0
Services	163.6	178.8	194.2	211.1	229.3
Adjustment to market prices	162.0	172.3	183.7	196.8	211.3
Agriculture, forestry & fishing					
Crops	149.5	154.8	155.6	158.2	163.9
Livestock	131.9	136.0	140.2	144.5	149.0
Forestry & hunting	128.7	132.7	141.2	142.9	146.6
Fishing	123.6	125.0	140.0	143.1	149.5
Industry					
Mining & quarrying	274.9	289.1	323.7	377.0	436.2
Manufacturing	136.1	140.3	143.8	144.0	148.6
Electricity, gas & water supply	144.7	144.0	166.9	174.9	181.4
Construction	298.4	299.9	311.5	355.9	393.3
<b>Services</b>					
Trade & repairs	131.3	140.6	170.8	188.2	202.8
Hotels & restaurants	196.1	202.0	222.6	223.0	237.5
Transport & communications	350.2	418.9	458.9	547.2	626.2
Financial intermediation	205.7	255.3	265.5	292.6	317.1
Real estate & business services	144.7	151.7	159.1	166.9	175.1
Public administration	101.6	104.4	104.6	104.9	108.5
Education	146.2	153.3	157.5	159.5	165.1
Health	169.2	173.8	167.5	176.2	182.1
Other social & personal services	140.0	146.1	152.4	158.9	165.7
Adjustment to market prices					
Taxes on products	162.0	172.3	183.7	196.8	211.3

Source: Office of the Chief Government Statistician

**Table 1.1.5: Gross Domestic Product 2009 – 2013, (Constant Price Growth Rates)**

	<b>2009</b>	<b>2010</b>	<b>2011</b>	<b>2012</b>	<b>2013p</b>
<b>GDP at market prices</b>	6.1	6.4	6.6	7.1	7.4
<i>Agriculture, forestry &amp; fishing</i>	4.4	3.1	2.7	2.0	3.6
<i>Industry</i>	0.0	1.6	5.4	9.1	8.2
<i>Services</i>	8.7	9.3	8.6	8.7	8.6
<i>Adjustment to market prices</i>	6.1	6.4	6.6	7.1	7.4
<i>Agriculture, forestry &amp; fishing</i>					
Crops	5.1	3.6	0.5	1.7	3.6
Livestock	3.6	3.1	3.1	3.1	3.1
Forestry & hunting	4.3	3.1	6.4	1.2	2.6
Fishing	2.4	1.2	11.9	2.3	4.4
<i>Industry</i>					
Mining & quarrying	10.5	5.2	12.0	16.5	15.7
Manufacturing	2.4	3.1	2.5	0.1	3.2
Electricity, gas & water supply	2.4	-0.5	15.9	4.7	3.7
Construction	-3.4	0.5	3.9	14.2	10.5
<i>Services</i>					
Trade & repairs	3.9	7.0	21.5	10.2	7.7
Hotels & restaurants	5.0	3.0	10.2	0.2	6.5
Transport & communications	22.1	19.6	9.6	19.2	14.4
Financial intermediation	2.6	24.1	4.0	10.2	8.4
Real estate & business services	4.8	4.9	4.9	4.9	4.9
Public administration	4.0	2.8	0.2	0.3	3.4
Education	5.6	4.8	2.8	1.2	3.5
Health	2.2	2.7	-3.6	5.2	3.4
Other social & personal services	4.3	4.3	4.3	4.3	4.3
<i>Adjustment to market prices</i>					
Taxes on products	6.1	6.4	6.6	7.1	7.4

Source: Office of the Chief Government Statistician

**Table 1.1.6: Gross Domestic Product 2009 – 2013, Implied Deflators (2001=100)**

	<b>2009</b>	<b>2010</b>	<b>2011</b>	<b>2012</b>	<b>2013p</b>
<b>GDP at market prices</b>	242.7	245.6	291.4	306.4	306.6
Agriculture, forestry & fishing	339.0	372.1	455.9	477.8	500.1
Industry	222.1	226.6	257.5	259.1	252.4
Services	221.9	212.4	254.1	268.5	260.2
Adjustment to market prices	188.5	193.1	222.2	254.9	271.4
Agriculture, forestry & fishing					
Crops	340.5	361.3	448.8	457.2	483.3
Livestock	316.0	344.3	378.0	378.0	393.8
Forestry & hunting	203.4	234.9	297.0	343.0	251.1
Fishing	369.9	463.3	573.8	667.5	691.0
Industry					
Mining & quarrying	182.8	193.9	222.0	222.0	217.3
Manufacturing	235.6	249.9	286.1	286.1	280.2
Electricity, gas & water supply	231.6	248.8	290.6	318.9	340.7
Construction	218.2	213.0	238.7	238.7	227.7
Services					
Trade & repairs	234.6	248.9	285.0	285.1	279.2
Hotels & restaurants	241.5	256.2	294.7	294.7	288.6
Transport & communications	201.4	147.6	174.0	159.0	154.1
Financial intermediation	253.9	264.6	301.3	306.3	301.4
Real estate & business services	235.3	249.3	286.9	293.3	287.7
Public administration	231.4	242.0	295.3	370.3	367.4
Education	192.5	192.1	276.3	370.3	367.4
Health	231.4	242.0	295.3	370.3	367.4
Other social & personal services	231.4	242.0	295.3	370.3	367.4
Adjustment to market prices					
Taxes on products	188.5	193.1	222.2	254.9	271.4

Source: Office of the Chief Government Statistician

**Table 1.1.7: Gross Domestic Product (GDP), 2009 – 2013, Constant 2001 Prices**

(Billion Tanzanian Shillings)

	<b>2009</b>	<b>2010</b>	<b>2011</b>	<b>2012</b>	<b>2013p</b>
<b>GDP at market prices</b>	360.7	383.7	409.1	438.3	470.6
Agriculture, forestry & fishing	80.0	82.4	84.7	86.4	89.5
Industry	50.1	50.9	53.6	58.5	63.3
Services	174.5	190.6	207.0	225.1	244.5
Adjustment to market prices	56.2	59.7	63.7	68.2	73.3
Agriculture, forestry & fishing					
Crops	53.7	55.6	55.9	56.9	58.9
Livestock	12.4	12.8	13.2	13.6	14.0
Forestry & hunting	1.4	1.4	1.5	1.5	1.6
Fishing	12.4	12.6	14.1	14.4	15.0
Industry					
Mining & quarrying	4.0	4.2	4.7	5.5	6.4
Manufacturing	15.3	15.8	16.2	16.2	16.8
Electricity, gas & water supply	5.3	5.3	6.1	6.4	6.6
Construction	25.5	25.6	26.6	30.4	33.6
Services					
Trade & repairs	31.2	33.3	40.5	44.7	48.1
Hotels & restaurants	26.1	26.9	29.6	29.7	31.6
Transport & communications	48.6	58.1	63.6	75.9	86.8
Financial intermediation	6.0	7.5	7.8	8.6	9.3
Real estate & business services	3.3	3.4	3.6	3.8	4.0
Public administration	34.6	35.5	35.6	35.7	36.9
Education	18.5	19.4	19.9	20.2	20.9
Health	5.0	5.1	4.9	5.2	5.4
Other social & personal services	1.2	1.3	1.3	1.4	1.4
Adjustment to market prices					
Taxes on products	56.2	59.7	63.7	68.2	73.3

Source: Office of the Chief Government Statistician

**Table 1.1.8: Capital Formation by Type of Asset, 2009 – 2013,****(Million Tanzanian Shillings)**

<b>YEAR</b>	<b>2009</b>	<b>2010</b>	<b>2011</b>	<b>2012</b>	<b>2013p</b>
<b>A. Buildings</b>					
Residential	9,748	9,624	11,294	12,511	12,934
Rural Construction	8,244	8,087	9,415	10,756	11,336
Non Residential	30,611	30,220	35,465	39,286	40,613
<b>Total Buildings</b>	<b>48,603</b>	<b>47,931</b>	<b>56,174</b>	<b>62,553</b>	<b>64,883</b>
<b>B. Other Works</b>					
Land Improvements	30,785	30,392	35,666	39,510	40,844
Roads, Bridges etc.	23,791	23,487	27,563	30,533	31,564
<b>Total Others Works</b>	<b>54,576</b>	<b>53,879</b>	<b>63,229</b>	<b>70,043</b>	<b>72,408</b>
<b>C. Equipment</b>					
Transport Equipment	37,962	38,464	53,103	57,711	50,077
Other Equipment	23,406	35,220	31,202	71,211	37,837
<b>Total Equipment</b>	<b>61,368</b>	<b>73,684</b>	<b>84,305</b>	<b>128,922</b>	<b>87,914</b>
<b>D. Others</b>					
<b>Change inventory</b>	<b>2,768</b>	<b>2,930</b>	<b>24,190</b>	<b>-2,923</b>	<b>8,687</b>
<b>E. Capital Formation</b>	<b>167,315</b>	<b>178,424</b>	<b>227,898</b>	<b>258,595</b>	<b>233,891</b>
<b>F. Of Which</b>					
Subsistence	8,244	8,087	9,415	10,756	11,336
Monetary	159,071	170,337	218,483	247,839	222,555
<b>Capital Formation</b>	<b>167,315</b>	<b>178,424</b>	<b>227,898</b>	<b>258,595</b>	<b>233,891</b>

Source: Office of the Chief Government Statistician

## **1.2 Government Finance**

The Revolutionary Government of Zanzibar has two main sources of domestic revenues collections. These are tax revenues and non-tax revenues and they are collected through Tanzania Revenue Authority (TRA) and Zanzibar Revenue Board (ZRB).

### **1.2.1 Revenues**

Government finance statistics shows that in 2012/13 the total domestic revenue collection reached Tanzania shillings 266.0 billion compared to Tanzania shillings 225.0 billion in 2011/12 recording an increase of 18 per cent. This growth is higher as compared to growth of 13.0 percent observed in the reference period between 2011/12 and 2010/11 as illustrated in table 1.2.1.1 Among the domestic revenue collection, 87.68 percent amounting to Tanzania shillings 233.3 billion were collected through taxes while the remaining 12.31 percent which is Tanzania shillings 32.7 billion are non-tax revenues.

Collection of Zanzibar revenue board (ZRB) for 2012/13 increased to Tanzania shillings 141.7 billion from Tanzania shillings 128.3 billion in 2011/12. The growth increased by a slightly increasing rate as compared to the growth of 2011/12 where the growth is 10.4 percent and 10.0 percent respectively. The revenues collected by Tanzanian revenue authority (TRA) reached Tanzanian shillings 103.5 billion compared of Tanzania Shillings 96.7 billion in 2011/12. The higher collection (Value) from ZRB in 2012/13 is due to increasing of customer revenues and domestic revenues by 65 percent and 41 percent respectively

### **1.2.2 Expenditures**

During 2012/13, actual expenditure amounted to Tanzania shilling 351,233.41 million, out of that amounted, recurrent expenditure was Tanzania shillings 223,010.91 million and development expenditure Tanzania shillings 133,951.88 million. Expenditure trend was in line with the resources during that period. Compared to 2011/12, both the Government expenditure, recurrent expenditure and development expenditure decreased by 8.7 percent, 5.3 percent and 10.2 percent respectively.

Payment for salary and wages for Government employees amounted to Tanzania shillings 109,634.67 million. This reflects decrease of 7.6 percent from Tanzania shillings 118,592.88 million in 2011/12

**Table 1.2.1.1: Government Domestic Revenue Collections, 2008/09 – 2012/13**

(Million Tanzanian Shillings)

Description	2008/09	2009/10	2010/11	2011/2012	2012/2013
<b>Domestic Revenue</b>	<b>135,951.50</b>	<b>142,632.80</b>	<b>199,730.87</b>	<b>225,046.77</b>	<b>266,161.33</b>
Annual Percentage Changes	22.9	4.9	40.0	13.0	18.27
<b>Tax Revenue</b>	<b>126,156.70</b>	<b>135,431.30</b>	<b>184,471.37</b>	<b>205,318.22</b>	<b>233,379.36</b>
<b>Non-Tax Revenue</b>	<b>9,794.80</b>	<b>7,201.50</b>	<b>15,259.50</b>	<b>19,728.55</b>	<b>32,781.97</b>
<b>Revenue From TRA</b>					
Total Revenue	<b>50,855.80</b>	<b>56,152.00</b>	<b>83,275.66</b>	<b>96,696.44</b>	<b>103,453.14</b>
Annual Percentage Changes	27.6	10.4	48.0	16.0	6.99
Import Duty	13,982.20	14,548.90	22,180.00	24,783.27	24,859.12
VAT Import	13,159.50	13,631.80	21,144.45	26,961.60	25,151.11
Excise Duty Import	1,715.60	1,915.60	3,230.65	4,604.94	4,471.08
Excise Duty Petrol	2,733.80	3,260.70	3,532.71	4,076.02	5,582.46
Trade Levy	1,871.50	2,050.90	3,186.31	3,669.10	3,659.96
Suspended Duty	0	0	0	0	0.00
Fine on import	3.8	8.6	8.04	21.72	22.21
Export duty	0	0	0	0	0.00
Auction sales	20.2	0	0	0	0.00
Customs W/rent	0.2	0	0	0	0.00
Customs Agency fee	0	0	0	0	0.00
With Holding Tax	0	0.5	0	0	0.00
Miscellaneous Custom Fee	308.8	9.7	9.88	10.46	7.09
<b>Customs Revenues</b>	<b>33,795.60</b>	<b>35,426.70</b>	<b>53,292.04</b>	<b>64,127.10</b>	<b>63,753.02</b>
<b>Domestic Revenue Department</b>					
Individual Tax	1,795.60	1,899.00	2,506.82	2,896.51	3,423.72
Private Company Ltd	4,474.40	5,440.90	5,598.36	6,613.18	7,733.63
Government Parastatal	0	0	0	0	0.00
Withholding Tax-IRMD	1,859.40	1,557.10	2,330.99	2,428.17	3,039.14
PAYE	8,930.90	11,828.20	5,784.16	17,592.39	21,794.09
Transfer PAYE	0	0	2,403.96	0	268.45
Skill Development Levy	0	0	15,801.52	3,039.08	3,441.09
<b>Domestic Revenues</b>	<b>17,060.20</b>	<b>20,725.20</b>	<b>44,425.80</b>	<b>32,569.33</b>	<b>39,700.11</b>

Source: President Office, Finance, Economy and Development Planning

**Table 1.2.1.2: Government Domestic Revenue Collections, 2008/09 – 2012/13. cont'd**

(Million Tanzanian Shillings)

<b>Description</b>	<b>2008/09</b>	<b>2009/10</b>	<b>2010/11</b>	<b>2011/2012</b>	<b>2012/2013</b>
<b>ZRB Collection</b>					
Total Revenue	<b>85,095.70</b>	<b>86,480.80</b>	<b>116,455.21</b>	<b>128,350.34</b>	141,708.19
Annual Percentage Changes	20.2	1.6	35.0	10.0	10.41
<b>Tax Revenues</b>					
VAT Local	39,281.20	35,122.00	44,346.02	49,270.50	56,451.47
Excise Duty Local	6,044.50	7,906.50	9,563.09	9,724.87	11,417.24
Hotel Levy	1,783.10	1,993.70	4,673.19	4,980.07	6,511.63
Restaurant Levy	906.3	889.4	1,775.06	2,077.10	2,185.63
Tour Operation Levy	424.5	409.7	628.02	674.91	706.71
Revenue Stamp	1,110.90	1,201.40	1,219.89	1,302.21	2,461.50
Airport Service Charge	5,830.30	5,925.70	8,637.09	8,556.87	12,169.70
Seaport Service Charge	843.3	980.7	1,580.14	1,663.35	2,318.12
Road Development Fund	3,994.70	5,468.40	5,259.67	5,568.93	6,024.05
Petroleum Levy	14,763.60	19,003.60	18,995.42	20,042.57	23,797.52
Car Registration Fees	0	0	720.49	742.28	755.36
Motor Vehicle License Fee	318.5	378.2	815.11	854.83	1,942.62
Sustainable Tourism Levy	0	0	0	0	0.00
Driving License Fees	0	0	488.61	505.47	551.63
Airport Safety Fee	0	0	2,493.91	2,657.83	2,633.03
<b>Total</b>	<b>75,300.90</b>	<b>79,279.30</b>	<b>101,195.71</b>	<b>108,621.79</b>	<b>129,926.22</b>
<b>Non-Tax Revenue</b>					
Dividend From BOT	847.8	0	0	7,796.00	0.00
Ministries collection	8,947.00	7,201.50	15,259.50	11,932.55	11,781.97
<b>Total</b>	<b>9,794.80</b>	<b>7,201.50</b>	<b>15,259.50</b>	<b>19,728.55</b>	<b>11,781.97</b>
Annual Percentage Changes	30.6	-26.5	112.0	29.0	-40.28

Source: President Office, Finance, Economy and Development Planning

**Table 1.2.2.1: Total Government Expenditure, 2008/09 – 2012/13**

(Million Tanzanian Shillings)

Description	2008/09	2009/10	2010/11	2011/12	2012/13
<b>TOTAL EXPENDITURE</b>	<b>232,127.20</b>	<b>325,045.00</b>	<b>387,130.47</b>	<b>384,768.63</b>	<b>351,233.41</b>
Annual Percentage Changes	29.5	40.0	6.1	-1.0	-8.72
<b>Recurrent Expenditure</b>					
Total Revenue Expenditure	<b>79,865.90</b>	<b>107,050.70</b>	<b>246,431.63</b>	<b>235,605.47</b>	<b>223,010.91</b>
Annual Percentage Changes	19.5	34.0	130.0	-4.0	-5.35
Salaries and Wages	63,803.50	72,558.90	96,103.28	118,592.88	109,634.67
Transfers	16,062.40	34,491.80	27,712.24	31,728.50	32,648.52
CFS	83,461.80	72,364.90	81,657.93	85,284.10	33,201.23
Domestic interest	2,095.30	0	0	0	0.00
CFS others	16,819.20	34,313.60	37,374.19	26,573.95	2,684.00
Special Contingency Fund	0	0	0	0	0.00
Other Charges	64,547.30	38,051.30	57,197.82	77,770.11	71,992.84
<b>Development Expenditure</b>					
Total Development Expenditure	<b>68,799.50</b>	<b>145,629.40</b>	<b>140,698.84</b>	<b>149,163.15</b>	<b>133,951.88</b>
Annual Percentage Changes	-6.9	111.7	-3.0	6.0	-10.2
Local	21,676.80	35,383.70	34,555.09	34,467.69	28,877.58
Foreign	47,122.70	110,245.70	106,143.75	114,695.46	105,074.30
Deficit before Grant/Subv.	84,368.40	125,558.60	0	0	0.00
Grant (URT 4.5 Budget Support )	46,754.90	107,136.30	36,482.80	82,450.72	0.00
Program	0	0	0	0	0.00
o/w 4.5 of budget support / cash	23,543.00	39,520.00	8,945.17	31,134.00	22,135.00
Debt Relief (MDRI )	0	0	0	0	0.00
Project	23,211.90	67,616.30	34,483.82	51,316.72	58,779.53
Deficit After Grant/Subvention	38,248.50	0	0	0	0.00
Adjustment to cash					0.00
Overall balance	38,248.50	0	0	0	0.00
Financing	14,487.70	0	0	0	0.00
Foreign (loans)	23,760.80	42,629.30	68,932.52	63,378.72	49,964.11
Domestic (Net)	-150	0	0	0	0.00
Bank Borrowing	0	0	0	0	0.00
Domestic Non-Bank Borrowing (TB)	0	0	0	0	0.00
Include Cash brought-forward	0	0	0	0	0.00
Domestic Amortization	150	0	0	0	0.00

Source: President Office, Finance, Economy and Development Planning

## **2.0 Real Statistics**

Real statistics comprised of statistics from economic sector specifically it involves the collection of data and information pertaining to prices of commodities and taxes charged on imported goods and other services, tourism, trade, transport and communication sectors.

### **2.1 Consumer Price Index**

The Consumer Price Index (CPI) measures the average percentage changes between two time periods (base period and current period) in the prices of a market basket of consumer goods and services acquired by households.

Consumer Price Index is a very important indicator that guides decision-makers on national developments and in particular it provides a yardstick for resource allocation in the society.

In addition Consumer Price index has the following uses:

- To formulate fiscal and monetary policies
- To adjust consumer's income payments
- As a deflator in National Account estimates
- As indicators of purchasing power of money
- To adjust currency values.

The 2009/10 HBS adjusted non- institutional expenditure shown that 51.6 of households' budget were spent on food consumed at home and restaurants. The main non - food items in the market basket were household's utilities (17.1 per cent), clothing (9.3 per cent) and transport (6.3 per cent). The overall total household expenditure for non-food items is 48.4 per cent where education and health have 1.3 per cent and 2.8 per cent respectively.

The headline Inflation rate measures Inflation rates when all items in the fixed basket are included. The Annual Consumer Price Index (CPI) is categorised into twelve divisions and its weights is based on Classification of Individual Consumption According by Purpose (COICOP). The CPI movement of overall index increased from 98.5 reported in 2012 to 103.4 in 2013. Food index was 97.7 in 2012 and 99.5 in 2013, while non-food index was 99.3 reported in 2012 and 107.8 in 2013. Movement of the overall inflation rate in Zanzibar for the last two years has shown to be fluctuating (Table 3.1.2). For example, in 2013 inflation was 5.0 per cent and 9.4 per cent in 2012.

The result implies that the average prices of goods and services during the period under review (2013) were lower compared to prices reported in 2012 where annual food inflation rate average was 1.8 percent and average annual non-food inflation rate was 8.5 per cent in 2013. The imported food and non food products such as such Rice, Sugar, Wheat Flour Cement and Fuel (Kerosene and Petrol) are significantly to the inflation rate of 5.0 percent

**Table 2.1.1: Zanzibar Consumer Price Index, 2009– 2013**

Description	Weight	(Base Dec 2005 = 100)			Weight	(Base Aug 2012 = 100)	
		2009	2010	2011		2012	2013
Food and Non-Alcoholic Beverages	57.4	169.3	179.8	213.7	49.5	97.7	99.2
Alcohol Beverages, Tobacco and Narcotics	0.6	159.5	199.9	223.6	0.3	96.0	107.3
Clothing and Footwear	6.2	126.3	133.3	150.5	9.3	97.5	110.1
Housing, Water, Electricity, Gas, and Other Fuels	15.6	155.9	162.9	177.8	17.1	100.5	107.1
Furnishing, Household Equipment and Routine Household Maintenance	5.3	141.1	146.2	163.3	4.6	98.0	104.1
Health	2.1	151.4	169.8	203.8	2.8	97.3	102.8
Transport	3.4	149.5	155.9	176.3	6.3	101.3	104.5
Communication	2.4	93.9	94.0	95.4	2.6	99.8	118.3
Recreation and Culture	0.4	136.5	144.2	156.0	0.8	98.7	110.1
Education	1.1	127.3	143.8	151.7	1.3	100.3	116.0
Restaurants and Hotels	3.1	188.7	218.8	244.4	2.1	98.6	100.1
Miscellaneous Goods and Services	2.4	133.1	138.2	126.2	3.2	99.3	113.0
<b>Food</b>	<b>57.4</b>	<b>169.3</b>	<b>179.8</b>	<b>213.7</b>	<b>51.6</b>	<b>97.7</b>	<b>99.5</b>
<b>Non - Food</b>	<b>42.6</b>	<b>143.7</b>	<b>152.6</b>	<b>167.8</b>	<b>48.4</b>	<b>99.3</b>	<b>107.8</b>
<b>All Items</b>	<b>100.0</b>	<b>158.1</b>	<b>167.7</b>	<b>192.4</b>	<b>100.0</b>	<b>98.5</b>	<b>103.4</b>

Source: Office of the Chief Government Statistician

**Table 2.1.2: Zanzibar Annual Inflation Rate, 2009 – 2013**

Description	2009	2010	2011	2012	2013
Food	9.6	6.2	18.8	6.7	1.8
Non - Food	6.1	6.2	9.9	13.2	8.5
<b>All Items</b>	<b>8.9</b>	<b>6.1</b>	<b>14.7</b>	<b>9.4</b>	<b>5.0</b>

Source: Office of the Chief Government Statistician

**Table 2.1.3: Monthly Inflation Rate for 2013**

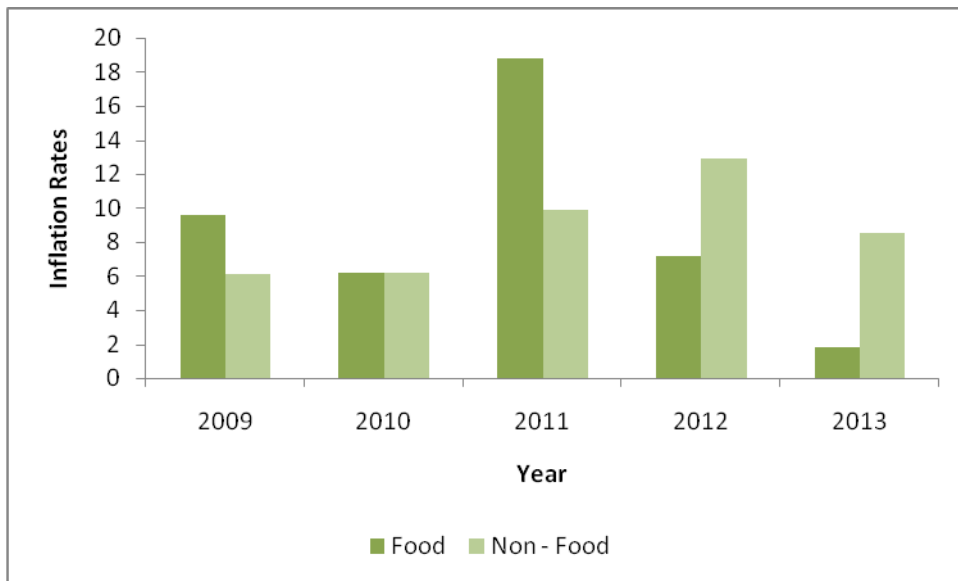
<b>Description</b>	<b>Weight</b>	<b>Jan</b>	<b>Feb</b>	<b>Mar</b>	<b>Apr</b>	<b>May</b>	<b>Jun</b>	<b>Jul</b>	<b>Aug</b>	<b>Sep</b>	<b>Oct</b>	<b>Nov</b>	<b>Dec</b>
Food	<b>51.6</b>	-3.6	-2.7	1.2	2.3	2.8	3.4	6.6	1.1	1.9	3.0	3.5	-0.5
Non-Food	<b>48.4</b>	8.9	9.0	5.7	6.1	7.8	6.5	7.1	10.8	10.3	9.2	8.9	8.8
All Items	<b>100.0</b>	1.8	2.4	2.7	3.9	5.4	5.1	7.0	5.2	5.3	5.8	6.0	3.8

Source: Office of the Chief Government Statistician

**Table 2.1.4: Zanzibar Consumer Price Index, 2013**

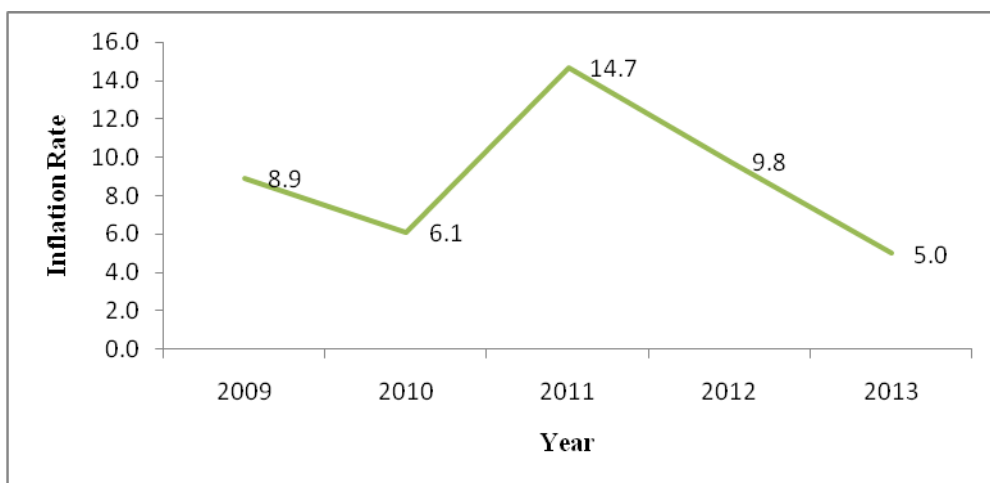
Description	Weight	2013											
		Jan	Feb	Mar	Apr	May	Jun	Jul	Aug	Sep	Oct	Nov	Dec
Food And Non-Alcoholic Beverages	<b>49.5</b>	98.5	98.4	98.9	101.3	99.2	98.1	103.9	100.5	97.7	99.0	99.1	96.4
Alcohol Beverages, Tobacco And Narcotics	<b>0.3</b>	103.8	103.7	106.3	106.3	106.3	106.3	109.0	109.6	108.9	108.9	108.9	109.2
Clothing And Footwear	<b>9.3</b>	103.7	106.3	107.5	107.7	108.1	108.5	112.5	113.0	113.1	113.4	113.9	114.2
Housing, Water, Electricity, Gas, And Other Fuels	<b>17.1</b>	101.7	104.8	104.9	106.3	106.4	105.6	105.9	108.2	108.7	110.8	111.1	111.4
Furnishing, Household Equipment And Routine Household Maintenance	<b>4.6</b>	102.9	103.3	103.6	103.7	103.7	104.3	104.5	104.5	104.5	104.5	104.5	104.7
Health	<b>2.8</b>	103.1	102.4	102.4	102.4	102.4	102.4	102.4	103.1	103.1	103.1	103.1	103.8
Transport	<b>6.3</b>	104.8	102.7	102.6	105.6	105.7	103.0	103.7	104.0	105.2	105.1	106.5	105.1
Communication	<b>2.6</b>	99.4	99.4	99.4	99.4	99.4	99.4	99.8	150.7	150.7	150.7	151.2	151.2
Recreation And Culture	<b>0.8</b>	108.3	109.5	109.9	109.9	110.5	110.5	110.5	110.5	110.5	110.5	110.5	110.5
Education	<b>1.3</b>	112.4	112.4	112.4	113.6	116.5	116.5	116.5	118.4	118.4	118.4	118.4	118.4
Restaurants And Hotels	<b>2.1</b>	102.5	101.9	99.4	99.2	99.5	99.2	99.1	99.9	99.9	100.3	100.0	100.1
Miscellaneous Goods And Services	<b>3.2</b>	109.7	109.8	110.2	110.6	112.7	112.9	113.2	113.3	115.4	115.4	115.5	117.8
<b>Food</b>	<b>51.6</b>	<b>98.5</b>	<b>98.4</b>	<b>98.9</b>	<b>101.3</b>	<b>99.2</b>	<b>98.1</b>	<b>104.3</b>	<b>101.1</b>	<b>98.4</b>	<b>99.6</b>	<b>99.7</b>	<b>97.1</b>
<b>Non - Food</b>	<b>48.4</b>	<b>103.5</b>	<b>104.7</b>	<b>104.9</b>	<b>105.9</b>	<b>106.2</b>	<b>105.8</b>	<b>107.0</b>	<b>110.4</b>	<b>110.95</b>	<b>111.0</b>	<b>111.5</b>	<b>111.7</b>
<b>All Items</b>	<b>100.0</b>	<b>101.0</b>	<b>101.5</b>	<b>101.9</b>	<b>103.6</b>	<b>102.7</b>	<b>101.8</b>	<b>105.3</b>	<b>105.2</b>	<b>104.0</b>	<b>105.0</b>	<b>105.2</b>	<b>103.9</b>

Source: Office of the Chief Government Statistician



Source: Office of the Chief Government Statistician

**Figure 2.1.1: Food and Non-Food, 2009 - 2013**



Source: Office of the Chief Government Statistician

**Figure 2.1.2: Annual Inflation rates, 2009 - 2013**



Source: Office of the Chief Government Statistician

**Figure 2.1.3: Monthly Inflation Rates, 2013**

### **3.1 Tourism Statistics**

The World Tourism Organisation defines **tourists** as people travelling to and staying in places outside their usual environment for not more than one consecutive year for leisure, business and other purposes. The tourism sector has a potential to generate high employment growth through a mix of activities of hotels, transport, shopping, food, entertainment and other areas. It is the hospitality sector, which binds together a lot of other employment generating sectors through backward and forward linkages.

The statistics of tourism in this report is based on number of tourists arrived and number of hotels, rooms and beds available from 2009 to 2013.

**Table 3.1.1: Monthly Record of Visitor Arrivals in Zanzibar by Country, 2013**

Country of residence	2013												Total
	Jan	Feb	Mar	Apr	May	Jun	Jul	Aug	Sep	Oct	Nov	Dec	
EUROPE													
Scandinavia	1,065	1,169	1,202	342	324	843	937	483	478	706	853	1,654	10,056
United Kingdom	925	794	738	620	618	1,251	1,741	1,987	1,606	1,407	751	1,325	13,763
German	1,135	1,224	1,080	671	793	1,444	1,459	1,618	1,530	1,497	1,234	1,206	14,891
Italy	8,870	7,072	4,572	331	192	357	2,849	5,878	3,669	4,918	5,361	6,897	50,966
France	2,204	2,039	1,389	341	424	616	837	1,014	731	952	947	1,048	12,542
Dutch	510	376	210	154	163	318	503	526	519	492	448	460	4,679
Belgium	529	501	354	156	75	178	281	233	278	549	531	531	4,196
Russia	227	121	172	39	85	59	110	110	119	159	92	118	1,411
Turkey	223	98	101	57	81	233	114	74	53	161	49	138	1,382
Spain	168	139	67	90	44	220	300	371	301	163	125	166	2,154
Other European Country	1,662	1,415	1,129	590	405	869	1,000	1,055	927	1,421	1,053	1,521	13,047
Subtotal	17,518	14,948	11,014	3,391	3,204	6,388	10,131	13,349	10,211	12,425	11,444	15,064	129,087
ASIA													
Japan	153	118	93	51	74	78	117	125	142	98	63	115	1227
China	142	165	153	126	100	173	168	236	151	135	127	251	1927
Other Asia	669	576	824	705	836	1,354	870	1,277	907	749	1,038	997	10802
Subtotal	9,64	8,59	1,070	882	1,010	1,605	1,155	1,638	1,200	982	1,228	1,363	13,956
AFRICA													
Kenya	506	423	506	472	507	559	546	639	411	482	584	1,614	7249
South Africa	309	178	1,069	746	494	836	695	636	982	925	964	2,286	10,120
Other Africa	365	472	291	410	353	489	445	404	252	294	371	615	4761
Subtotal	1,180	1,073	1,866	1,628	1,354	1,884	1,686	1,679	1,645	1,701	1,919	4,515	22,130
AMERICA													
United states& Canada	672	639	849	692	672	788	946	875	716	854	722	1,589	10,014
Other American Country	260	155	212	123	102	122	122	100	150	114	76	158	1,694
Subtotal	932	794	1,061	815	774	910	1,068	975	866	968	798	1,747	11,708
OCEANIA													
Australia/New Zealand	311	343	343	164	167	385	474	477	588	434	225	509	4420
Subtotal	311	343	343	164	167	385	474	477	588	434	225	509	4420
All Countries(2013)	20,905	18,017	15,354	6,880	6,509	11,172	14,514	18,118	14,510	16,510	15,614	23,198	181,301
All Countries(2012)	18,988	18,354	13,680	7,612	5,859	10,483	14,752	19,380	13,439	15,590	12,889	18,197	169,223

Source: Zanzibar Commission for Tourism

**Table 3.1.2: Monthly Records of Tourist Arrivals by Country of Residence through Airport, 2013**

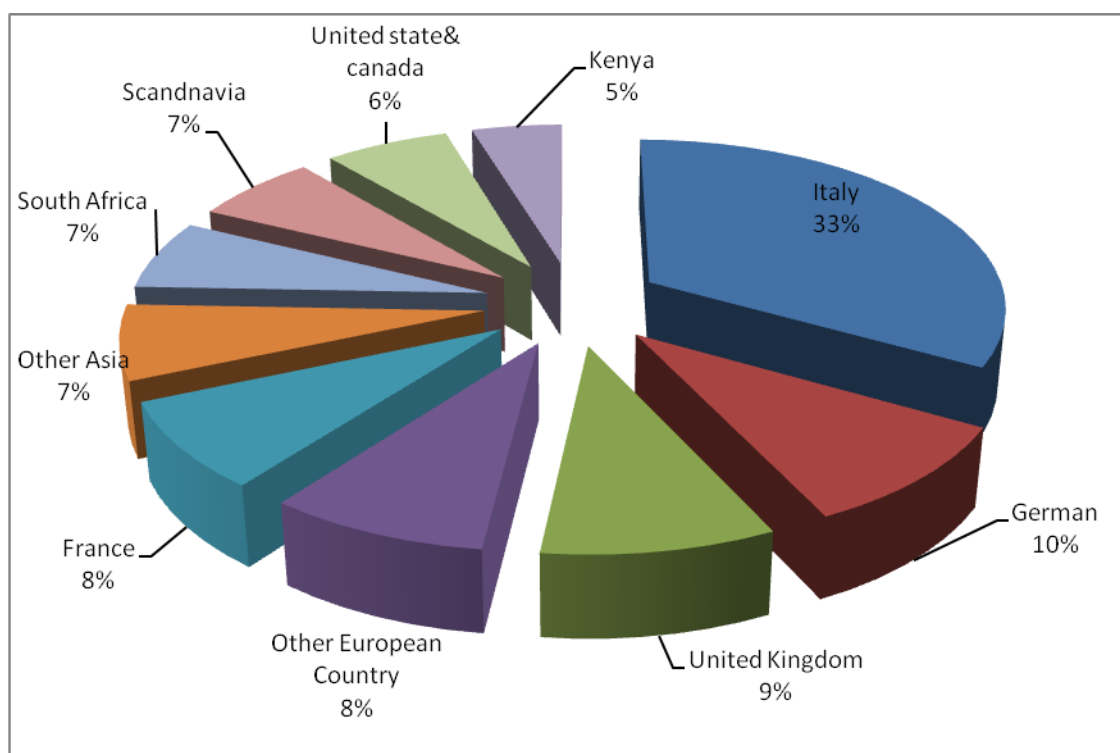
Country of residence	2013												Total
	Jan	Feb	Mar	Apr	May	Jun	Jul	Aug	Sep	Oct	Nov	Dec	
EUROPE													
Scandinavia	579	931	680	127	133	528	711	295	298	561	442	1,005	6,290
United Kingdom	516	564	500	379	330	878	1,253	1,259	956	917	485	958	8,995
German	766	937	758	467	575	1,059	903	958	1,099	1,146	959	701	10,328
Italy	8,645	6,993	4,448	290	108	225	2,708	5,778	3,590	4,863	5,273	6,612	49,533
France	1,936	1,901	1,267	264	327	450	683	799	540	789	767	846	10,569
Dutch	246	243	78	43	47	109	394	292	282	243	321	278	2,576
Belgium	426	442	308	130	33	132	220	147	177	450	460	455	3,380
Russia	90	58	68	18	62	17	43	70	88	132	65	65	776
Turkey	8	21	5	10	9	15	10	24	15	92	8	19	236
Spain	49	66	67	42	44	143	236	371	301	163	70	78	1,630
Other European Country	1,232	1,085	772	317	169	405	667	567	513	818	816	1,118	8,479
Subtotal	14493	13,241	8,951	2,087	1,837	3,961	7828	10,560	7,859	10,174	9,666	12,135	102,792
ASIA													
Japan	26	26	19	15	20	17	23	46	58	28	22	44	344
China	31	44	74	35	23	63	63	125	53	51	42	102	706
Other Asia	476	446	553	560	616	1,213	547	1,089	723	581	818	614	8,236
Subtotal	533	516	646	610	659	1,293	633	1,260	834	660	882	760	9,286
AFRICA													
Kenya	328	305	463	359	325	449	429	556	335	427	404	1,113	5,493
South Africa	107	70	951	559	387	729	591	511	911	843	837	1,985	8,481
Other Africa	137	332	162	293	183	331	219	318	175	235	195	294	2,874
Subtotal	572	707	1,576	1,211	895	1,509	1,239	1,385	1,421	1,505	1,436	3,392	16,848
AMERICA													
United states& Canada	365	328	400	214	327	445	548	560	356	504	337	547	4,931
Other American Country	37	40	110	20	26	32	53	31	76	51	43	65	584
Subtotal	402	368	510	234	353	477	601	591	432	555	380	612	5515
OCEANIA													
Australia/New Zealand	150	99	66	60	58	122	180	200	306	212	79	131	1663
Subtotal	150	99	66	60	58	122	180	200	306	212	79	131	1663
All Countries (2013)	16,150	14,931	11,749	4,202	3,802	7,362	10,481	13,996	10,852	13,106	12,443	17,030	13,6104
All Countries (2012)	15,123	14,555	10,485	4,905	3,182	6,397	9,641	14,025	9,406	11,780	9,803	14,760	12,4062

Source: Zanzibar Commission for Tourism

**Table 3.1.3: Monthly Records of Tourist Arrivals by Country of Residence through Seaport, 2013**

Country of residence	2013												Total
	Jan	Feb	Mar	Apr	May	Jun	Jul	Aug	Sep	Oct	Nov	Dec	
EUROPE													
Scandinavia	486	238	522	215	191	315	226	188	180	145	411	649	3766
United Kingdom	409	230	238	241	288	373	488	728	650	490	266	367	4768
German	369	287	322	204	218	385	556	660	431	351	275	505	4563
Italy	225	79	124	41	84	132	141	100	79	55	88	285	1433
France	268	138	122	77	97	166	154	215	191	163	180	202	1973
Dutch	264	133	132	111	116	209	109	234	237	249	127	182	2103
Belgium	103	59	46	26	42	46	61	86	101	99	71	76	816
Russia	137	63	104	21	23	42	67	40	31	27	27	53	635
Turkey	215	77	96	47	72	218	104	50	38	69	41	119	1146
Spain	119	73	0	48	0	77	64	0	0	0	55	88	524
Other European Country	430	330	357	273	236	464	333	488	414	603	237	403	4568
Subtotal	3,025	1,707	2,063	1,304	1,367	2,427	2,303	2,789	2,352	2,251	1,778	2,929	26,295
ASIA													
Japan	127	92	74	36	54	61	94	79	84	70	41	71	883
China	111	121	79	91	77	110	105	111	98	84	85	149	1221
Other Asia	193	130	271	145	220	141	323	188	184	168	220	383	2566
Subtotal	431	343	424	272	351	312	522	378	366	322	346	603	4670
AFRICA													
Kenya	178	118	43	113	182	110	117	83	76	55	180	501	1756
South Africa	202	108	118	187	107	107	104	125	71	82	127	301	1639
Other Africa	228	140	129	117	170	158	226	86	77	59	176	321	1887
Subtotal	608	366	290	417	459	375	447	294	224	196	483	1,123	5,282
AMERICA													
United states& Canada	307	311	449	478	345	343	398	315	360	350	385	1042	5083
Other American Country	223	115	102	103	76	90	69	69	74	63	33	93	1110
Subtotal	530	426	551	581	421	433	467	384	434	413	418	1,135	6,193
OCEANIA													
Australia/New Zealand	161	244	277	104	109	263	294	277	282	222	146	378	2757
Subtotal	161	244	277	104	109	263	294	277	282	222	146	378	2757
All Countries (2013)	4,755	3,086	3,605	2,678	2,707	3,810	4,033	4,122	3,658	3,404	3,171	6,168	45,197
All Countries (2012)	3,865	3,799	3,195	2,707	2,677	4,086	5,111	5,355	4,033	3,810	3,086	3,437	45,161

Source: Zanzibar Commission for Tourism



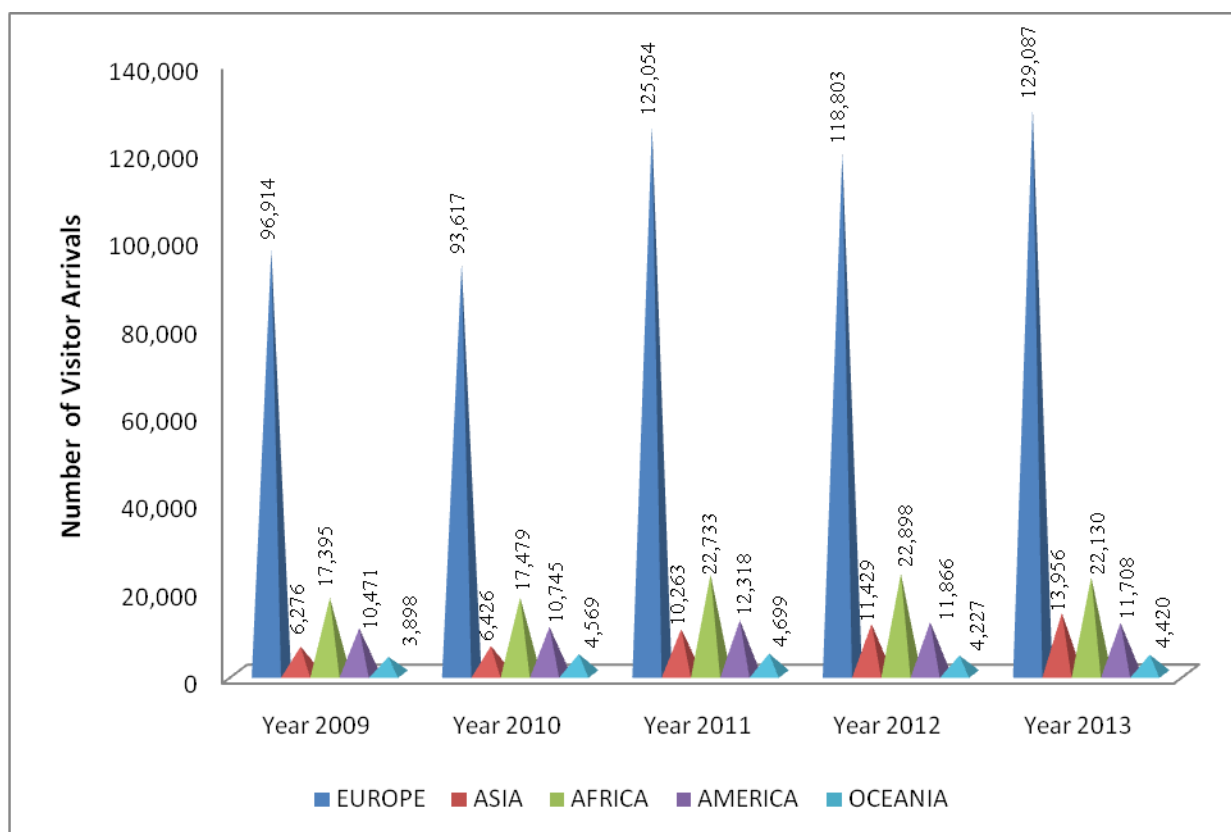
Source: Office of the Chief Government Statistician

**Figure 3.1.1: Tourist Arrival from Top ten Country, 2013**

**Table 3.1.4 Tourist Arrival by month, 2009 – 2013**

Month	2009	2010	2011	2012	2013
January	13,226	12,315	18,334	18,988	20,905
February	14,884	11,883	17,405	18,354	18,017
March	10,577	8,767	13,272	13,680	15,354
<u>1st Quarter</u>	<b>38,687</b>	<b>32,965</b>	<b>49,011</b>	<b>51,022</b>	<b>54,276</b>
April	5,804	4,787	7,188	7,612	6,880
May	3,657	4,452	5,173	5,859	6,509
June	6,514	7,272	8,118	10,483	11,172
<u>2nd Quarter</u>	<b>15,975</b>	<b>16,511</b>	<b>20,479</b>	<b>23,954</b>	<b>24,561</b>
July	14,135	13,422	18,861	14,752	14,514
August	16,592	16,357	22,470	19,380	18,118
September	12,322	12,071	16,072	13,439	14,510
<u>3rd Quarter</u>	<b>43,049</b>	<b>41,850</b>	<b>57,403</b>	<b>47,571</b>	<b>47,142</b>
October	11,653	11,365	13,592	15,590	16,510
November	10,513	11,507	13,911	12,889	15,614
December	15,077	18,638	20,671	18,197	23,198
<u>4th Quarter</u>	<b>37,243</b>	<b>41,510</b>	<b>48,174</b>	<b>46,676</b>	<b>55,322</b>
<b>Whole Year</b>	<b>134,954</b>	<b>132,836</b>	<b>175,067</b>	<b>169,223</b>	<b>181,301</b>

Source: Zanzibar Commission for Tourism



Source: Zanzibar Commission for Tourism

**Figure 3.1.2: Tourist Arrivals by Region, 2009 – 2013**

**Table 3.1.5: Annual Record of Tourist Arrivals in Zanzibar by Country of Residence  
2009- 2013**

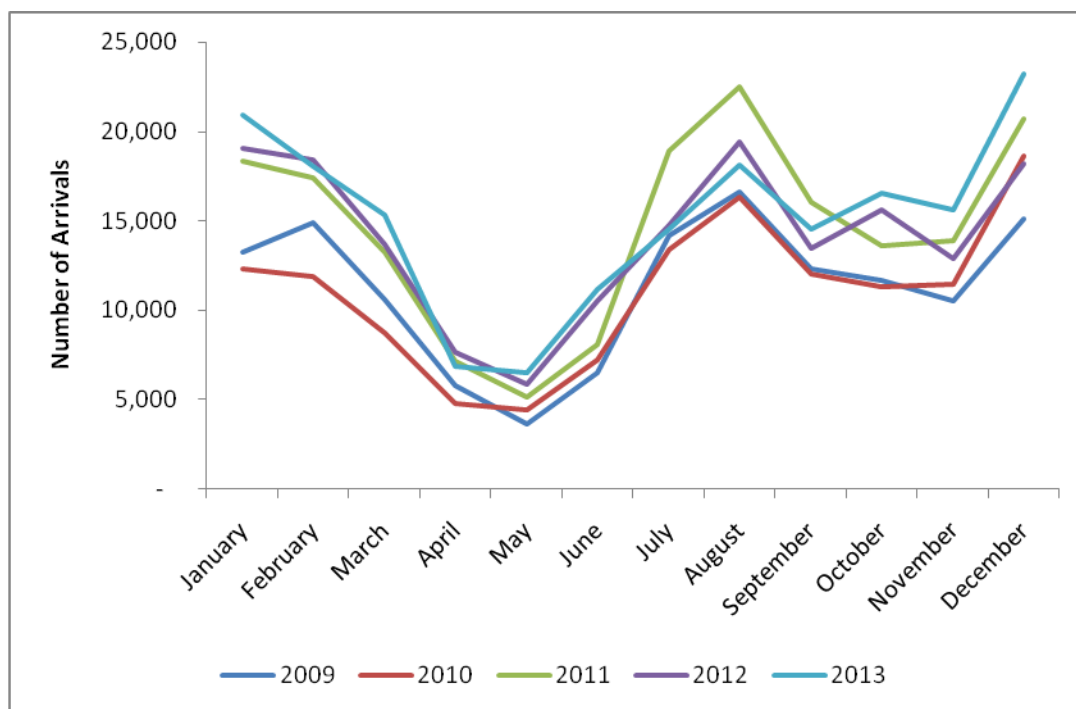
<b>Country of Residence</b>	<b>2009</b>	<b>2010</b>	<b>2011</b>	<b>2012</b>	<b>2013</b>
<b>EUROPE</b>					
Scandinavia	8,719	7,814	8,863	8,887	10,056
United Kingdom	13,377	13,757	13,103	12,288	13,763
German	8,188	8,750	11,139	12,337	14,891
Italy	45,244	41,234	61,639	48,795	50,966
France	4,608	4,415	6,130	8,768	12,542
Dutch	3,781	-	4,427	4,820	4,679
Belgium	1,808	-	3,999	4,438	4,196
Russia	-	-	1,063	1,375	1,411
Turkey	-	-	1,230	2,447	1,382
Spain	-	-	1,622	2,156	2,154
Other European Country	11,189	17,647	11,839	12,492	13,047
<b>Subtotal</b>	<b>96,914</b>	<b>93,617</b>	<b>125,054</b>	<b>118,803</b>	<b>129,087</b>
<b>ASIA</b>					
Japan	799	718	1,137	1,645	1,227
China	-	-	1,698	1,912	1,927
Other Asia	5,477	5,708	7,428	7,872	10,802
<b>Subtotal</b>	<b>6,276</b>	<b>6,426</b>	<b>10,263</b>	<b>11,429</b>	<b>13,956</b>
<b>AFRICA</b>					
Kenya	4,414	5,054	6,077	6,148	7,249
South Africa	9,575	9,410	12,290	11,145	10,120
Other Africa	3,406	3,015	4,366	5,605	4,761
<b>Subtotal</b>	<b>17,395</b>	<b>17,479</b>	<b>22,733</b>	<b>22,898</b>	<b>22,130</b>
<b>AMERICA</b>					
United states& Canada	9,540	9,436	10,752	9,709	10,014
Other American Country	931	1,309	1,566	2,157	1,694
<b>Subtotal</b>	<b>10,471</b>	<b>10,745</b>	<b>12,318</b>	<b>11,866</b>	<b>11,708</b>
<b>OCEANIA</b>					
Australia/New Zealand	3,898	4,569	4,699	4,227	4,420
	<b>3,898</b>	<b>4,569</b>	<b>4,699</b>	<b>4,227</b>	<b>4,420</b>
<b>All Countries</b>	<b>134,954</b>	<b>132,836</b>	<b>175,067</b>	<b>169,223</b>	<b>181,301</b>

Source: Zanzibar Commission for Tourism

**Table 3.1.6: Percentage Annual Record of Tourist Arrivals in Zanzibar by Country of Residence 2009 – 2013**

<b>Country of Residence</b>	<b>2009</b>	<b>2010</b>	<b>2011</b>	<b>2012</b>	<b>2013</b>
<b>EUROPE</b>					
Scandinavia	6.5	5.9	5.1	5.3	5.5
United Kingdom	9.9	10.4	7.5	7.3	7.6
German	6.1	6.6	6.4	7.3	8.2
Italy	33.5	31.0	35.2	28.8	28.1
France	3.4	3.3	3.5	5.2	6.9
Dutch	2.8	0.0	2.5	2.8	2.6
Belgium	1.3	0.0	2.3	2.6	2.3
Russia	0.0	0.0	0.6	0.8	0.8
Turkey	0.0	0.0	0.7	1.4	0.8
Spain	0.0	0.0	0.9	1.3	1.2
Other European Country	8.3	13.3	6.8	7.4	7.2
<b>Subtotal</b>	<b>71.8</b>	<b>70.5</b>	<b>71.4</b>	<b>70.2</b>	<b>71.2</b>
<b>ASIA</b>					
Japan	0.6	0.5	0.6	1.0	0.7
China	0.0	0.0	1.0	1.1	1.1
Other Asia	4.1	4.3	4.2	4.7	6.0
<b>Subtotal</b>	<b>4.7</b>	<b>4.8</b>	<b>5.9</b>	<b>6.8</b>	<b>7.7</b>
<b>AFRICA</b>					
Kenya	3.3	3.8	3.5	3.6	4.0
South Africa	7.1	7.1	7.0	6.6	5.6
Other Africa	2.5	2.3	2.5	3.3	2.6
<b>Subtotal</b>	<b>12.9</b>	<b>13.2</b>	<b>13.0</b>	<b>13.5</b>	<b>12.2</b>
<b>AMERICA</b>					
United states& Canada	7.1	7.1	6.1	5.7	5.5
Other American Country	0.7	1.0	0.9	1.3	0.9
<b>Subtotal</b>	<b>7.8</b>	<b>8.1</b>	<b>7.0</b>	<b>7.0</b>	<b>6.5</b>
<b>OCEANIA</b>					
Australia/New Zealand	2.9	3.4	2.7	2.5	2.4
<b>Annual Growth rate</b>	<b>5.1</b>	<b>-1.6</b>	<b>31.8</b>	<b>-3.3</b>	<b>7.1</b>

Source: Zanzibar Commission for Tourism



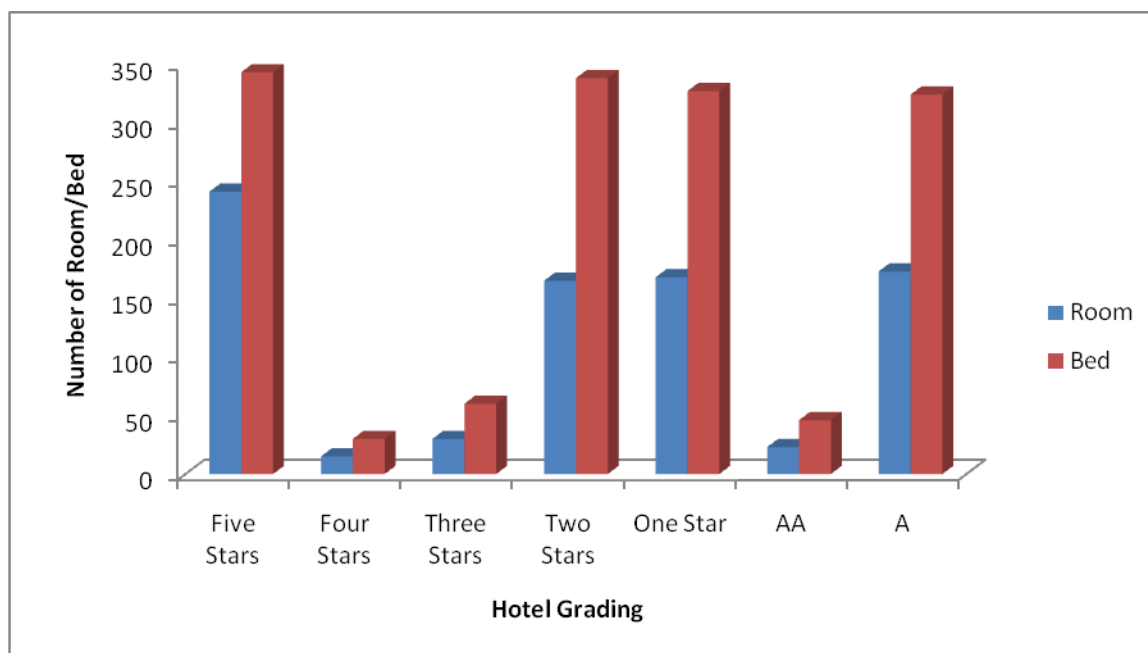
Source: Zanzibar Commission for Tourism

**Figure 3.1.3: Monthly Visitor Arrivals, 2009 – 2013**

**Table 3.1.7: Approved Hotel/Guests by District and Grading in Zanzibar, 2013**

DISTRICT		Grades							TOTAL
		Five Stars	Four Stars	Three Stars	Two Stars	One Star	AA	A	
MJINI	Hotel	0	1	0	1	0	1	9	12
	Room	0	10	0	43	0	16	73	142
	Bed	0	20	0	88		32	131	271
MAGHARIBI	Hotel	0	0	0	0	1	0	2	3
	Room	0	0	0	0	7	0	8	15
	Bed	0	0	0	0	15	0	16	31
KASKAZINI A	Hotel	2	0	0	0	1	0	12	15
	Room	167	0	0	0	23	0	74	264
	Bed	245	0	0	0	46	0	136	427
KATI	Hotel	1	0	0	0	2	0	2	5
	Room	74	0	0	0	117	0	18	209
	Bed	98	0	0	0	224	0	41	363
KUSINI	Hotel	0	1	1	13	0	0	0	15
	Room	0	5	30	122	0	0	0	157
	Bed	0	10	60	250	0	0	0	320
CHAKE	Hotel	0	0	0	0	1	0	0	1
	Room	0	0	0	0	21	0	0	21
	Bed	0	0	0	0	42	0	0	42
MKOANI	Hotel	0	0	0	0	0	1	0	1
	Room	0	0	0	0	0	7	0	7
	Bed	0	0	0	0	0	14	0	14
TOTAL	<b>Hotel</b>	<b>3</b>	<b>2</b>	<b>1</b>	<b>14</b>	<b>5</b>	<b>2</b>	<b>25</b>	<b>52</b>
	<b>Room</b>	<b>241</b>	<b>15</b>	<b>30</b>	<b>165</b>	<b>168</b>	<b>23</b>	<b>173</b>	<b>815</b>
	<b>Bed</b>	<b>343</b>	<b>30</b>	<b>60</b>	<b>338</b>	<b>327</b>	<b>46</b>	<b>324</b>	<b>1468</b>

Source: Zanzibar Commission for Tourism



Source: Zanzibar Commission for Tourism

**Figure 3.1.4: Record of Number of Rooms and Beds by grading, 2013**

**Table 3.1.8: Hotel and Guest Houses by Grading, 2009 - 2013**

Year		Five Stars	Four Stars	Three Stars	Two Stars	One Star	AA	A	TOTAL
2009	Hotel/Guest	2	1	4	2	3	1	17	30
	Room	187	40	220	30	49	8	198	732
2010	Hotel/Guest	1	0	3	2	6	2	18	32
	Room	15		40	68	72	11	209	415
2011	Hotel/Guest	3	0	2	1	4	5	22	37
	Room	133	0	94	33	60	25	186	531
2012	Hotel/Guest	-	-	2	-	3	1	14	20
	Room	-	-	55	-	33	10	88	186
2013	Hotel/Guest	3	2	1	14	5	2	25	52
	Room	241	15	30	165	168	23	173	815
TOTAL	Hotel/Guest	9	3	12	19	21	11	96	171
	Room	576	55	439	296	382	77	854	2,679

Source: Zanzibar Commission for Tourism

**Table 3.1.9: Number of Rooms and Beds in Registered Hotels and Guest Houses by District, 2009-2013**

YEAR		2009	2010	2011	2012	2013	Total
MJINI	Room	74	55	81	70	142	422
	Bed	134	101	162	140	271	808
MAGHARIBI	Room	14	12	66	8	15	115
	Bed	18	24	128	16	31	217
KASKAZINI "A"	Room	363	63	162	48	264	900
	Bed	724	115	296	86	427	1,648
KASKAZINI "B"	Room	6	91	18	19	0	134
	Bed	20	182	36	30	0	268
KATI	Room	204	88	25	10	209	536
	Bed	398	108	49	20	363	938
KUSINI	Room	41	107	170	31	157	506
	Bed	80	205	280	61	320	946
WETE	Room	0	0	0	0	0	0
	Bed	0	0	0	0	0	0
MICHEWENI	Room	4	0	0	0	0	4
	Bed	6	0	0	0	0	6
CHAKE	Room	26	0	5	0	21	52
	Bed	45	0	5	0	42	92
MKOANI	Room	0	4	4	0	7	15
	Bed	0	12	8	0	14	34
TOTAL	Room	732	420	531	186	815	2,684
	Bed	1,425	747	964	353	1,468	4,957

Source: Zanzibar Commission for Tourism

**Table 3.1.10: Aircraft movements at Abeid A. Karume International Airport, 2013**

	AIRCRAFT MOVEMENTS		
	Arrivals	Departures	Total
<b>Commercial Air Transport</b>			
International Scheduled	2,574	2,525	9,831
International Non-Schedule	448	443	1,630
<b>Total international</b>	<b>3022</b>	<b>2,968</b>	<b>11,461</b>
Domestic Scheduled	11,787	11,852	45,098
Domestic Non-Scheduled	8,399	8,398	32,163
<b>Total Domestic</b>	<b>20,186</b>	<b>20,250</b>	<b>77,261</b>
<b>Total Commercial</b>	<b>23,208</b>	<b>23,218</b>	<b>88,722</b>
International All-freight mail services	45	45	90
<b>All Other Movements</b>			
International services	53	54	208
Domestic Services	705	716	2,673
<b>GRAND TOTAL</b>	<b>24,011</b>	<b>24,033</b>	<b>91,693</b>

Source: Zanzibar Airport Authority

## **3.2 Trade Statistics**

Trade statistics provide brief explanation of flows and directions of imports and exports. This exercise also provides statistics on imports and exports which form a valuable component of a country's statement of economic transactions in the national accounts and balance of payments.

This chapter contains international trade statistics and interstate trade statistics which show imports and exports trend from 2009 to 2013. These statistics are compiled from declarations forms filled by importers and exporters at the Customs Office of TRA.

### **3.2.1 International Trade Statistics**

International trade statistics measure the value and quantity of goods traded between Zanzibar and the rest of the world. They are the official harmonized source of information about imports, exports and trade balance between import and export. Data on international trade are compiled as per recommendations of the United Nations General Trade System (UNGTS). According to this system, all goods imported and exported to the national frontier, including trading activities of the Freeport Zone should be accounted for.

### **3.2.2 Total Value of Trade and Trade Balance**

Total value of trade represents an addition value for both import and export while balance of trade represents a difference in value for import and export for a country. A country demonstrates a demand for an import when domestic quantity demanded exceeds domestic quantity supplied, or when the price of the good or service on the world market is less than the price on the domestic market. The country experiences trade deficit if import value is always higher than export value. Total international trade in 2013 valued at Tanzanian shillings 295,851.5 million.

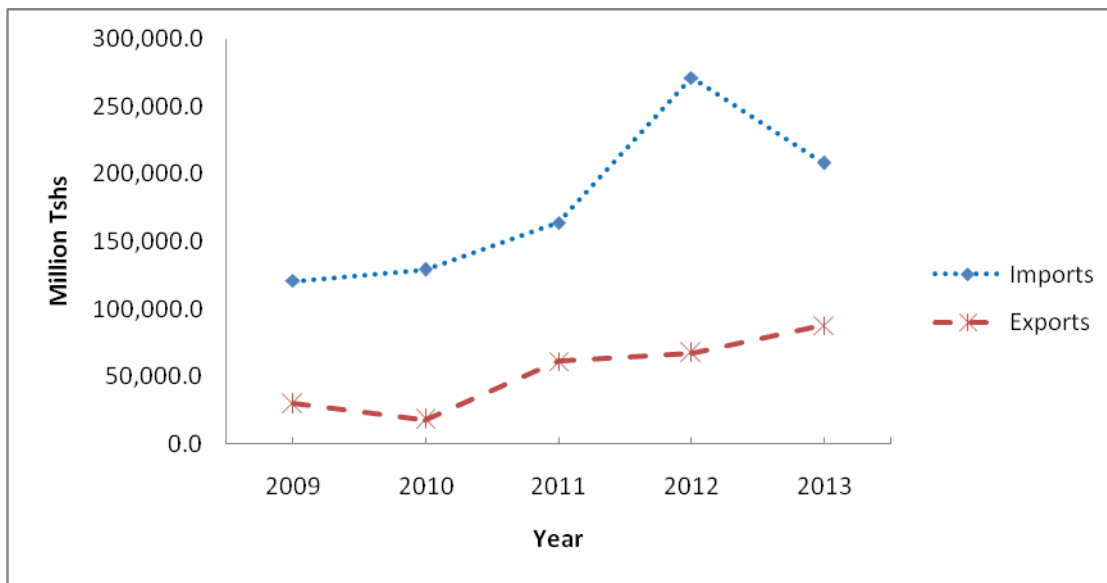
In 2013, total exports amounted to Tanzanian shillings 87,799.6 million compared to Tanzanian shillings 67,390.5 million in 2012 which is an increase of 30 percent. Imports amounted to Tanzanian shillings 208,051.9 million compared to Tanzanian shillings 27,123 million which is an increases of 23 percent. The import and export value shows to have trade deficit of Tanzanian shillings 120,252.2 million in 2013.

**Table 3.2.2.1: Balance of Trade, 2009 – 2013**

(Millions Tanzanian Shillings)

Description	2009	2010	2011	2012	2013
Imports	120,882.0	129,136.8	164,187.1	271,273.1	208,051.9
Exports	29,744.5	17,906.7	61,261.4	67,390.5	87,799.6
<b>Volume</b>	<b>150,626.5</b>	<b>147,043.5</b>	<b>225,448.5</b>	<b>338,663.6</b>	<b>295,851.5</b>
<b>Balance</b>	<b>-91,137.5</b>	<b>-111,230.1</b>	<b>-102,925.7</b>	<b>-203,882.5</b>	<b>-120,252.2</b>

Source: Tanzania Revenue Authority (TRA), Dar-es-Salaam



Source: Tanzania Revenue Authority (TRA) – Head Quarter, Dar-es-Salaam

**Figure 3.2.2.1: Trend of Imports and Exports Trade in Zanzibar, 2009-2013**

### **Exports by section**

In international trade, "exports" refer to selling goods and services produced in the home country to other markets. An export of goods occurs when there is a change of ownership from a resident to a non-resident. Total export proceeds in 2013, including export of goods locally grown or produced (unprocessed).

Table 3.2.2.2 shows exports of 'vegetable products' which include cloves, seaweeds, copra, clove stem and other products for the year 2013 amounted to Tanzanian shillings 75,392.6 million indicating an increase of 19 percent over the year 2012. Vegetable products contribute almost 85 percent of total export in 2013 followed by 'wood and articles of wood' contributing 8.0 percent. Remaining sections contributed less than 1.0 percent.

The trend shows that value of exports on vegetable products are higher in all past five years, this is due cloves and seaweed are the cash crops in Zanzibar which is more exported.

**Table 3.2.2.2: Value of Exports by Section, 2009 – 2013**

(Million Tanzanian Shillings)

<b>Section</b>	<b>2009</b>	<b>2010</b>	<b>2011</b>	<b>2012</b>	<b>2013</b>
Live animals; animal's products.	3,602.5	226.3	222.7	298.7	683.2
Vegetable products (cloves, seaweeds, copra, clove stem etc).	17,443.5	15,474.7	56,509.1	63,160.0	75,392.6
Animal, vegetables oils	0.5	0	0	0	389.9
Prepared foodstuff, beverages & tobacco	62.3	217.5	311.2	490.9	1,312.4
Mineral products	0	1.3	532.1	0	218.4
Products of the chemical or allied industries	56.6	99.5	94.6	66.4	117.2
Plastic & articles thereof	353.2	465.2	503.9	1,939.3	748.5
Raw hides and skins, leather, fur skins	1.8	0.9	5.5	5.0	67.9
Wood & wood articles	40.6	46.8	1,649.1	50.0	7,198.6
Pulp of wood or of other fibrous	2,064.9	50.0	75.8	100.6	141.2
Textiles & textiles articles	353.6	126.8	133.1	394.3	367.8
Footwear, headgears etc.	1.4	13.9	25.4	9.7	26.7
Articles of stone, cement, asbestos etc.	1.5	40.4	17.0	1.0	2.3
Natural & cultured pearls, precious stones	10.8	24.2	33.8	56.8	63.1
Base metal & articles of base metal	3,172.1	163.3	150.5	267.1	217.2
Machinery & mechanical appliances, electrical etc.	1,847.7	770.1	732.5	119.4	660.1
Vehicles, aircraft, vessels etc.	540.1	112.8	131.0	70.7	75.8
Optical, photo. C/gra. Med./sur. inst. clocks etc.	147.9	19.0	4.2	296.1	8.8
Arms and ammunition; parts and accessories thereof.	0	0	0	0	-
Miscellaneous manufactured	42.7	53.7	116.6	56.7	105.9
Works of art, collectors' pieces & antiques	1.1	0	13.2	8.0	2.0
<b>Total</b>	<b>29,744.5</b>	<b>17,906.7</b>	<b>61,261.4</b>	<b>67,390.5</b>	<b>87,799.6</b>

Source: Tanzania Revenue Authority (TRA), Dar-es- salaam

**Exports by country of destination**

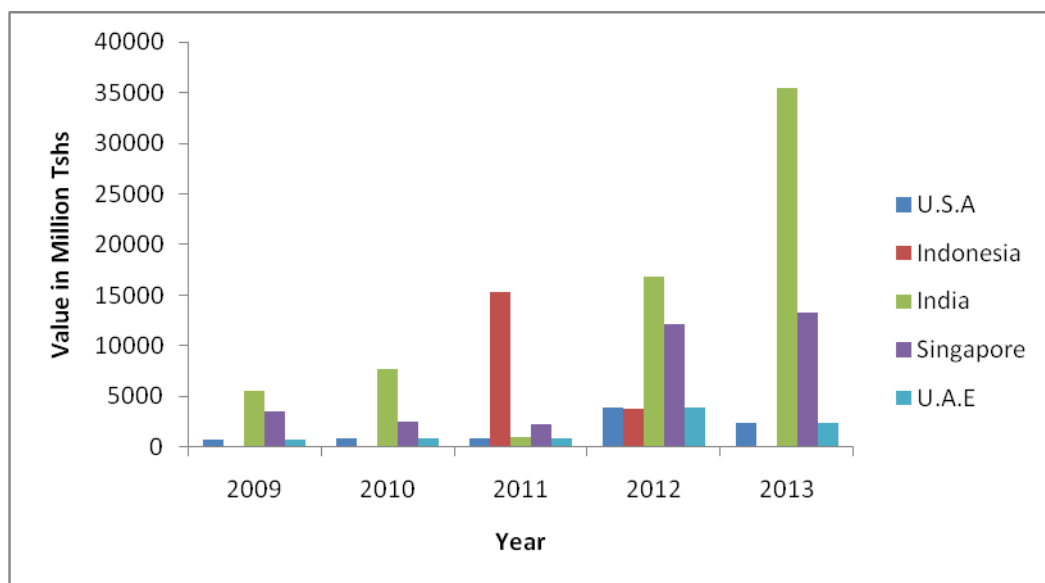
Table 3.2.2.3 shows value of Export by country of destination. In 2013 country like India, United Arab Emirates countries and Singapore were the major buyers of Zanzibar exported product. Out of Tanzania shilling 87,799.6 million received on exported product in 2013. Tanzanian shillings 35,489.9 million (40 percent) from India, Tanzanian shillings 18,961.8 (21 percent) from United Arab Emirates countries and Tanzanian shillings 13,330.2 million (15 percent) from Singapore

**Table 3.2.2.3: Value of Exports by Country of Destination, 2009 – 2013**

(Million Tanzanian Shillings)

<b>Country</b>	<b>2009</b>	<b>2010</b>	<b>2011</b>	<b>2012</b>	<b>2013</b>
Australia	0.1	0	94.9	0.5	0
Comoro	17.6	3	199.3	217.4	247.0
China	0	0	0	719.1	934.2
Denmark	747.4	1,430.9	1,680.2	2,000.4	2,005.0
Finland	22.4	0	1.5	79.4	5.7
France	1,040.1	897.4	1,232.1	1,845.8	1,110.5
Germany	44.7	0.5	230.3	36.2	0.9
Hong Kong	4,143.00	78.3	74.8	195.4	98.9
Indonesia	0	0	15,292.2	3,804.3	0
India	5,541.4	7,665.6	1,016.9	16,785.2	35,489.9
Italy	8	20.1	0.5	0.3	6.7
Japan	289.9	58.9	0	10.3	14.0
Kenya	2,068.6	412.3	179.4	49.9	289.6
Liberia	0	0	1,621.0	0	0
Malawi	81.6	57.6	0	259.1	2.6
Malaysia	20.7	22.9	22.8	6.0	50.8
Netherlands	40.1	0	1.8	0	1,065.5
Oman	7.1	10.4	15.8	9.3	63.7
Singapore	3,589.2	2,566.0	2,246.2	12,159.6	13,330.2
Switzerland	0.2	0.6	0.1	0	123.4
Swaziland	0	0	0	0.2	91.1
South Africa	133.5	85.6	97.9	4.5	134.9
Thailand	0	0	10,317.1	0	0
Uganda	0	0	0	3.9	0
United Arabs Emirates	4,955.1	721.1	16,286.0	23,122.2	18,961.8
United Kingdom	366.7	442	497.3	483.8	1,211.0
United States of America	703.5	905.7	916.4	3,932.0	2,445.1
Zambia	0	0	0	112.3	106.8
Other countries	5,923.6	2,527.8	9,237.0	1,553.7	10,010.3
<b>Total</b>	<b>29,744.5</b>	<b>17,906.7</b>	<b>61,261.4</b>	<b>67,390.5</b>	<b>87,799.6</b>

Source: Tanzania Revenue Authority (TRA), Dar-es- salaam



Source: Tanzania Revenue Authority (TRA) Headquarters Dar-es- salaam

**Figure 3.2.2.2: Exports to Main Countries, 2009-2013**

## Imports

An import of a good occurs when there is a change of ownership from a non-resident to a resident. Total imports for the year 2013, reached Tanzanian shillings 208,051.9 million, showing decrease of 23 percent when compared to Tanzanian shillings 271,273.1 million for the previous year (2012). Table 3.2.2.4 shows the highest value of import in 2013 was from ‘Vehicles, Aircraft, and Vessel section’ amounted to Tanzanian shillings 50,077.4 million equivalents to 24 percent of total import. This amount differs by Tanzanian shillings 7,633.9 million from imported value of the same section of 2012. Import of Machinery & Mechanical Appliances contributed 18 percent while imports of Mineral Products and Vegetable Products contributed 11 percent each. Other sections contributed less than 10 percent of total import.

For the year 2012, import of ‘Vehicles, Aircraft, and Vessel section’ took about 21 percent of the total imports; and ‘machinery & mechanical appliances, electrical’ about 26 percent.

**Table 3.2.2.4: Value of Direct Import by Section, 2009 – 2013**

(Million Tanzanian Shillings)

Section	2009	2010	2011	2012	2013
Live Animals, Animal Products	581.5	681.1	1,107.4	2,200.2	2,986.3
Vegetable Products (onions,	5,190.1	1,126.7	2,349.1	14,724.7	22,751.7
Animal, Vegetables Oil	1,828.6	2,483.9	4,968.7	9,743.4	12,693.7
Prepared Foodstuff, Beverages	5,181.7	3,395.0	4,495.5	5,886.4	5,181.2
Mineral Products	3,901.1	5,958.7	17,191.7	15,596.5	23,470.8
Products of Chemical or allied	3,785.5	7,153.4	6,114.6	8,851.6	6,150.6
Plastic & Articles thereof	5,437.2	4,824.1	4,013.9	2,928.1	4,825.6
Raw Hides & Skins	116.5	139.8	133.2	168.6	176.3
Wood & wood articles	1,221.5	1,201.0	949.1	2,923.6	842.2
Pulp of wood and Other	1,514.4	2,885.4	2,438.4	2,585.5	1,575.2
Textiles & Textiles articles	5,691.8	6,946.0	14,558.7	10,632.7	17,679.6
Footwear, Headgear etc.	369.1	382.7	536.4	755.8	1,702.0
Articles of Stone, Cement,	6,221.6	3,993.3	4,236.8	5,393.1	5,939.1
Natural & Cultured pearls,	17.9	23.9	39.2	27.4	26.1
Base metal & articles of base	12,056.3	5,314.8	11,341.1	51,710.8	6,873.0
Machinery & Mechanical	23,406.1	35,220.2	31,202.3	71,210.9	37,836.5
Vehicles, Aircraft, Vessel etc.	37,961.6	38,464.0	53,103.0	57,711.3	50,077.4
Optical, Photograph etc.	1,721.3	2,402.8	1,465.3	2,022.6	905.2
Arms and ammunition; parts and accessories thereof	0.7	24.1	1.7	2.2	1.4
Miscellaneous Manufactured	4,651.3	6,513.7	3,940.2	6,113.8	5,769.5
Work of Art, Antiques	26.3	2.2	0.8	84.2	588.5
<b>Total</b>	<b>120,882.0</b>	<b>129,136.8</b>	<b>164,187.1</b>	<b>271,273.1</b>	<b>208,051.9</b>

Source: Tanzania Revenue Authority (TRA), Dar-es-Salaam

**Imports by Country of Origin**

Table 3.2.2.5 shows that during the year 2013, imports from the United Arab Emirates amounted to Tanzanian shillings 65,375.7 million with a share of 31 percent of the total imports, followed by China with a share of 12 percent. Other countries share below 10 percent.

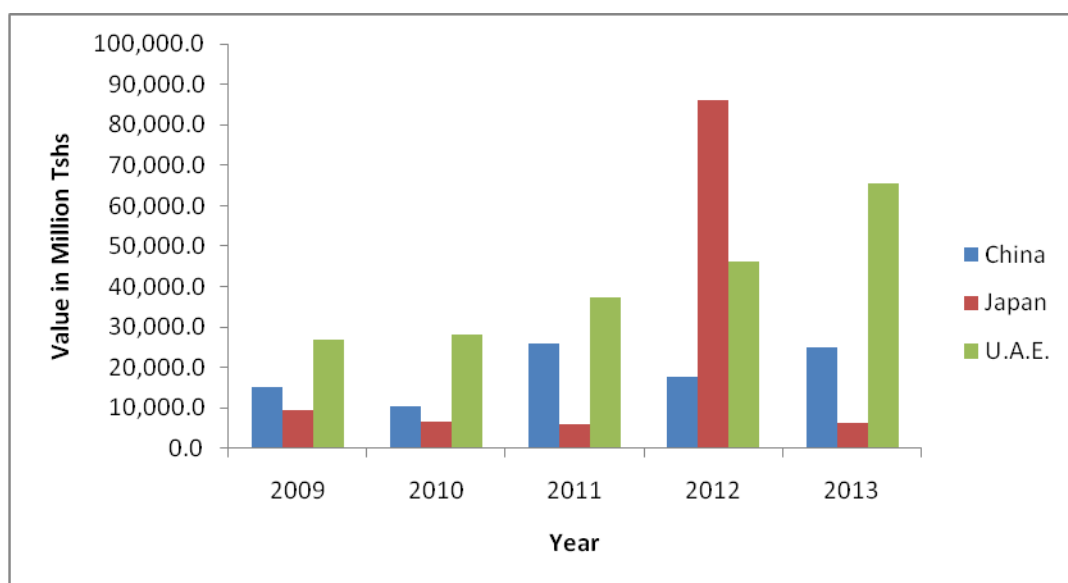
The trend shows that United Arab Emirates was the most contributors compared to other countries in all years except in 2012. In 2012 Japan amounted to Tanzanian shillings 86,076.8 million with a share of 31.7 percent of total imports. (Figure 3.2.2.3)

**Table 3.2.2.5: Direct Imports by Country of Origin, 2009 – 2013**

(Millions Tanzanian Shillings)

<b>Country</b>	<b>2009</b>	<b>2010</b>	<b>2011</b>	<b>2012</b>	<b>2013</b>
Australia	8,431.8	8,151.2	6,280.0	524.8	19,165.9
Belgium	266.4	8,902.5	85.3	1,187.5	377.6
Brazil	1,781.7	103.8	98.5	307.2	294.4
China	15,200.9	10,334.0	25,959.4	17,646.5	24,864.6
Denmark	1,396.8	536.8	319.7	134.6	243.6
Finland	236.3	39.6	208.2	0.0	0.0
France	3,423.0	1,755.3	9,989.6	1,880.1	2,164.0
Germany	500.2	1,567.1	671.1	1,161.5	496.4
Hong Kong	3,234.00	5,067.1	5,101.4	5,237.8	6,396.5
India	5,750.6	6,438.2	7,147.3	14,588.9	11,969.6
Indonesia	442.4	2,478.4	2,325.8	2,103.3	3,751.6
Iran	0.0	0.0	736.5	1,078.7	0.0
Italy	7,459.7	5,794.2	3,993.4	7,637.0	6,650.7
Japan	9,390.0	6,445.7	5,933.0	86,076.8	6,410.9
Kenya	1,510.4	510.5	5,350.2	3,896.7	679.3
Malaysia	658.5	542.7	594.5	945.8	3,804.4
Netherlands	2,123.0	4,940.7	1,328.5	624.3	1,279.2
Oman	1,219.9	965.4	2,044.8	3,716.7	2,405.2
Pakistan	1,801.7	4,255.8	11,305.8	9,860.2	11,947.8
Philippines	2.0	2.7	0.0	0.0	
Singapore	5,408.3	6,715.3	9,999.9	15,531.0	7,526.1
South Africa	2,623.1	5,409.8	1,885.3	2,357.6	3,883.0
South Korea	291.6	609.0	230.9	133.1	179.8
Sweden	976.9	254.2	64.4	265.5	2,076.7
Switzerland	53.7	26.7	90.4	251.9	65.2
Thailand	1,636.4	1,444.1	1,278.9	2,061.6	2,626.2
Turkey	0.0	0.0	3,863.4	3,868.7	8,082.6
United Arab Emirates	26,903.1	28,057.5	37,385.3	46,206.6	65,375.7
United Kingdom	7,484.1	6,453.3	7,850.4	10,171.7	8,199.7
United States of	1,353.2	3,611.5	7,441.1	6,207.0	3,060.1
Vietnam	408.3	0.0	71.4	2.5	0.0
Other Countries	8,913.2	7,723.8	4,552.7	25,607.3	4,075.0
<b>Total</b>	<b>120,882.0</b>	<b>129,136.8</b>	<b>164,187.1</b>	<b>271,273.1</b>	<b>208,051.9</b>

Source: Tanzania Revenue Authority (TRA), Dar-es-Salaam



Source: Tanzania Revenue Authority (TRA), Dar-es-Salaam

**Figure 3.2.2.3: Imports from Main Countries, 2009-2013**

### Import of Petroleum Products

During the year 2013, imports of petrol amounted to 35,021,352 litres, an increase of 6 percent from previous year, 2012; imports of diesel decreased by 17 percent from the year 2012; kerosene increased by 46 percent; jet A-1 fuel increased by 1.5 percent; there was no importation of IDO for three years consecutively, 2011 and 2013 as illustrated in table 3.3.1.6. Importation of IDO is no longer needed; it was used for running generators in Pemba to generate electricity. Currently Pemba is connected to national grid by using a marine cable from *Nyumba ya Mungu* in Tanga.

**Table 3.2.2.6: Imports of Fuel Products, 2009– 2013**

Product	(Litres at 20° C)				
	2009	2010	2011	2012	2013
Petrol	22,442,890	24,850,883	26,730,752	32,934,870	35,021,352
Diesel	32,227,708	40,064,623	30,682,112	48,226,216	40,130,854
Kerosene	8,034,531	9,544,806	7,297,493	5,657,594	8,278,556
Jet A-1	5,508,805	6,421,967	8,395,480	9,097,923	9,231,850
IDO	5,603,773	1,097,577	0	0	0

Source: Ministry of Lands, Housing, Water and Energy

Table 3.3.1.7 shows that the total of 38,012,660 litres of petrol was supplied to petrol stations in the year 2013. That is four percent increase from 2012. Diesel supplied increased by seven percent, kerosene increased by 24 percent and Jet A-1 decreased by 26 percent.

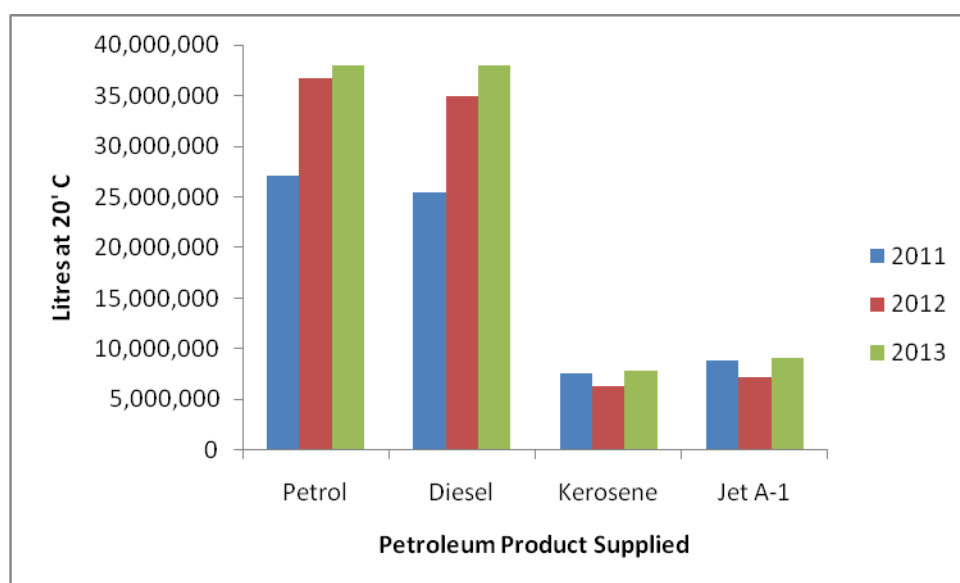
**Table 3.2.2.7: Supply of Fuel Products, 2011-2013**

(Litres at 20' C)

Year	Petrol	Diesel	Kerosene	Jet A-1	Bunker
2011	27,138,131	25,382,479	7,598,229	8,905,396	8,095,518
2012	36,722,534	34,976,950	6,343,397	7,154,102	0
2013	38,012,660	37,978,558	7,904,477	9,063,220	0

Source: Ministry of Lands, Housing, Water and Energy

The trend shows that the supply of petrol and diesel are increased every year while supply of kerosene and jet A-1 are fluctuate from one year to another.



Source: Ministry of Lands, Housing, Water and Energy

**Figure 3.2.2.4: Supply of Fuel Products, 2011-2013**

### 3.2.3 Inter-State Trade Statistics

Inter-state trade statistics provides an idea about the demand of commodities produced or consumed in a state (Zanzibar) along with flow thereof to other side of country (Tanzania Mainland). Different goods include foods and non-foods such as building hardware, transport hardware and other material were imported from Tanzania Mainland.

Total value of goods imported from Tanzania Mainland to Zanzibar worth Tanzanian shillings 61,869.3 million in 2013, decrease of 22 percent from 2012. On the other hand, the total value of goods transferred from Zanzibar to Tanzania Mainland amounted to Tanzanian shillings 501,204.2 million that is twice higher compared with 2012 value. Further analysis indicated that the higher value due to transferred goods of ‘*Window or wall air conditioning machines, self-contained*’, *Lubricating oils, Lubricating greases*, ‘*Worn clothing and other worn articles*’, ‘*Shawls, scarves, mufflers, mantillas, veils, knitted or crocheted*’ and *kitchen glassware of lead crystal*.

**Table 3.2.3.1: Transfer of Goods between Zanzibar Tanzania Mainland, 2009-2013**

(Million Tanzanian Shillings)

Year	2009	2010	2011	2012	2013
To Zanzibar	19,651.0	23,268.7	74,738.3	79,666.2	61,869.3
To Mainland	1,341.1*	2,203.8*	71,396.8	224,400.5	501,204.2

Source: Ministry of Trade, Industries and Marketing.

\* Estimates based on previous trend.

### 3.3 Transport Statistics

The transport statistics represented in table 3.3.1, 3.3.2 and 3.3.3, which show the traffic handling of passengers, cargoes and number of trips (enter/exit) on both airports and seaports. The section also comprises the details on number of motor vehicles licensed as well as the reported victims of the road accidents.

Table 3.3.1 shows that the number of passengers at seaports increased by 37 percent; in 2013 2,862,188 compared to 2,085,679 of 2012, this increase cause by increasing number of foreign going vessels trips 186 for the year 2013 compared to 156 for the 2012. The performance of cargo handling at Zanzibar seaports decreased by 0.5 percent, 988,417 tons in 2012 to 983,678 tons in 2013

**Table 3.3.1: Traffic Handled at Zanzibar Seaports, 2009 – 2013**

<b>Description</b>	<b>Unit</b>	<b>2009</b>	<b>2010</b>	<b>2011</b>	<b>2012</b>	<b>2013</b>
Trip enter/exit	Number	4,475	4771	5,081	4,992	4,083
Passengers	Number	1,739,799	1,772,837	2,047,452	2,085,679	2,862,188
Cargo	Tons	573,337	692,394	753,399	988,417	983,678
Foreign Going Vessels	Number	174	172	166	156	186

Source: Zanzibar Port Corporation

Table 3.3.2 indicates aircraft movements at Zanzibar airports has increased from 53,000 in 2012 to 56,000 in 2013 which is equivalent to 6 percent, while embarked and disembarked passengers increased by 12 percent and 8 percent in 2012 to 2013 respectively. The cargo handled increased for both loaded freights from 24 tons in 2012 to 27 tons in 2013 which is thirteen Percent and freight off loaded 994 in 2012 to 789 in 2013 which is equivalent to 57 twenty four percent.

**Table 3.3.2: Aircraft Movements, Passengers and Cargo Handled in Zanzibar Airport, 2009- 2013**

<b>Description</b>		<b>2009</b>	<b>2010</b>	<b>2011</b>	<b>2012</b>	<b>2013</b>
Passengers	Embarked (Departure)	262,217	304,462	359,641	376,498	421,698
	Disembarked (Arrivals)	259,697	295,120	367,853	384,760	416,736
	In transit	65,163	76,609	86,801	104,033	87,233
<b>Total</b>		<b>587,077</b>	<b>676,191</b>	<b>814,295</b>	<b>865,291</b>	<b>925,667</b>
Load (Tones)	Freights loaded	15	16	17	24	27
	Freights off-loaded	632	569	772	994	1,315
<b>Total</b>		<b>647</b>	<b>585</b>	<b>789</b>	<b>1,218</b>	<b>1,342</b>
Mail (Tones)	Mails loaded	0	0	0	0	0
	Mails off-loaded	0	0	0.3	0.4	0
<b>Total</b>		<b>0</b>	<b>0</b>	<b>0.3</b>	<b>0.4</b>	<b>0</b>
Movements	Number(000)	39	44	49	53	56

Source: Directorate of Aviation, Zanzibar

### Vehicles Licensed

Table 3.3.3 shows the registration of different types of motor vehicles licensed from 2009 to 2013. This includes motor cars, estate cars and station wagons, passengers' cars, motor cycles and three wheelers, Lorries and buses and other vehicles. The total registration increased from 16,034 in 2012 to 16,603 in 2013 which is equivalent to four percent.

**Table 3.3.3: Motor Vehicles Licensed, 2009- 2013**

Description	2009	2010	2011	2012	2013
Motor Car, Estate car and Station wagons	6,058	7,132	8,122	3,421	2,486
Passenger Cars	1,920	1,934	2,208	4,467	5,366
Motor Cycles and Three Wheelers	13,638	6,754	6,871	4,977	5,833
Lorries and Busses	1,352	89	829	1,882	2,044
Tractors and Others	174	1,685	1,287	1,287	874
<b>Total</b>	<b>23,142</b>	<b>17,594</b>	<b>19,317</b>	<b>16,034</b>	<b>16,603</b>

Source: Zanzibar Revenue Board

### Road Transport

An important component of transport infrastructure is road transport. It is apparent from table 3.3.4 data shows that the length of all roads is 1,189 km. in which 668 km. are paved roads<sup>1</sup>. Other side of road condition data shows that 54 percent out of total, the conditions of paved roads are good.

**Table 3.3.4: Zanzibar Road Network (kilometres) as at December, 2013**

Road Class	Total	PAVED						UNPAVED					
		Very Good	Good	Fair	Poor	Very Poor	Total	Very Good	Good	Fair	Poor	Very Poor	Total
Trunk Roads	353	135	99	26	17	21	298	0	18	0	21	16	55
Urban Roads	68	29	14	7	3	2	55	0	0	2	4	6	12
Rural Roads	495	179	77	15	4	12	287	0	1	64	85	58	208
Feeder Roads	273	17	10	0	0	1	28	0	11	79	97	59	246
<b>Total</b>	<b>1,189</b>	<b>360</b>	<b>200</b>	<b>48</b>	<b>24</b>	<b>36</b>	<b>668</b>	<b>0</b>	<b>30</b>	<b>145</b>	<b>207</b>	<b>139</b>	<b>521</b>

Source: Department of Road Construction and Maintenance, Zanzibar

<sup>1</sup> Paved roads are those surfaces with crushed stone (macadam) and hydrocarbon binder or bituminized agents with concrete or with cobblestone

**Table 3.3.5: Licensed Broadcasting Stations, Telephone and Internet Operators in Zanzibar 2010-2013**

Description	2010	2011	2012	2013
<b>1. Telephone and internet Operators:</b>				
Fixed Lines Operators	2	2	2	2
Mobile Operators	5	5	5	5
Data Operators and Internet Service Providers	8	8	8	8
<b>2. Number of Internet Subscribers</b>	3	3	3	3
<b>3. Number of Television Stations</b>	5	6	7	9
Public Owner	2	2	3	3
Private Owner	3	4	4	6
<b>4. Number of Radio Stations:</b>				
Public Owner	4	4	4	4
Private Owner	10	11	11	12
Community Radio Station (Donor)	1	1	2	3

Source: Zanzibar Broadcasting Commission, Ministry of Infrastructure

**Table 3.3.6: Reported Victims of Road Accidents Zanzibar, 2009- 2013**

(Numbers)

Description	Victims	2009	2010	2011	2012	2013p
Persons Killed	Drivers	6	6	8	12	7
	Passengers	21	33	23	31	31
	Cyclists	34	26	33	45	47
	Pedestrians	38	46	46	52	56
	<b>Total</b>	<b>99</b>	<b>93</b>	<b>110</b>	<b>139</b>	<b>141</b>
Persons Injured	Drivers	62	79	68	71	83
	Passengers	393	642	445	499	425
	Cyclists	302	343	376	314	298
	Pedestrians	219	271	234	218	235
	<b>Total</b>	<b>967</b>	<b>1,335</b>	<b>1,123</b>	<b>1,102</b>	<b>1041</b>
Traffic Offences	Drinks/Drugs	0	41	0	0	1
	Mechanical defect	492	337	361	384	546
	Dangerous/carelessness	1,156	996	584	580	825
	Other offences	9,670	14,355	14,719	16,530	15,311
	<b>Total</b>	<b>11,318</b>	<b>15,729</b>	<b>15,664</b>	<b>17,494</b>	<b>16,683</b>

Source: Police Headquarters Zanzibar

**Table 3.3.7: Reported Victims of Road Accidents in Unguja, 2009- 2013**

		(Number)				
<b>Description</b>	<b>Victims</b>	<b>2009</b>	<b>2010</b>	<b>2011</b>	<b>2012</b>	<b>2013p</b>
Persons Killed	Drivers	3	5	7	10	3
	Passengers	20	23	21	26	27
	Cyclists	29	24	29	34	35
	Pedestrians	33	39	35	44	38
	<b>Total</b>	<b>85</b>	<b>91</b>	<b>92</b>	<b>113</b>	<b>103</b>
Persons Injured	Drivers	52	75	54	60	70
	Passengers	349	534	385	459	353
	Cyclists	292	332	353	303	259
	Pedestrians	211	262	220	203	214
	<b>Total</b>	<b>904</b>	<b>1,203</b>	<b>1,012</b>	<b>1,025</b>	<b>896</b>
Traffic Offences	Drinks/Drugs	0	41	0	0	1
	Mechanical defect	481	328	347	366	539
	Dangerous/carelessness	1,044	820	514	434	708
	Other offences	8,315	12,690	12735	13,962	13,117
	<b>Total</b>	<b>9,840</b>	<b>13,879</b>	<b>13,596</b>	<b>14,762</b>	<b>14,365</b>

Source: Police Headquarters, Zanzibar

**Table 3.3.8: Reported Victims of Road Accidents Pemba, 2009- 2013**

		(Number)				
<b>Description</b>	<b>Victims</b>	<b>2009</b>	<b>2010</b>	<b>2011</b>	<b>2012</b>	<b>2013p</b>
Persons Killed	Drivers	3	1	1	2	4
	Passengers	1	10	2	5	4
	Cyclists	5	2	4	11	12
	Pedestrians	5	7	11	8	18
	<b>Total</b>	<b>14</b>	<b>20</b>	<b>18</b>	<b>26</b>	<b>38</b>
Persons Injured	Drivers	10	4	14	11	13
	Passengers	44	108	60	40	72
	Cyclists	10	11	23	11	39
	Pedestrians	8	9	14	15	21
	<b>Total</b>	<b>63</b>	<b>132</b>	<b>111</b>	<b>77</b>	<b>145</b>
Traffic Offences	Drinks/Drugs	0	0	0	0	0
	Mechanical defect	11	9	14	18	7
	Dangerous/carelessness	112	176	70	146	117
	Other offences	1,355	1665	1984	2,568	2194
	<b>Total</b>	<b>1,478</b>	<b>1,850</b>	<b>2,068</b>	<b>2,732</b>	<b>2318</b>

Source: Police Headquarters, Zanzibar

## 4.0 Production Statistics

Production Statistics Section is charged with the responsibility of collecting comprehensive data and information on the production sector which includes agriculture, industrial production, construction, and environment statistics.

### 4.1 Agriculture Statistics

Agriculture statistics comprises data on cash crops, food crops, forest products as well as fish catches and livestock products expressed in both quantity and values. The sector plays a very significant role in the economy for example in 2013 the contribution of agriculture sector to GDP was 31.1 percent.

#### Clove Production

The quantity purchased of clove in 2013 was 5,732.8 ton and in 2012 were 1,755.4 which is an increase of 217 percent. This increasing is significantly contributed to the purchasing price to the farmer especially in the third and fourth quarter where the quantity purchased was 1,970 and 2,807 respectively (table 4.1.1)

**Table 4.1.1: Quantity and Value for Clove, 2011- 2013**

Month	2011		2012		2013	
	Quantity Purchased (tons)	Total Value (Shillings)	Quantity Purchased (tons)	Total Value (Shillings)	Quantity Purchased (tons)	Total Value (Shillings)
January	23	114,520,000	894	13,396,399,000	696	8,703,514,750
February	17	82,893,000	147	2,205,422,000	177	2,208,378,500
March	34	168,782,000	54	814,215,750	43	541,507,250
<b>Q1</b>	<b>73</b>	<b>366,195,000</b>	<b>1,095</b>	<b>16,416,036,750</b>	<b>916</b>	<b>11,453,400,500</b>
April	13	66,308,000	26	387,384,500	24	298,830,000
May	1	5,790,000	28	412,927,750	9	118,228,000
June	0	1,565,500	61	918,296,865	6	77,404,000
<b>Q2</b>	<b>15</b>	<b>73,663,500</b>	<b>115</b>	<b>1,718,609,115</b>	<b>40</b>	<b>494,462,000</b>
July	38	454,144,000	37	558,757,500	156	2,189,510,000
August	461	6,825,206,250	59	584,785,500	791	11,066,658,000
September	559	8,386,616,500	10	99,190,000	1,022	14,303,130,000
<b>Q3</b>	<b>1,058</b>	<b>15,665,966,750</b>	<b>106</b>	<b>1,242,733,000</b>	<b>1,970</b>	<b>27,559,298,000</b>
October	975	14,603,202,750	11	125,888,000	794	11,108,500,000
November	663	9,935,470,000	38	469,822,500	510	7,127,758,000
December	959	14,578,180,250	391	4,893,134,000	1,504	21,038,447,000
<b>Q4</b>	<b>2,597</b>	<b>39,116,853,000</b>	<b>440</b>	<b>5,488,844,500</b>	<b>2,807</b>	<b>39,274,705,000</b>
<b>Total</b>	<b>3,743</b>	<b>55,222,678,250</b>	<b>1,755</b>	<b>24,866,223,365</b>	<b>5,733</b>	<b>78,781,865,500</b>

Source: Zanzibar State Trade Company (ZSTC)

## **Cash Crops**

Table 4.1.2 shows the Quantity of Main Cash Crops (cloves, cloves stem, seaweed and rubber) from 2009 to 2013. The purchase of cloves increases from 1,755 tons in 2012 to 5,733 tons in 2013. The quantity purchased of Clove Stem increases from 328.4 tons in 2012 to 492.9 tons in 2013 which is an increasing of 50 percent. The quantity purchased of seaweed decrease from 15087 tons in 2012 to 11044 tons in 2013, decreasing of 271 percent. The production of rubber increases from 385 tons in 2012 to 394.1 tons in 2013 makes the difference of 9.1 tons equivalent to one percent which is an increasing of 2.4 percent.

**Table 4.1.2: Quantity and Value of Production of Main Cash Crops, 2009- 2013**

(Value in 000' Tanzanian Shillings)

<b>Crop</b>	<b>2009</b>		<b>2010</b>		<b>2011</b>		<b>2012</b>		<b>2013p</b>	
	<b>Tons</b>	<b>Value</b>	<b>Tons</b>	<b>Value</b>	<b>Tons</b>	<b>Value</b>	<b>Tons</b>	<b>Value</b>	<b>Tons</b>	<b>Value</b>
Cloves	3,536	10,224,043	2,129	7,447,000	3,743	55,222,678	1,755.4	24,699,357	5,733	78,781,866
Clove Stem	445	44,279	280	44,791	468	702,300	328.4	485,006	492.6	342,570
Seaweed	10,248	1,665,543	11,937	2,982,541	13,193	4,132,828	15,087	6,062,896	11,043.8	413,4890
Rubber	428	694,850	564	915,643	457	760,890	385	1,210,440	394.1	1,272,943

Sources: (i) Zanzibar State Trading Corporation (ZSTC)  
(ii) Ministry of Livestock and Fisheries  
(iii) AGROTEX Company

### Planted Area of Food Crops

Total area planted for common food crops such as Maize, Paddy, Sweet Potatoes, Groundnuts, Pigeon Peas and Cowpeas/Green grams are increased in 2013. The planted area for Maize was 2,838.1 acres in 2013 compared to 1713.3 acres in 2012. The total planted areas for Paddy were 34,721 acres in 2013 compared to 32,153 acres in 2012. The total planted areas for Sweet Potatoes increased from 4,538.3 in 2012 to 7,665.2 in 2013. The crops that the planted area went down in 2013 from 2012 were Sorghum, cassava, banana, Yams and Tania. Table 4.1.3 illustrates more information on cultivation area for various crops from 2009 to 2013.

### Production of Food Crops

The production of food crops including Maize, Paddy, and Sweet Potatoes increased in 2013. Maize increases by 65.6 percent, Paddy by 42.8 percent, Sweet potatoes by 68.9 percent, and groundnut by 57.9 percent. Other crops had shown too decreased in production such as Tania by 7.1 percent, Sorghum by 53.3 percent, Cassava by 14.4 percent, Banana by 30.2 percent, and Yams by 34.0 percent (table 4.1.3).

**Table 4.1.3: Area Planted by Food Crops, 2009- 2013**

Crops	Acres				
	2009	2010	2011	2012	2013p
Maize	4,023.5	6,224.0	6,562.3	1,713.3	2,838.13
Sorghum	1,133.0	1,488.0	1,347.1	1,274.5	593.5
Paddy	26,962.5	29,597.2	29,677.0	32,153.9	34,721
Cassava	33,212.9	39,072.1	46,566.0	32,721.1	27,995.28
Banana	9,161.2	14,608.3	13,781.3	12,241.8	8,544.7
Sweet potatoes	10,171.5	8,421.9	13,245.0	4,538.3	7,665.23
Yams	2,843.2	1,497.4	842.4	712.8	470.3
Tania	1,540.3	38.8	96.8	1,071.2	994.75
Groundnuts	667.6	892.8	834.8	848.5	1,339.25
Pigeon peas	709.8	157.8	317.5	198.3	205.4
Cowpeas/ Green grams	3,483.6	2,225.5	2,417.8	793.4	2,137.9

Source: Ministry of Agriculture and Natural Resources.

Table 4.1.4: Quantity and Value of Production of Food Crops, 2009- 2013

(Values in Million Tanzanian Shillings)

Crop	2009		2010		2011		2012		2013p	
	Tons	Value	Tons	Value	Tons	Value	Tons	Value	Tons	Value
Maize	2,063	1,022	3,112	1,862	3,281	1,963	857	510	1,419	874
Sorghum	457	86	572	390	512	349	484	247	226	119
Paddy	26,980	16,553	21,014	1,801	23,702	2,031	6,372	4,688	33,655	25,645
Cassava	195,674	43,119	229,284	57,882	273,342	69,004	192,073	50,767	164,332	45,027
Banana	100,873	43,355	102,258	46,502	110,250	50,136	97,935	50,500	68,358	36,503
Sweet potatoes	53,596	10,627	58,953	11,690	92,715	18,383	31,768	7,766	53,657	13,575
Yams	11,373	4,845	7,487	4,157	4,212	2,338	3,564	1,820	2,352	1,244
Tania	5,883	3,995	6443	3,947	4,940	3,026	4,092	3,333	3,800	3,203
Groundnuts	320	345	432	466	401	433	407	527	643	862
Pigeon peas	2,292	1,334	510	497	1,026	1,000	641	447	663	479
Cowpeas/ Green gram	1,394	842	1,103	1,122	1,177	1,197	317	230	1,129	801

Source: Ministry of Agriculture and Natural Resources.

## Forestry Products

Table 4.1.5 shows an increasing of forestry products in 2013 compared in 2012 for some products except Building Poles (Nguzo), Charcoal and Firewood. The volume of forest products namely Beams increased by 9.5 percent, Poles (Mapau) by 6.0 percent and Withes (Fito) by 30.9 percent while Building Poles (Nguzo) decreased by 11.2 percent, and Firewood by 0.4.

**Table 4.1.5: Quantity and Value of Forest Products, 2009- 2013**

(Value '000' Tanzanian Shillings)

Description	Unit	2009		2010		2011		2012		2013p	
		Quantity	Value	Quantity	Value	Quantity	Value	Quantity	Value	Quantity	Value
Beam (Boriti)	M <sup>3</sup>	1,121	25,190	2,219	49,873	1,254	28,186	1,477	33,182	1,618	36,365
Building Poles (Nguzo)	M <sup>3</sup>	4,037	571,879	4,673	662,010	4,704	666,443	5,578	790,245	4,953	701,632.5
Medium Poles (Mapau)	M <sup>3</sup>	1,482	96,328	829	53,877	2,191	142,441	3,227	209,781	3,422.2	222,445
Firewood (Kuni)	M <sup>3</sup>	15,429	524,577	17,281	587,539	17,592	598,131	19,138	650,706	19,067	648,271
Withes (Fito)	M <sup>3</sup>	2,745	54,900	2,115	42,300	2,855	57,099	2,654	68,223	3,475	69,501
Charcoal (Makaa)	Tons	1,791	304,326	1,939	329,548	1,983	337,030	2,116	359,761	2,122	360,788.3

Sources: Department of Forestry and Non-Renewable Resources

## Fish Catches by district

Table 4.1.6 shows the volume of fish catches by district in Zanzibar. In 2013 the fish catches increased by 4.4 percent and this was attributed to the growth of fish catches from Kaskazini 'A' which increased by 5.2 percent, Kati by 1.7 percent, Mjini by 2.8 percent, Magharibi by 7.1 percent, Wete by 21.9 percent, Micheweni by 5.2 percent, chakechake by 11.6 percent and Mkoani increased by 6.3 percent. While other District has shown to decrease include Kaskazini 'B' by 15.2 percent and Kusini by 14.7 percent. The increase in the volume of the fish catches in Zanzibar contributed by increasing in the volume in Unguja by 1.2 percent and Pemba by 10.5 percent.

**Table 4.1.6: Estimated Fish Catches and Value by District, 2009- 2013**

(Value '000' Tanzanian Shillings)

District	2009		2010		2011		2012		2013p	
	Tons	Value	Tons	Value	Tons	Value	Tons	Value	Tons	Value
Kaskazini 'A'	3,336	6,303,433	3340	7,945,353	3,388	10,623,273	3,397	12,042,629	3,573	13,221,860
Kaskazini 'B'	330	643,299	345	805,787.80	669	1,990,750	967	3,368,812	820	2,908,878
Kati	1535	2963571	1598	3,877,625	1,887	5,783,221	1,982	72,270,422	2,016	7,475,652
Kusini	1,796	3,278,012	1799	4315569	2,537	7,723,597	2,671	10,511,726	2,278	8,640,241
Mjini	8,063	15,089,781	8065	19877987	8,524	24,708,157	8,216	28,175,912	8,442	30,958,395
Magharibi	1,406	2,706,974	1505	3,599,954	1,955	5,855,644	1,977	6,630,103	2,316	8,468,061
<b>Total Unguja</b>	<b>16,466</b>	<b>30,985,070</b>	<b>16652</b>	<b>40,422,277</b>	<b>18,960</b>	<b>56,684,642</b>	<b>19,212</b>	<b>67,999,604</b>	<b>19,445</b>	<b>71,673,087</b>
Wete	2,169	4,090,550	1973	4,479,133	2,467	7,276,926	2,302	7,862,023	2,807	9,863,693
Micheweni	1,969	3,703,383	2,201	5232010	2,200	6,448,317	2,619	8,922,648	2,754	9,867,807
Chakechake	1,372	2,624,809	1,489	3,583,135	1,681	4,984,541	1,806	6,086,933	2,016	7,380,110
Mkoani	3,421	6,310,264	3,378	8,067,755	3,451	10,273,394	3,471	12,309,784	3,690	13,088,243
<b>Total Pemba</b>	<b>8,931</b>	<b>16,729,006</b>	<b>9,041</b>	<b>21,362,033</b>	<b>9,799</b>	<b>28,983,177</b>	<b>10,199</b>	<b>35,181,387</b>	<b>11,267</b>	<b>40,199,852</b>
<b>ZANZIBAR</b>	<b>25,397</b>	<b>47,714,076</b>	<b>25,693</b>	<b>61,784,310</b>	<b>28,759</b>	<b>85,667,819</b>	<b>29,411</b>	<b>103,180,992</b>	<b>30,712</b>	<b>111,872,940</b>

Source: Ministry of Livestock and Fisheries

### **Fish Catches**

Table 4.1.7 Portray the Estimated Fish Catch by Species, Quantity and values from 2009 to 2013, The production of fish catch in 2013 increased for some of Species, the production of Spine foot increased by 10.0 percent , Emperors by 3.3 percent , Groupers by 4.1 percent , Surgeon fish by 2.6 percent , Mullet by 4.9 percent , Anchovies by 5.0 percent , Sardine by 7.1 percent , Mackerels by 6.7 percent , Travellys by 5.8 percent , Yellow fin tuna by 2.9 percent , Sword fish by 5.7 percent , King fish by 11.7 percent , Barracuda by 6.2 percent , Shark/Rays by 3.9 percent , Octopus/Squid by 12.1 percent Lobsters by 0.8 percent and others by 7.8 percent.

**Table 4.1.7: Estimated Fish Catches and Value by Species, 2009- 2013**

(Value '000' Tanzanian Shillings)

S/n	Species		2009		2010		2011		2012		2013p	
	English	Swahili	Tons	Value	Tons	Value	Tons	Value	Tons	Value	Tons	Value
1	Spine foot	Tasi	1,012	1,476,018	1,023	2,513,104	1,574	4,741,744	867	3,133,911	954	3,364,290
2	Parrot fish	Pono	1,378	2,125,814	1,395	3,590,785	1,472	4,563,311	1,654	5,570,262	1,612	5,265,993
3	Emperors	Changu	2,667	4,924,115	2,684	7,018,805	2,523	8,423,745	2,077	7,466,974	2,146	7,394,692
4	Groupers	Chewa	698	1,288,739	714	1,848,107	730	2,068,972	1,702	6,873,342	1,771	6,278,650
5	Goat fish	Mkundaji	864	1,424,264	881	2,330,821	1,164	3,544,174	2,486	8,499,448	2,487	8,519,002
6	Surgeon fishes	Puju/Kangaja	638	1,122,467	664	1,367,064	733	1,691,287	2,663	8,935,194	2,732	8,349,251
7	Mullet	Mkizi	347	689,086	359	811,138	803	1,921,094	1,497	5,528,220	1,571	4,992,679
8	Anchovies	Dagaa	2,446	3,316,758	2,473	4,983,718	2,026	5,411,998	1,893	6,395,039	1,987	5,891,671
9	Sardine	Sardini	1,172	1,721,074	1,199	2,537,648	1,369	3,568,048	799	2,813,031	936	2,884,290
10	Mackerels	Vibua	1,247	2,301,722	1,259	3,266,047	1,775	5,681,028	1,097	3,721,983	1,171	4,385,090
11	Trevally	Kole/Karambisi	1,297	2,770,081	1,312	3,275,045	1,246	3,657,566	1,299	4,650,819	1,374	5,161,262
12	Yellow fin tuna	Jodari/Sehewa	1,578	3,722,013	1,584	4,189,752	1,802	5,872,040	2,423	8,287,407	2,494	9,397,911
13	Sword fish	Nduaro/Mbasi	1,326	3,068,958	1,334	3,530,497	1,146	3,482,806	1,412	4,969,633	1,493	5,998,568
14	King Fish	Nguru/Kanadi	1,164	2,873,389	1,171	3,018,879	1,625	5,118,426	766	2,707,112	856	3,139,198
15	Barracuda	Mzia	1,329	2,847,757	1,344	3,243,514	1,254	3,582,429	1,427	4,955,066	1,515	4,896,531
16	Sharks/Rays	Papa/Taa	1,400	2,469,328	1,418	3,141,659	2,285	6,649,275	1,709	5,673,688	1,776	5,607,066
17	Octopus/Squid	Pweza/Ngisi	1,155	2,794,349	1,179	3,087,935	1,467	4,611,382	729	2,774,891	817	3,782,463
18	Lobsters	Kamba	393	1,316,126	396	1,232,865	912	3,052,744	1,682	5,940,715	1,695	12,562,865
19	Others	Wengine	3,282	5,462,017	3,303	6,796,927	2,853	8,025,750	1,229	4,284,257	1,326	4,001,457
	<b>Total</b>		<b>25,396</b>	<b>47,714,076</b>	<b>25,693</b>	<b>61,784,310</b>	<b>28,759</b>	<b>85,667,819</b>	<b>29,411</b>	<b>103,180,992</b>	<b>30,712</b>	<b>111,872,929</b>

Source: Ministry of Livestock and Fisheries

## **4.2 Industry Statistics**

This section highlighted industrial activities operated in Zanzibar based on small scale industries which producing domestic good, food products and beverages and many of these industries are located in urban west region, followed by other region such as North Unguja, North Pemba, South Unguja and South Pemba. Industrial Statistics presented in the tables below shows production (in quantity and values) from some selected industrial and commodities from 2009 to 2013.

### **Selected Commodities**

Statistics shows that production in selected industries in 2013 increased compared in 2012 excluding Beverages, Windows UPVC, Jewellery(Gold/Silver) which shows a decrease for the period of 2013 (Table 4.2.1). Also in terms of values, It indicate that the value increased from T.shs. 33,250,014 thousand in 2012 to T.shs 39,690,779 thousand in 2013 equivalent to an increase of 19.4 percent. The increase was attributed to the production of Wheat flour, Bread and Noodles. This is for Private Selected Industries (Table 4.2.2)

Value of production in public industries shows that in 2013 increased to Tshs 49,302,663 from Tshs 37,961,243 thousand in 2012, this is an increasing of 29.9 percent.

Production of beverages declined from 14,409,000 litres in 2012 to 12,409,000 litres in 2013 equivalent to a decline of 13.9 percent, the decline was due to low machinery productivity during 1<sup>st</sup> half of the year 2013 Jan to June and permanent closed of the factory during the last quarter of 2013.

Production of breads increased from 114,858,000 in 2012 to 127,815,000 in 2013. This increasing was attributed to increase in demand for breads in the domestic market. Production of window (UPVC) decreased from 201 Pcs in 2012 to 130 Pcs in 2013, equivalent to a decrease of more than 35.3 percent. The decrease was attributed by decrease in demand to the customers. Production of Garments (Dish Dash) increased from 2,877 Pcs in 2012 to 3,622 in 2013 the increase was largely attributed by the increase of raw materials in 2013.

**Electricity:**

The number of new customers connected to National power Grid for 2013 is highly increase compared to 2012 from 8,721 customers in 2012 to 10,684 in 2013 an increase of 22.5 percent, the increase is attributed by increase in domestic demand (Table 4.2.6).

Production of electricity increased from 223,407,000 Kwh in 2012 to 246,962,000 Kwh in 2013 the increase was due to increase in demand, In Pemba and other area of country. The value also increased to T.shs 49,069,000 thousand in 2013 from T.Shs 37,505,529 Thousand in 2012, the increase was attributed by the increase in tariff of electricity in the fourth quarter of year 2013.

**Water:**

Table 4.2.7 shows the number of Boreholes Drilled has increased tremendously from 13 Boreholes in 2012 to 72 Boreholes in 2013, the increase was attributed by implementation of several water development projects. But though the number of Boreholes has increased they have not yet started operation is still under construction.

Table 4.2.8 Water Supply and Revenue shows that the production of water is lower by 32.03 percent to its demand side in 2013. Also the data revealed that Mjini/Magharibi region is the highest recipient in revenue collection for water supply (64.62 percent) in 2013, compared to other regions.

**Private Sector Development**

In 2013 a total of 35 projects worth US \$1,061,911,408 were registered with employment potential of 1,365 people compared to 35 projects worth US \$59,069,422 with employment potential of 1,123 people in 2012.

In 2013 Hotel and Restaurants activities attracted more investors with 16 projects worth US \$196,272,350 and employment potential of 642 people. Other economic activities which attracted investors include: Manufacturing activities with 3 projects worth US \$128,140,318 and employment potential of 262 people followed by manufacturing activities with 3 projects worth US \$123,137,000 and employment potential of 170 people.

Agriculture hunting and forestry with 2 projects worth US \$1,845,250 and employment potential 82 of people other activities with 2 project each includes: Transport Storage and

Communication, Education and Tour Operation/Diving & Game Fishing all these projects worth US \$614,361,740 and potential employment of 78 people the last in the list is Fishing activity with only one (1) project worth US\$ 610,000 and potential employment of 22 people.

**Table 4.2.1: Production in Selected Private Industries (Quantity), 2009 – 2013**

<b>Production</b>	<b>Units</b>	<b>2009</b>	<b>2010</b>	<b>2011</b>	<b>2012</b>	<b>2013p</b>
Beverages***	Liters (000)	13,800	15,414	17,199	14,409	12,409
Bread	No.(000)	105,531	108,264	111,512	114,858	127,815
Wheat Flour	Tons	0	0	0	17,566	23,360
Door UPVC	No	43	125	140	95	105
Window UPVC	No	98	43	95	201	130
Video / Radio Tape	Cartons	30,742	30,648	14,517	4,646	0
Garments Dish Dash (Nguo)	Pcs	4,392	4,648	4,672	2,877	3,622
Noodles (Tambi)	Kgs	75,600	80,417	189,000	199,000	215,915
Jewellery (Gold/Silver)	Gms	9,710	9,508	8,602	8,172	6,730

Source: Office of Chief Government Statistician (OCGS)

\*\*\* Include Mineral Water, Soft drink and Juice

‘0’ No Production

**Table 4.2.2: Value of Goods Produced for Selected Private Industries, 2009 - 2013**

Value ('000'Tshs)

<b>Description</b>	<b>2009</b>	<b>2010</b>	<b>2011</b>	<b>2012</b>	<b>2013p</b>
Beverages***	6,011,838	6,766,515	7,474,718	7,461,802	5,407,886
Bread	8,443,000	8,661,142	13,939,000	14,357,250	15,976,805
Wheat Flour	0	0	0	10,956,516	17,824,268
Door UPVC	18,189	18,899	25,663	14,616	20,900
Window UPVC	72,503	5,880	16,019	22,425	25,940
Video /Radio tape	612,935	609,817	315,103	100,934	0
Garments Dish Dash (Nguo)	24,913	46,087	52,118	52,600	94,558
Noodles (Tambi))	74,928	92,480	226,800	257,150	323,873
Jewellery (Gold/Silver)	20,321	26,894	28,583	26,721	16,569
<b>Total</b>	<b>15,278,627</b>	<b>16,227,714</b>	<b>19,067,017</b>	<b>33,250,014</b>	<b>39,690,799</b>

Source: Office of Chief Government Statistician

\*\*\* Include Mineral Water ,Soft drink and Juice

'0' No Production

**Table 4.2.3: Value of Goods Produced in Public Industries, 2009 - 2013**

Value ('000' Tanzanian Shillings)

<b>Commodity</b>	<b>2009</b>	<b>2010*</b>	<b>2011</b>	<b>2012</b>	<b>2013p</b>
Clove steam Oil	7644	72,690	78,594	538,186	87,310
Essential Oil (Others)	11,375	8,254	58,571	104,899	51,377
Maintenance and spare	34,729	47,319	54,653	0	0
Printing	47,450	52,250	58,781	87,450	94,009
Electricity Distribution	25,849,558	17,491,340	35,356,448	37,230,708	49,069,967
<b>Total</b>	<b>25,950,756</b>	<b>17,671,853</b>	<b>35,607,047</b>	<b>37,961,243</b>	<b>49,302,663</b>

Source: Office of Chief Government Statistician.

Note: \* Black out of power from Dec, 2009 up to March, 2010

'0' No Production

**Table 4.2.4: Quantity of Electricity Distributed, 2009 – 2012 (KWH “000”)**

<b>Description</b>	<b>2009</b>	<b>2010*</b>	<b>2011</b>	<b>2012</b>
Commercial	13,296	18,698	17,608	19,466
Domestic	51,954	45,512	60,698	60,425
large Industry	38,135	36,509	45,194	45,260
Medium Industry	23,176	30,639	28,719	33,678
Small Industry	618	979	2,527	2,381
Street Light	371	698	935	270
TUKUZA	57,252	63,929	92,255	61,818
<b>Total</b>	<b>184,801</b>	<b>196,866</b>	<b>247,936</b>	<b>223,407</b>

Source: Zanzibar Electricity Corporation

Note: \* Black out of power from Dec, 2009 up to March, 2010.

‘0’ No Production

**Table 4.2.5: Value of Electricity Distributed, 2009 - 2013 (Tshs “000”)**

<b>Description</b>	<b>2009</b>	<b>2010*</b>	<b>2011</b>	<b>2012</b>
Commercial	2,282,986	1,857,699	3,443,229	3,125,347
Domestic	5,634,536	3,685,301	7,282,752	7,431,925
Large Industry	4,964,430	3,219,954	6,598,362	6,778,206
Medium Industry	4,839,730	3,323,285	6,166,052	6,725,902
Small Industry	140,027	113,326	506,779	467,993
Street Lights	186,455	69,011	355,841	259,517
TUKUZA	7,801,393	5,222,767	11,003,433	12,715,639
<b>Total</b>	<b>25,849,558</b>	<b>17,491,343</b>	<b>35,356,448</b>	<b>37,504,529</b>

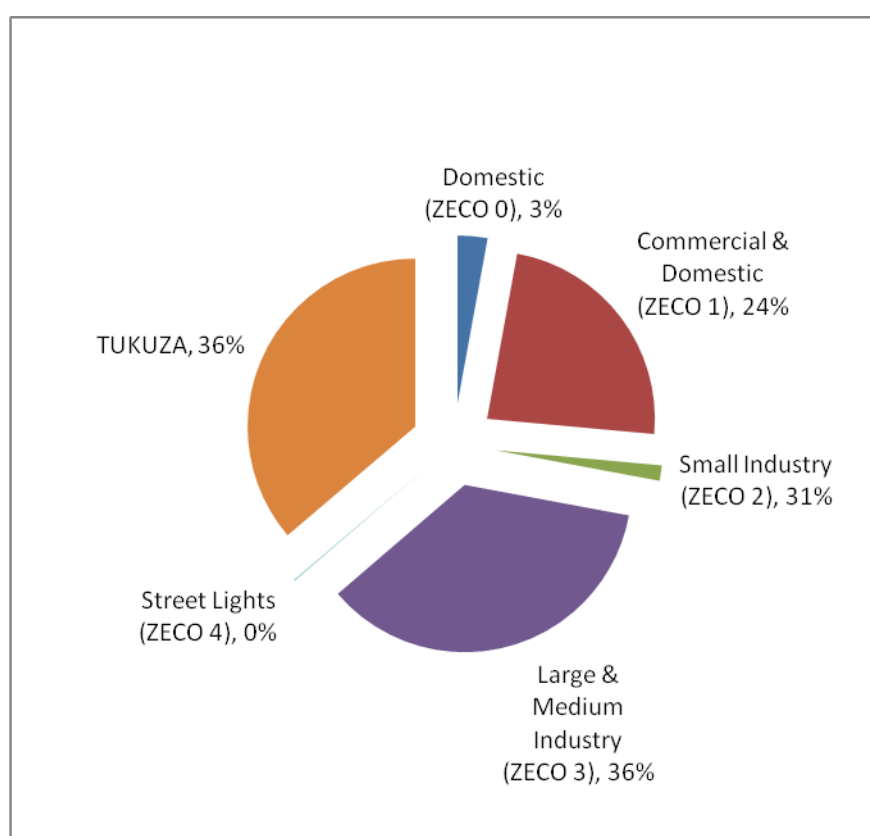
Source: Zanzibar Electricity Corporation

Note: \* Black out of power from Dec, 2009 up to March, 2010.

**Table 4.2.4a: Quantity of Electricity Distributed, 2013** (KWH “000”)

Description	2013p
Domestic (ZECO 0)	7,098
Commercial & Domestic (ZECO 1)	58,202
Small Industry (ZECO 2)	3,668
Large & Medium Industry (ZECO 3)	88,396
Street Lights (ZECO 4)	155
TUKUZA	89,443
<b>Total</b>	<b>246,962</b>

Source: Zanzibar Electricity Corporation (ZECO)



Source: Zanzibar Electricity Corporation (ZECO)  
**Figure 4.2.1: Quantity of Electricity Distributed, 2013**

**Table 4.2.5a: Value of Electricity Distributed, 2013**

(T. Tshs “000”)

<b>Description</b>	<b>2013p</b>
Domestic ( <b>ZECO 0</b> )	853,798
Commercial & Domestic ( <b>ZECO 1</b> )	10,972,544
Small Industry ( <b>ZECO 2</b> )	739,911
Large & Medium Industry ( <b>ZECO 3</b> )	15,242,248
Street Lights ( <b>ZECO 4</b> )	43,815
TUKUZA	21,217,651
<b>Total</b>	<b>49,069,967</b>

Source: Zanzibar Electricity Corporation (ZECO)

**Table 4.2.6: Total Number of New Customers Connected to National 2009 - 2013**

<b>Area</b>	<b>2009</b>	<b>2010*</b>	<b>2011</b>	<b>2012</b>	<b>2013p</b>
Unguja	5,240	1,954	4,148	7,190	7,919
Pemba	1,171	1,121	897	1,531	2,765
<b>Zanzibar</b>	<b>6,411</b>	<b>3,075</b>	<b>5,045</b>	<b>8,721</b>	<b>10,684</b>

Source: Zanzibar Electricity Corporation (ZECO)

Note: \* ZECO (No. of new Customers Connected to the grid due to the power black out of power from Dec 2009 Up to March, 2010.

**Table 4.2.7: Total Number of Boreholes Drilled from 2009 – 2013**

<b>Region</b>	<b>2009</b>	<b>2010</b>	<b>2011</b>	<b>2012</b>	<b>2013p</b>
Kaskazini Unguja	2	2	1	1	8
Kusini Unguja	2	1	4	3	19
Mjini Magharibi	2	1	4	6	20
Kaskazini Pemba	1	1	0	1	11
Kusini Pemba	2	1	0	2	14
<b>Total</b>	<b>9</b>	<b>6</b>	<b>9</b>	<b>13</b>	<b>72</b>

Source: Zanzibar Water Authority (ZAWA)

**Table 4.2.8: Water Supply and Revenue Collection by Region, 2013**

<b>Region</b>	<b>Total Water Production (Cubic meter)</b>	<b>Estimated Water Demand (Cubic meter)</b>	<b>Deficit in Demand</b>	<b>Revenue Collection Tshs</b>
Kaskazini Unguja	4,829,252	10,585,000	54.4	376,670,422
Kusini Unguja	4,133,065	7,300,000	43.4	170,691,767
Mjini Magharibi	15,548,998	19,710,000	21.1	999,825,308
Kaskazini Pemba	5,185,761	6,884,363	24.7	300,852,299
Kusini Pemba	6,998,526	9,510,360	26.4	193,122,271
<b>Total</b>	<b>36,695,602</b>	<b>53,989,723</b>	<b>32.03</b>	<b>2,041,162,067</b>

Source: Zanzibar Water Authority (ZAWA)

**Table 4.2.9: Approved Projects From 2009 - 2013**

<b>Industry</b>	<b>2009</b>	<b>2010</b>	<b>2011</b>	<b>2012</b>	<b>2013p</b>	<b>Total</b>
A - Agriculture hunting and forestry	1	1	3	2	2	9
B - Fishing	0	0	0	0	1	1
D - Manufacturing	3	1	9	3	3	19
G - Wholesale and retail trade	8	1	0	0	0	9
H - Hotels and Restaurant	15	25	22	13	16	91
I - Transport storage and communications	2	1	4	1	2	10
J - Financial intermediation	1	0	0	0	0	1
K - Real Estate Renting and Business Activities	5	0	3	3	7	18
M - Education	0	1	1	1	2	5
Tour Operation/Diving & Game Fishing	0	3	1	1	2	7
<b>Total</b>	<b>35</b>	<b>33</b>	<b>47</b>	<b>25</b>	<b>35</b>	<b>175</b>

Source: Zanzibar Investment Promotion Authority (ZIPA)

**Table 4.2.10: Approved Employment from 2009 - 2013**

<b>Industry</b>	<b>2011</b>	<b>2012</b>	<b>2013p</b>
A - Agriculture hunting and forestry	662	80	82
B - Fishing	0	0	22
D - Manufacturing	377	345	170
G - Wholesale and retail trade	137	0	0
H - Hotels and Restaurant	970	554	642
I - Transport storage and communications	35	13	101
J - Financial intermediation	0	0	0
K - Real Estate Renting and Business Activities	50	56	262
M - Education	30	35	35
Tour Operation/Diving & Game Fishing	46	30	51
<b>Total</b>	<b>2,307</b>	<b>1,123</b>	<b>1,365</b>

Source: Zanzibar Investment Promotion Authority (ZIPA)

**Table 4.2.11: Approved Capital 2009 – 2013**

<b>(Value in USD)</b>					
<b>Industry</b>	<b>2009</b>	<b>2010</b>	<b>2011</b>	<b>2012</b>	<b>2013p</b>
A - Agriculture, Hunting and Forestry	3,900	1,402,335	2,302,325	700,000	1,845,250
B - Fishing	0	0	0	0	610,000
D - Manufacturing	3,858	674,840	7,483,700	21,630,516	123,137,000
G - Wholesale and Retail trade	9,509	1,139,250	4,707,200	0	0
H - Hotels and Restaurant	110,604	109,903,200	48,598,000	32,086,906	196,272,350
I - Transport storage and Communications	5,400	0	56,500,000	500,000	610,000,000
J - Financial intermediation	201	0	0	0	0
K - Real Estate Renting and Business Activities	137,450	0	41,100,000	1,900,000	128,140,318
M - Education	0	200,000	168,300	750,000	2,000,000
Tour Operation/Diving & Game Fishing	0	1,891,992	705,000	502,000	2,361,740
<b>Total</b>	<b>270,922</b>	<b>115,211,617</b>	<b>161,564,525</b>	<b>59,069,422</b>	<b>1,061,911,4</b>

Source: Zanzibar Investment Promotion Authority (ZIPA)

## **SOCIAL STATISTICS**

### **5.1 Education Statistics**

Currently the Government of Zanzibar provides free education for all citizens from standard 1 to form 2. In accordance with the 2006 Education Policy, the government is transitioning to system of compulsory education from pre-primary until Form 4. Currently Zanzibar is partway through the transition to the new education system. Access at the pre-primary level is being increased and initiatives are being taken to increase the transition rate from Form 2 to Form 3 to enable the introduction of four years of compulsory secondary education. Presently a high failure rate in the Form 2 examinations prevents many students progressing to Form 3.

Zanzibar has made significant progress in increasing the number of students attending basic education. There has been a 12% increase in Primary education in the past 5 years, from 220,819 in 2009 to 247,352 in 2013. At Ordinary Secondary level (Form 1 -Form 4) enrolment has been roughly stagnant, falling by 1.6% from 77,958 in 2009 to 76,706 in 2013. moving beyond basic education progress has been less positives with a 54% decrease in enrolment at this level between 2009 and 2013. At all levels of education, excepting the pre-primary level, the government is the dominant education provider.

Increase in enrolment has been complimented by investments in school infrastructure and the capacity of teachers training institutions. The number of government schools offering either primary or secondary education increased from 374 in 2012 to 392 in 2013. For private schools there was an increase from 74 in 2012 to 94 in 2013. The number of technical schools and universities has remained the same since 2009 with the exception of the introduction of a new private vocational training school and one new government teacher training college.

**Student Teacher ratio** is the number of students enrolled divided by the number school's Teachers regardless of their teaching assignment. This is a very important ratio as it shows the strength of student-teacher-contact hours. The higher the ratio the less student-teacher-contact hours and hence there is less student-teacher consultations. It also means that there is higher teaching load to teachers and they lose the required time to effectively supervise students' work. The teacher student ratio is therefore among the

important indicators of quality of education. The data shows that Students teacher ratio decreased from 28 students per teacher in 2012 to 25 students per teacher in 2013. The result for education statistics are mainly presented from table 5.1.1 to table 5.1.25 the data shows that the number of primary public schools which offers basic education increased from 194 schools in 2012 to 234 schools in 2013, the number of secondary schools was increased from 107 in 2012 to 144 schools in 2013 .

On other hand the number of private schools, revealed that the total number of primary rose by 8 schools from 2012 to 2013 which indicate the increased of 23 percent (from 39 schools in 2012 to 47 schools in 2013) meanwhile the number of private secondary schools was double increase from 7 in 2009 to 15 schools in 2013 as compared to the number of technical colleges, business biased schools and universities which remain constant.

The total student enrolment in public schools (STDI) rose from 38,208 in 2012 to 39,222 pupils in 2013, so this represents an increase of 2.6 percent or 1014 students. The total number of students in public schools (provide basic education) increase from 225,029 students in 2012 to 230,377 students in 2013 which indicates an increase of 2.3 percent or 5,348 students for primary public schools, however the number of students in secondary schools was slightly decrease from 72,025 in 2012 to 70,677 in 2013 which indicates decrease by 1348 students.

The examination results for F.II students in 2013 shows that the total number of candidate who sat for F.II examination in 2013 was 19,322 students. A total of 11,483 students passed and 7,839 students fail approximately 40.6 percent.

The examination result for F.IV students in 2013 show that, the number of students in public schools passed for IV examination results increased from 53.1 percent in 2012 to 68.48 percent in 2013 also the number of student passed for grade I increase from 16 in 2012 to 130 in 2013 (0.1 percent in 2012 to 1.1 percent in 2013) while those who passed with grade II,III and IV increased from 39, 39 and 2585 students in 2012 to 534,1289 and 6157 students in 2013 respectively.

Advance level (Form VI) examination results show to decrease in 2013 (74.0percent) as compared to (79.1percent) in 2012. The number of student who passed grade I and II decrease from 17 to 1 student and from 87 to 40 student (passed grade II) from 2012 to 2013 respectively.

**(a) Education Facilities**

**Table 5.1.1: Public and Private Education Facilities by Category, 2009- 2013**

(Number)					
Category	2009	2010	2011	2012	2013p
Nursery Schools	232	238	242	253	278
Primary Schools	167	185	200	194	234
Primary & Middle Schools	123	114	121	137	108
Secondary Schools	95	113	117	107	144
Technical Biased Schools	3	3	3	3	3
Islamic Biased Schools	2	2	2	2	2
Technical College	1	1	1	1	1
Teachers Training College	2	1	1	3	3
Science Biased Schools	3	4	4	4	4
Business Biased Schools	2	2	2	2	2
French Language Biased School	0	0	0	1	1
Vocational Training Schools	7	7	7	7	7
Institutes	3	3	3	3	3
Universities	3	3	3	3	3

Source: Ministry of Education and Vocational Training

**Table 5.1.2: Public Education Facilities by Category, 2009- 2013**

(Number)					
Category	2009	2010	2011	2012	2013
Nursery Schools	27	27	29	30	34
Primary Schools	131	148	156	155	187
Primary & Middle Schools	101	92	93	110	76
Secondary Schools	88	105	108	99	129
Technical Biased Schools	2	2	2	2	2
Islamic Biased Schools	2	2	2	2	2
Technical College	1	1	1	1	1
Teachers Training College	2	1	1	3	3
Science Biased Schools	3	3	3	3	3
Business Biased Schools	2	2	2	2	2
French Language Biased	0	0	0	1	1
Vocational Training Schools	3	3	3	3	3
Institutes	3	3	3	3	3
Universities	1	1	1	1	1

Source: Ministry of Education and Vocational Training

**Table 5.1.3: Private Education Facilities by Category, 2009- 2013**

(Number)

Category	2009	2010	2011	2012	2013
Nursery Schools	205	211	213	223	244
Primary Schools	36	37	44	39	47
Primary & Middle Schools	22	22	28	27	32
Secondary Schools	7	8	9	8	15
Technical Biased Schools	1	1	1	1	1
Science Biased Schools	1	1	1	1	1
Vocational Training Schools	3	3	4	4	4
University	2	2	2	2	2

Source: Ministry of Education and Professional Training

**Table 5.1.4: STD I Enrolment in Public Schools by Sex, 2009- 2013**

Sex	2009	2010	2011	2012 p	2013 p
Male	15,769	16,615	15,565	19,524	20,008
Female	15,701	16,368	15,581	18,684	19,214
<b>Total</b>	<b>31,470</b>	<b>32,983</b>	<b>31,146</b>	<b>38,208</b>	<b>39,222</b>
<b>Percentage Change</b>	<b>0.2</b>	<b>4.8</b>	<b>-5.5</b>	<b>18.5</b>	<b>2.6</b>

Source: Ministry of Education and Professional Training

**Table 5.1.5: Admission to STD 1 Public Schools by District, 2009- 2013**

(Number)

District	2009	2010	2011	2012	2013
Kaskazini 'A'	3,876	3,037	3,638	2,715	3,241
Kaskazini 'B'	1,468	1,703	1,807	1,703	1,892
Kati	1,970	2,370	2,360	2,306	2,345
Kusini	973	1,372	1,153	1,034	1,031
Mjini	5,037	4,529	4,298	4,255	4,114
Magharibi	7,247	7,122	5,621	8,541	9,037
Wete	2,541	3,298	3,330	3,853	3,772
Micheweni	2,913	2,974	2,906	2,938	3,584
Chakechake	2,790	3,540	2,821	3,265	3,207
Mkoani	2,655	3,038	3,212	3,535	3,480
<b>Total</b>	<b>31,470</b>	<b>32,983</b>	<b>28,328</b>	<b>34,145</b>	<b>35,703</b>

Source: Ministry of Education and Vocational Training

**Table 5.1.6: Admission to STD 1 Private School by Sex, 2009- 2013.**

<b>Sex</b>	<b>2009</b>	<b>2010</b>	<b>2011</b>	<b>2012</b>	<b>2013 p</b>
Male	1,163	1,185	1,441	1,602	1750
Female	1,126	1,253	1,593	1,711	1890
<b>Total</b>	<b>2,289</b>	<b>2,438</b>	<b>3,034</b>	<b>3,313</b>	<b>3640</b>
<b>Percentage Change</b>	<b>22.5</b>	<b>6.5</b>	<b>24.4</b>	<b>9.2</b>	<b>9.0</b>

Source: Ministry of Education and Vocational Training

**Table 5.1.7: Pupils in Public and Private Primary Schools, 2009- 2013.**

(Number)

STD	2009			2010			2011			2012			2013p		
	Male	Female	Total	Male	Female	Total	Male	Female	Total	Male	Female	Total	Male	Female	Total
I	18,934	18,040	36,974	19,580	19,163	38,743	21,166	20,097	41,263	21,126	20,395	41,521	21,758	21,104	42,862
II	18,183	17,717	35,900	18,071	17,525	35,596	18,495	18,180	36,675	19,399	18,883	38,282	20,183	19,804	39,987
III	17,264	17,354	34,618	17,358	17,098	34,456	17,662	17,268	34,930	17,605	17,560	35,165	18,591	18,529	37,120
IV	15,054	15,055	30,109	16,543	16,810	33,353	17,433	17,106	34,539	16,831	16,774	33,605	16,737	17,383	34,120
V	14,674	14,804	29,478	14,571	14,743	29,314	15,857	16,650	32,507	16,451	16,624	33,075	16,414	16,378	32,792
VI	14,033	14,973	29,006	14,621	14,756	29,377	14,834	14,774	29,608	15,822	16,340	32,162	15,870	16,164	32,034
VII	11,967	12,767	24,734	12,117	13,856	25,973	13,621	14,547	28,168	<b>12,660</b>	13,652	26,312	13,507	14,930	28,437
<b>Total</b>	<b>110,109</b>	<b>110,710</b>	<b>220,819</b>	<b>112,861</b>	<b>113,951</b>	<b>226,812</b>	<b>119,068</b>	<b>118,622</b>	<b>237,690</b>	<b>119,894</b>	<b>120,228</b>	<b>240,122</b>	<b>123,060</b>	<b>124,292</b>	<b>247,352</b>

Source: Ministry of Education and Vocational Training

**Table 5.1.8: Pupils in Public Primary Schools, 2009- 2013.**

(Number)

STD	2009			2010			2011			2012			2013p		
	Male	Female	Total	Male	Female	Total	Male	Female	Total	Male	Female	Total	Male	Female	Total
I	17,771	16,914	34,685	18,395	17,910	36,305	19,725	18,504	38,229	19,524	18,684	38,208	20,008	19,214	39,222
II	17,146	16,761	33,907	17,017	16,512	33,529	17,275	16,890	34,165	18,207	17,510	35,717	18,596	18,174	36,770
III	16,391	16,426	32,817	16,389	16,140	32,529	16,495	16,156	32,651	16,406	16,321	32,727	17,309	17,110	34,419
IV	14,212	14,278	28,490	15,699	15,895	31,594	16,378	16,124	32,502	15,840	15,748	31,588	15,605	16,183	31,788
V	13,978	14,131	28,109	13,820	14,001	27,821	15,008	15,702	30,710	15,510	15,679	31,189	15,427	15,331	30,758
VI	13,373	14,378	27,751	13,965	14,146	28,111	14,026	14,024	28,050	15,062	15,528	30,590	15,043	15,337	30,380
VII	11,497	12,331	23,828	11,598	13,297	24,895	12,999	13,929	26,928	12,010	13,000	25,010	12,861	14,179	27,040
<b>Total</b>	<b>104,368</b>	<b>105,219</b>	<b>209,587</b>	<b>106,883</b>	<b>107,901</b>	<b>214,784</b>	<b>111,906</b>	<b>111,329</b>	<b>223,235</b>	<b>112,559</b>	<b>112,470</b>	<b>225,029</b>	<b>114,849</b>	<b>115,528</b>	<b>230,377</b>

Source: Ministry of Education and Vocational Training

**Table 5.1.9: Pupils in Private Primary Schools by Grade and Gender, 2009- 2013.**

(Number)

STD	2009			2010			2011			2012			2013p		
	Male	Female	Total	Male	Female	Total	Male	Female	Total	Male	Female	Total	Male	Female	Total
I	1,163	1,126	2,289	1,185	1,253	2,438	1,441	1,593	3,034	1,602	1,711	3,313	1,750	1,890	3,640
II	1,037	956	1,993	1,054	1,013	2,067	1,220	1,290	2,510	1,192	1,373	2,565	1,586	1,631	3,217
III	873	928	1,801	969	958	1,927	1,167	1,112	2,279	1,199	1,239	2,438	1,282	1,419	2,701
IV	842	777	1,619	844	915	1,759	1,055	982	2,037	991	1,026	2,017	1,133	1,200	2,333
V	696	673	1,369	751	742	1,493	849	948	1,797	941	945	1,886	987	1,047	2,034
VI	660	595	1,255	656	610	1,266	808	750	1,558	760	812	1,572	827	827	1,654
VII	470	436	906	519	559	1,078	622	618	1,240	650	652	1,302	646	751	1,397
<b>Total</b>	<b>5,741</b>	<b>5,491</b>	<b>11,232</b>	<b>5,978</b>	<b>6,050</b>	<b>12,028</b>	<b>7,162</b>	<b>7,293</b>	<b>14,455</b>	<b>7,335</b>	<b>7,758</b>	<b>15,093</b>	<b>3,211</b>	<b>8,765</b>	<b>16,976</b>

Source: Ministry of Education and Vocational Training

**Table 5.1.10: Distribution of Pupil in Public and Private Primary Schools by Grade and Gender, 2009- 2013.**

STD	2009		2010		2011		2012		2013p	
	Male	Female	Male	Female	Male	Female	Male	Female	Male	Female
I	51.2	48.8	50.5	49.5	51.3	48.7	50.9	49.1	50.8	49.2
II	50.6	49.4	50.8	49.2	50.4	49.6	50.7	49.3	50.5	49.5
III	49.9	50.1	50.4	49.6	50.6	49.4	50.1	49.9	50.1	49.9
IV	50.0	50.0	49.6	50.4	50.5	49.5	50.1	49.9	49.1	50.9
V	49.8	50.2	49.7	50.3	48.8	51.2	49.7	50.3	50.1	49.9
VI	48.4	51.6	49.8	50.2	50.1	49.9	49.2	50.8	49.5	50.5
VII	48.4	51.6	46.7	53.3	48.4	51.6	48.1	51.9	47.5	52.5
<b>Total</b>	<b>49.9</b>	<b>50.1</b>	<b>49.8</b>	<b>50.2</b>	<b>50.1</b>	<b>49.9</b>	<b>49.9</b>	<b>50.1</b>	<b>49.8</b>	<b>50.2</b>

Source: Ministry of Education and Vocational Training

**Table 5.1.11: Pupils in Public and Private Secondary Schools, 2009- 2013.**

(Number)

Form	2009			2010			2011			2012			2013p		
	Male	Female	Total	Male	Female	Total	Male	Female	Total	Male	Female	Total	Male	Female	Total
I	12,821	13,258	26,079	12,403	12,952	25,355	12,699	14,216	26,915	13,258	14,063	27,321	12,819	13,654	26,473
II	11,672	10,856	22,528	10,908	12,620	23,528	10,842	12,177	23,019	10,856	12,931	23,787	10,642	12,864	23,506
III	8,192	6,191	14,383	6,431	7,383	13,814	6,280	7,932	14,212	6,191	7,153	13,344	5,851	8,157	14,008
IV	4,370	6,056	10,426	7,981	9,330	17,311	6,210	7,315	13,525	6,056	7,657	13,713	5,761	6,960	12,721
<b>Total</b>	<b>37,055</b>	<b>36,361</b>	<b>73,416</b>	<b>37,723</b>	<b>42,285</b>	<b>80,008</b>	<b>36,031</b>	<b>41,640</b>	<b>77,671</b>	<b>36,361</b>	<b>41,804</b>	<b>78,165</b>	<b>35,073</b>	<b>41,635</b>	<b>76,708</b>

Source: Ministry of Education and Vocational Training

**Table 5.1.12: Pupils in Public Secondary School, 2009- 2013.**

(Number)

Form	2009			2010			2011			2012			2013p		
	Male	Female	Total	Male	Female	Total	Male	Female	Total	Male	Female	Total	Male	Female	Total
I	12,329	12,986	25,315	11,923	12,408	24,331	12,090	13,528	25,618	12,528	13,288	25,816	12,131	12,798	24,929
II	11,234	12,367	23,601	10,354	11,962	22,316	10,187	11,442	21,629	10,146	12,171	22,317	9,964	12,021	21,985
III	7,752	9,120	16,872	5,968	6,786	12,754	5,532	7,062	12,594	5,494	6,417	11,911	5,148	7,293	12,441
IV	3,927	3,937	7,864	7,451	8,795	16,246	5,641	6,543	12,184	5,322	6,836	12,158	5,137	6,185	11,322
<b>Total</b>	<b>35,242</b>	<b>38,410</b>	<b>73,652</b>	<b>35,696</b>	<b>39,951</b>	<b>75,647</b>	<b>33,450</b>	<b>38,575</b>	<b>72,025</b>	<b>33,490</b>	<b>38,712</b>	<b>72,202</b>	<b>32,380</b>	<b>38,297</b>	<b>70,677</b>

Source: Ministry of Education and Vocational Training

**Table 5.1.13: Pupils in Private Secondary Schools, 2009- 2013**

(Number)

Form	2009			2010			2011			2012			2013p		
	Male	Female	Total	Male	Female	Total	Male	Female	Total	Male	Female	Total	Male	Female	Total
I	492	647	1,139	480	544	1,024	609	688	1,297	730	775	1,505	688	856	1,544
II	438	646	1,084	554	658	1,212	655	735	1,390	710	760	1,470	678	841	1,519
III	440	572	1,012	463	597	1,060	748	870	1,618	697	736	1,433	703	864	1,567
IV	443	628	1,071	530	535	1,065	569	772	1,341	734	821	1,555	624	775	1,399
<b>Total</b>	<b>1,813</b>	<b>2,493</b>	<b>4,306</b>	<b>2,027</b>	<b>2,334</b>	<b>4,361</b>	<b>2,581</b>	<b>3,065</b>	<b>5,646</b>	<b>2,871</b>	<b>3,092</b>	<b>5,963</b>	<b>2,693</b>	<b>3,336</b>	<b>6,029</b>

Source: Ministry of Education and Vocational Training

**Table 5.1.14: Distribution of Pupils in Public and Private Secondary Schools by Sex and Form, 2009- 2013**

(Percent)

Form	2009		2010		2011		2012		2013p	
	Male	Female	Male	Female	Male	Female	Male	Female	Male	Female
I	48.5	51.5	48.9	51.1	47.2	52.8	48.5	51.5	48.4	51.6
II	47.3	52.7	46.4	53.6	47.1	52.9	45.6	54.4	45.3	54.7
III	45.8	54.2	46.6	53.4	44.2	55.8	46.4	53.6	41.8	58.2
IV	48.9	51.1	46.1	53.9	45.9	54.1	44.2	55.8	45.3	54.7
<b>Total</b>	<b>47.5</b>	<b>52.5</b>	<b>47.1</b>	<b>52.9</b>	<b>46.4</b>	<b>53.6</b>	<b>46.5</b>	<b>53.5</b>	<b>45.7</b>	<b>54.3</b>
<b>No. of Students</b>	<b>37,055</b>	<b>40,903</b>	<b>37,723</b>	<b>42,285</b>	<b>36,031</b>	<b>41,640</b>	<b>36,361</b>	<b>41,804</b>	<b>35,073</b>	<b>41,635</b>

Source: Ministry of Education and Vocational Training

**Table 5.1.15: Pupils in Public and Private Advanced Secondary Schools by Sex and Form, 2009- 2013**

(Number)

	2009			2010			2011			2012			2013p		
	Male	Female	Total	Male	Female	Total	Male	Female	Total	Male	Female	Total	Male	Female	Total
<b>Form V:</b>															
Public	1,056	1,029	2,085	930	789	1,719	983	1,030	2,013	671	643	1,314	478	544	1022
Private	128	135	263	108	134	242	120	138	258	59	57	116	50	88	138
<b>Total</b>	<b>1,184</b>	<b>1,164</b>	<b>2,348</b>	<b>1,038</b>	<b>923</b>	<b>1,961</b>	<b>1,103</b>	<b>1,168</b>	<b>2,271</b>	<b>730</b>	<b>700</b>	<b>1,430</b>	<b>528</b>	<b>632</b>	<b>1160</b>
<b>Form VI:</b>															
Public	1,241	902	2,143	1015	893	1908	880	807	1,687	936	941	1,877	516	491	1007
Private	158	195	353	114	108	222	61	163	224	114	111	225	45	38	83
<b>Total</b>	<b>1,399</b>	<b>1,097</b>	<b>2,496</b>	<b>1,129</b>	<b>1,001</b>	<b>2,130</b>	<b>941</b>	<b>970</b>	<b>1,911</b>	<b>1,050</b>	<b>1,052</b>	<b>2,102</b>	<b>561</b>	<b>529</b>	<b>1090</b>
<b>Total Students</b>	<b>2,583</b>	<b>2,261</b>	<b>4,844</b>	<b>2,167</b>	<b>1,924</b>	<b>4,091</b>	<b>2,044</b>	<b>2,138</b>	<b>4,182</b>	<b>1,780</b>	<b>1,752</b>	<b>3,532</b>	<b>1089</b>	<b>1161</b>	<b>2250</b>

Source: Ministry of Education and Vocational Training

**Table 5.1.16: Distribution of Pupils in Public and Private Advanced Secondary Schools by Sex and Form, 2009- 2013**

(Percent)

Form	2009		2010		2011		2012		2013p	
	Male	Female	Male	Female	Male	Female	Male	Female	Male	Female
<b>Form V: Public</b>	50.6	49.4	54.1	45.9	51.1	48.9	48.8	51.2	46.8	53.2
Private	48.7	51.3	44.6	55.4	50.9	49.1	46.5	53.5	36.2	63.8
<b>Total</b>	<b>50.4</b>	<b>49.6</b>	<b>52.9</b>	<b>47.1</b>	51	49	<b>48.6</b>	<b>51.4</b>	45.5	54.5
<b>Form VI: Public</b>	57.9	42.1	53.2	46.8	49.9	50.1	52.2	47.8	51.2	48.8
Private	44.8	55.2	51.4	48.6	50.7	49.3	27.2	72.8	54.2	45.8
<b>Total</b>	<b>56</b>	<b>44</b>	<b>53</b>	<b>47</b>	<b>50</b>	<b>50</b>	<b>49.2</b>	<b>50.8</b>	<b>48.4</b>	<b>51.6</b>
<b>Total Students</b>	<b>2,583</b>	<b>2,261</b>	<b>2,167</b>	<b>1,924</b>	<b>1,780</b>	<b>1,752</b>	<b>2,044</b>	<b>2,138</b>	<b>1,089</b>	<b>1,161</b>

Source: Ministry of Education and Vocational Training

**Table 5.1.17: Form II Examination Results, 2009- 2013.**

(Number)

Category	Sex	Year				
		2009	2010	2011	2012	2013p
Candidates	Male	9,931	8,800	9,119	8,644	8,662
	Female	11,324	11,055	10,547	11,035	10,660
	<b>Total</b>	<b>21,255</b>	<b>19,855</b>	<b>19,666</b>	<b>19,679</b>	<b>19,322</b>
Passed	Male	5,180	4,889	4,975	4,427	4,805
	Female	6,335	6,673	6,066	6,768	6,678
	<b>Total</b>	<b>11,515</b>	<b>11,562</b>	<b>11,041</b>	11,195	<b>11,483</b>
Failed	Male	4,751	3,911	4,144	4,217	3,857
	Female	4,989	4,382	4,481	4,267	3,982
	<b>Total</b>	<b>9,740</b>	<b>8,293</b>	<b>8,625</b>	<b>8,484</b>	<b>7,839</b>

Source: Ministry of Education and Vocational Training

**Table 5.1.18: Distribution of Form II Examination Results by Sex, 2009- 2013**

(Percent)

Category	Sex	Year				
		2009	2010	2011	2012	2013p
Candidates	Male	46.7	44.3	46.4	43.9	44.8
	Female	53.3	55.7	53.6	56.1	55.2
Passed	Male	52.2	55.6	54.6	22.5	<b>100</b>
	Female	55.9	60.4	57.5	34.4	55.5
	<b>Total</b>	<b>54.2</b>	<b>58.2</b>	<b>56.1</b>	56.9	62.6
Failed	Male	47.8	44.4	45.4	21.4	<b>59.4</b>
	Female	44.1	39.6	42.5	21.7	44.5
	<b>Total</b>	<b>45.8</b>	<b>41.8</b>	<b>43.9</b>	<b>43.1</b>	37.4

Source: Ministry of Education and Vocational Training

**Table 5.1.19: Form IV Examination Results by Sex and Grade, 2009- 2013.**

(Number)

Grade	2009			2010			2011			2012			2013p		
	Male	Female	Total	Male	Female	Total	Male	Female	Total	Male	Female	Total	Male	Female	Total
I	26	14	40	60	29	89	33	27	60	5	11	16	74	56	130
II	102	64	166	102	72	174	62	45	107	44	39	83	283	251	534
III	656	546	1,202	736	592	1,328	384	388	772	186	39	99	637	652	1,289
IV	2,698	2,960	5,658	4,515	5,839	10,354	3,539	4,542	8,081	2,065	2,585	4,650	2,587	3,570	6,157
<b>Candidates</b>	<b>4,314</b>	<b>4,411</b>	<b>8,725</b>	<b>7,510</b>	<b>9,115</b>	<b>16,625</b>	<b>5,491</b>	<b>6,386</b>	<b>11,877</b>	<b>5,592</b>	<b>7,371</b>	<b>12,963</b>	<b>4,542</b>	<b>6,662</b>	<b>11,204</b>
<b>Passed</b>	<b>3,482</b>	<b>3,584</b>	<b>7,066</b>	<b>5,413</b>	<b>6,532</b>	<b>11,945</b>	<b>4,018</b>	<b>5,002</b>	<b>9,020</b>	<b>2,300</b>	<b>2,820</b>	<b>5,120</b>	<b>3,581</b>	<b>4,529</b>	<b>8,110</b>
<b>Failed</b>	<b>832</b>	<b>827</b>	<b>1,659</b>	<b>2,097</b>	<b>2,583</b>	<b>4,680</b>	<b>1,473</b>	<b>1,384</b>	<b>2,857</b>	<b>3,292</b>	<b>4,551</b>	<b>7,843</b>	<b>961</b>	<b>2,133</b>	<b>3,094</b>

Source: Ministry of Education and Vocational Training

**Table 5.1.20 Distribution of Form IV Examination Results by Sex and Grade, 2009- 2013**

(Percent)

Grade	2009			2010			2011			2012			2013p		
	Male	Female	Total	Male	Female	Total	Male	Female	Total	Male	Female	Total	Male	Female	Total
I	0.8	0.6	0.3	0.5	0.8	0.3	0.6	0.4	0.5	0.1	0.2	0.1	1.4	0.8	1.1
II	1.4	2.4	1.5	1.9	1.4	0.8	1.1	0.7	0.9	0.8	0.5	0.6	5.5	3.8	0.05
III	12.8	15.2	12.4	13.8	9.8	6.5	7.0	6.1	6.5	3.3	0.5	0.8	12.3	9.8	0.11
IV	62.4	62.5	67.1	64.8	60.1	64.1	64.5	71.1	68.0	37.0	35.1	72.0	49.9	53.6	52.0
<b>Passed</b>	<b>77.3</b>	<b>80.7</b>	<b>81.3</b>	<b>81.0</b>	<b>72.1</b>	<b>71.7</b>	<b>73.2</b>	<b>75.9</b>	<b>75.9</b>	<b>53.2</b>	<b>53.0</b>	<b>53.1</b>	<b>69.13</b>	<b>67.97</b>	<b>68.48</b>
<b>Failed</b>	<b>22.7</b>	<b>19.3</b>	<b>18.7</b>	<b>19.0</b>	<b>27.9</b>	<b>28.3</b>	<b>26.8</b>	<b>24.1</b>	<b>24.1</b>	<b>46.8</b>	<b>47.0</b>	<b>46.9</b>	<b>30.87</b>	<b>32.03</b>	<b>31.52</b>

Source: Ministry of Education and Vocational Training

**Table 5.1.21: Form VI Examination Results by Sex and Grade, 2008/09 – 2012/13**

(Number)

Grade	2008/09			2009/10			2010/11			2011/2012			2012/2013		
	Male	Female	Total	Male	Female	Total	Male	Female	Total	Male	Female	Total	Male	Female	Total
I	10	5	15	23	16	39	34	9	43	9	8	17	1	0	1
II	71	31	102	89	42	131	100	89	189	32	55	87	20	20	40
III	288	217	505	563	463	1,026	630	599	1,229	409	400	809	529	595	1,124
IV	320	243	563	241	222	463	245	234	479	211	217	428	222	249	471
<b>Candidate</b>	<b>1,085</b>	<b>874</b>	<b>1,959</b>	<b>1,190</b>	<b>1,118</b>	<b>2,308</b>	<b>1,041</b>	<b>918</b>	<b>1,959</b>	<b>898</b>	<b>915</b>	<b>1,813</b>	<b>1,010</b>	<b>1,057</b>	<b>2,067</b>
<b>Passed</b>	<b>689</b>	<b>496</b>	<b>1,185</b>	<b>916</b>	<b>743</b>	<b>1,659</b>	<b>1,009</b>	<b>931</b>	<b>1,940</b>	<b>661</b>	<b>680</b>	<b>1,341</b>	<b>772</b>	<b>864</b>	<b>1,636</b>
<b>Failed</b>	<b>142</b>	<b>105</b>	<b>247</b>	<b>169</b>	<b>131</b>	<b>300</b>	<b>181</b>	<b>187</b>	<b>368</b>	<b>237</b>	<b>235</b>	<b>472</b>	<b>238</b>	<b>193</b>	<b>431</b>

Source: Ministry of Education and Vocational Training

**Table 5.1.22 Distribution of Form VI Examination Results by Sex and Grade, 2007/08 – 2011/12**

(Percent)

Grade	2008/09			2009/10			2010/11			2011/2012			2012/2013		
	Male	Female	Total	Male	Female	Total	Male	Female	Total	Male	Female	Total	Male	Female	Total
I	2.1	1.8	2	2.9	0.8	1.9	1.3	1.1	1.2	1.0	0.9	0.9	0.1	0.0	0.05
II	8.2	4.8	6.7	8.4	8.0	8.1	6.5	5.4	6.0	3.6	6.0	4.8	2.1	1.9	1.9
III	51.9	53	52.4	52.9	53.6	53.2	43.7	47.4	45.4	45.5	43.7	44.6	52.4	56.3	54.4
IV	22.2	25.4	23.6	20.6	20.9	20.7	23.5	25.2	24.8	23.5	23.7	23.6	22.0	23.6	22.8
<b>Passed</b>	<b>84.4</b>	<b>85</b>	<b>84.7</b>	<b>84.8</b>	<b>83.3</b>	<b>84.0</b>	<b>76.0</b>	<b>79.1</b>	<b>77.4</b>	<b>73.6</b>	<b>74.3</b>	<b>74.0</b>	<b>76.4</b>	<b>81.7</b>	<b>79.1</b>
<b>Failed</b>	<b>15.6</b>	<b>15</b>	<b>15.3</b>	<b>15.2</b>	<b>16.7</b>	<b>16.0</b>	<b>24.0</b>	<b>20.9</b>	<b>22.6</b>	<b>26.4</b>	<b>25.7</b>	<b>26.0</b>	<b>23.6</b>	<b>18.3</b>	<b>20.9</b>

Source: Ministry of Education and Vocational Training

**Table 5.1.23: STD I - Form IV Pupil Teacher Ratio in Private and Public Schools, 2009- 2013**

Year	Public Schools			Private Schools			Total		
	Number of Pupils	Number of Teachers	Pupil Teacher Ratio	Number of Pupils	Number of Teachers	Pupil Teacher Ratio	Number of Pupils	Number of Teachers	Pupil Teacher Ratio
<b>2009</b>	287,467	9,798	29	13,455	929	14	300,922	10,727	28
<b>2010</b>	294,058	9938	30	16853	1059	16	310,911	10,997	28
<b>2011</b>	29,8927	10,513	28	20,616	1,209	17	319,543	11,722	27
<b>2012</b>	273,162	9,141	30	18068	1,195	15	291,230	10,336	28
<b>2013p</b>	277,291	9,894	28	20,039	1,524	13	297,330	11,418	25

Source: Ministry of Education and Vocational Training

**Table 5.1.24: STD I - Form VI Teachers in Public Schools by District, 2009- 2013**

District	(Number)				
	2009	2010	2011	2012	2013p
Kaskazini 'A'	908	990	1,047	975	932
Kaskazini 'B'	588	636	722	686	727
Kati	850	872	900	436	896
Kusini	376	373	374	363	379
Mjini	2,038	1,965	2,048	1,980	1,835
Magharibi	2,288	2,259	2,486	1,903	2,430
Wete	831	801	823	804	788
Micheweni	434	540	578	525	470
Chake Chake	739	733	731	706	722
Mkoani	746	769	804	763	715
<b>Total</b>	<b>9,798</b>	<b>9,938</b>	<b>10,513</b>	<b>9,141</b>	<b>9,894</b>

Source: Ministry of Education and Vocational Training

**Table 5.1.25: STD I - Form VI Teachers in Public and Private Schools by Training, 2009- 2013**

		(Number)				
Type of School		2009	2010	2011	2012	2013p
Public School	Trained	9,105	9,301	9,939	8,645	9,503
	Untrained	693	637	574	496	391
	<b>Total</b>	<b>9,798</b>	<b>9,938</b>	<b>10,513</b>	<b>9,141</b>	<b>9,894</b>
	% of Untrained	7.1	6.4	5.5	5	4.0
Private School	Trained	683	844	827	831	1,178
	Untrained	246	215	382	364	346
	<b>Total</b>	<b>929</b>	<b>1,059</b>	<b>1,209</b>	<b>1,195</b>	<b>1,524</b>
	% of Untrained	26.5	20.3	31.6	30	22.7
Total	Trained	9,788	10,145	10,766	9,476	10,681
	Untrained	939	852	956	860	737
	<b>Total</b>	<b>10,727</b>	<b>10,997</b>	<b>11,722</b>	<b>10,336</b>	<b>11,418</b>
	% of Untrained	8.8	7.7	8.2	8	<b>6.5</b>

Source: Ministry of Education and Vocational Training

## 5.2 Health Statistics

The information on health statistics is presented from tables 5.2.1 to 5.2.16 below. Table 5.2.1 shows that number of Assistant Medical Officers, Clinical Officers and local MD are increased. The results shows that nurse midwife is the leading cadre having 526` staffs followed by 294 PHN "B" staffs while there are other cadre such as Assistant Medical Officer (AMO), Dentist and Medical Doctor (MD) has minimum number of staff.

The number of out-patients in public hospitals recorded 237,293 in 2013, out of which 16,132 were from Mnazi Mmoja hospital compared to 94,808 in 2012. The number of in-patients recorded 60,933, where 27,654 patients were admitted at Mnazi Mmoja Hospital compared to 72,373. The maximum number admitted to Mnazi Mmoja Hospital is mainly due to the fact that it is referral Hospital. On other hand, most of death is also occurred at Mnazi Mmoja hospital in 2013 patients recorded 1,576 out of which 778 were male and 798 were female.

The number of drug affected people who were educated by the Commission for National Coordination and Drug Control has increased from 70 people in 2012 to 235 people to 2013; this indicates that nearly all reported persons affected by drugs were counselled. Out of the

total affected people, only 11.3 per cent were females and the rest were males. Magharibi is the leading district having large number of people affected by drugs (52.2 per cent) and most of these people are in age 26 – 35 years (Table 5.2.10 to 5.2.16). Gender disparity shows that most of clients living in sober houses are male (588) compared to female (28).

Magharibi is the leading district with the highest number of disability in 2013 (77 persons). Most of the reported persons with disability are youth of age group 30-39 years (Table 5.2.15).

**Table 5.2.1: Medical, Paramedical and Nursing Professionals, 2012-2013**

<b>Cadre</b>	<b>(Number)</b>	
	<b>2012</b>	<b>2013p</b>
Assistant Medical Officer (AMO)	54	56
Clinical Officer	130	185
Community Health Nurse	36	39
Dental Assistant	12	14
Dental Officer	7	11
Dental Therapist	2	9
Dentist	7	7
Gynaecologist	3	0
Health Assistant	73	78
Health Officer	197	213
Lab. Assistant	33	37
Lab. Chemical Technician	2	2
Lab. Scientist	3	4
Lab. Technician	193	212
Lab. Technologist	49	53
Medical Doctor (MD)	26	40
Medical Entomologist	1	1
Medical Lab. Scientist	1	1
Microbiologist	1	1
Microscopist	6	7
Nurse Anaesthetic	16	22
Nurse General	46	79
Nurse Midwife	472	526
Nurse Occupational Health	3	3
Nurse Ophthalmic	14	17
Nurse Orthopaedic	1	1
Nurse Paediatric	8	9
Nurse Psychiatrist	178	201
Occupational Therapist	1	1
Ophthalmic Clinician	3	3
Ophthalmic Surgeon	1	1
Optometrist	2	2
Orthopaedic Assistant	1	1
Paediatrician	3	6
Pathologist	1	1
Pharm. Assistant	40	1
Pharm. Auxiliary	3	6
Pharm. Dispenser	42	50
Pharm. Technician	59	3
Pharmacist	21	44
Public Health Nurse 'A'	7	62
Public Health Nurse 'B'	284	294
Physiotherapist	6	8
Radiographer	17	20
Radiographic Asst.	8	8
Radiologist	1	1
<b>Grand Total</b>	<b>1,880</b>	<b>2,375</b>

Source: Ministry of Health, Zanzibar

**Table 5.2.2: Medical Facilities by Category, 2009- 2013**

(Number)

		2009	2010	2011	2012	2013p
<b>Public Facilities</b>						
Primary level	PHCU	127	98	100	100	100
	PHCU+	N/A	35	34	34	34
	PHCC	4	4	4	4	4
Secondary level	District Hospital	3	3	3	3	3
Tertiary level	Special	2	2	2	2	2
	Referral	1	1	1	1	1
<b>Private Facilities</b>						
Private Hospital		3	3	3	3	4
Dispensary		62	72	72	72	70

Source: Ministry of Health, Zanzibar

**Table 5.2.3: Distribution of Public Health Facilities by District, 2013**

(Number)

District	Public Medical Facility						Private Medical Facility	
	Primary Level			Secondary level	Tertiary level			
	PHCU	PHCU+	PHCC	District Hospital	Special	Referral	Private Hospital	Dispensary
Kaskazini ‘A’	9	3	1	0	0	0	0	2
Kaskazini ‘B’	8	3	0	0	0	0	0	4
Kati	20	3	0	0	0	0	0	3
Kusini	7	3	1	0	0	0	0	0
Mjini	6	4	0	0	2	1	4	26
Magharibi	8	5	0	0	0	0	0	27
Wete	15	3	0	1	0	0	0	1
Micheweni	11	3	1	0	0	0	0	2
ChakeChake	8	2	1	1	0	0	0	4
Mkoani	13	2	0	1	0	1	0	1
Total	105	31	4	3	2	2	4	70

Source: Ministry of Health, Zanzibar

**Table 5.2.4: Aggregates of In-Patients and Out-Patients in Public Health Facilities  
2009-2013**

(Number)

Type of patients	2009	2010	2011	2012	2013p
Out-patients	288,201	366,942	395,964	379,224	237,293
In-patients	60,604	66,556	70,857	72,373	60,933
<b>Total patient</b>	<b>348,805</b>	<b>433,498</b>	<b>466,821</b>	<b>451,597</b>	<b>298,226</b>

Source: Ministry of Health, Zanzibar

**Table 5.2.5: In-patients and Out-patients by Public Hospital 2013**

(Number)

Hospital	2013					
	In-patients			Out-patients		
	Male	Female	Total	Male	Female	Total
<b>Unguja</b>						
Kivunge	679	2,656	3,335	23,710	23,111	46,821
Makunduchi	662	1,947	2,609	14,813	15,397	30,210
Mnazi Mmoja	20,762	6,892	27,654	8,519	7,613	16,132
<b>Sub Total</b>	<b>22,103</b>	<b>11,495</b>	<b>33,598</b>	<b>47,042</b>	<b>46,121</b>	<b>93,163</b>
<b>Pemba</b>						
Micheweni	1,066	2,947	4,013	8,927	11,627	20,554
Vitongoji	440	893	1,333	7,205	8,648	15,853
Abdallah Mzee	1,408	3,890	5,298	10,977	13,010	23,987
Chake Chake	2,475	7,294	9,769	19,264	24,247	43,511
Wete	1,882	5,040	6,922	16,847	23,378	40,225
<b>Sub Total</b>	<b>7,271</b>	<b>20,064</b>	<b>27,335</b>	<b>63,220</b>	<b>80,910</b>	<b>144,130</b>
<b>Grand Total</b>	<b>29,374</b>	<b>31,559</b>	<b>60,933</b>	<b>110,262</b>	<b>127,031</b>	<b>237,293</b>

Source: Ministry of Health, Zanzibar

**Table 5.2.6: In-patients and Out-patients by Public Hospital 2012**

(Number)

Hospital	2012					
	In-patients			Out-patients		
	Male	Female	Total	Male	Female	Total
<b>Unguja</b>						
Kivunge	2,843	644	3,487	40,916	33,419	74,335
Makunduchi	1,763	768	2,531	17,620	13,340	30,960
Mnazi Mmoja	30,125	10,982	41,107	47,156	47,652	94,808
<b>Sub Total</b>	<b>34,731</b>	<b>12,394</b>	<b>47,125</b>	<b>105,692</b>	<b>94,411</b>	<b>200,103</b>
<b>Pemba</b>						
Chake Chake	6,504	2,685	9,189	29,504	24,083	53,587
Micheweni	2,662	1,184	3,846	12,710	9,710	22,420
Vitongoji	810	388	1,198	8,203	7,320	15,523
Abdallah Mzee	3,457	1,383	4,840	21,274	17,072	38,346
Wete	4,444	1,731	6,175	26,132	23,113	49,245
<b>Sub Total</b>	<b>17,877</b>	<b>7,371</b>	<b>25,248</b>	<b>97,823</b>	<b>81,298</b>	<b>17,9121</b>
<b>Grand Total</b>	<b>52608</b>	<b>19,765</b>	<b>72,373</b>	<b>203,515</b>	<b>175,709</b>	<b>379,224</b>

Source: Ministry of Health, Zanzibar

**Table 5.2.7: In - Patients in Public Hospitals, 2009- 2013**

(Number)

Hospital	2009			2010			2011			2012			2013p		
	Male	Female	Total	Male	Female	Total	Male	Female	Total	Male	Female	Total	Male	Female	Total
<b>Unguja</b>															
Mnazi Mmoja	10,927	26,070	36,997	12,022	28,301	40,323	11,320	30,023	41,343	10,982	30,125	41,107	679	2,656	3,335
Kivunge	823	2,710	3,533	755	2,918	3,673	604	2,770	3,374	644	2,843	3,487	662	1,947	2,609
Makunduchi	501	789	1,290	636	887	1,523	734	1,487	2,221	768	1,763	2,,531	20,762	6,892	27,654
<b>Sub Total</b>	<b>12,251</b>	<b>29,569</b>	<b>41,820</b>	<b>13,413</b>	<b>32,106</b>	<b>45,519</b>	<b>12,658</b>	<b>34,280</b>	<b>46,938</b>	<b>12,394</b>	<b>34,731</b>	<b>47,125</b>	<b>22,103</b>	<b>11,495</b>	<b>33,598</b>
<b>Pemba</b>															
Wete	1,292	2,912	4,204	1,429	3,330	4,759	1,951	4,126	6,077	1,731	4,444	6,175	1,066	2,947	4,013
Micheweni	688	1,369	2,057	939	1,873	2,812	1,093	2,258	3,351	1,184	2,662	3,846	440	893	1,333
Chake Chake	2,263	4,843	7,106	2,420	5,995	8,415	2,605	5,756	8,361	2,685	6,504	9,189	1,408	3,890	5,298
Vitongoji	362	620	982	394	628	1,022	487	798	1,285	388	810	1,198	2,475	7,294	9,769
Mkoani	1,207	3,228	4,435	1,189	2,840	4,020	1,510	3,335	4,845	1,383	3,457	4,840	1,882	5,040	6,922
<b>Sub Total</b>	<b>5,812</b>	<b>12,972</b>	<b>18,784</b>	<b>6,371</b>	<b>14,666</b>	<b>21,028</b>	<b>7,646</b>	<b>16,273</b>	<b>23,919</b>	<b>7,371</b>	<b>17,877</b>	<b>25,248</b>	<b>7,271</b>	<b>20,064</b>	<b>27,335</b>
<b>Total</b>	<b>18,063</b>	<b>42,541</b>	<b>60,604</b>	<b>18,595</b>	<b>43,932</b>	<b>62,527</b>	<b>20,304</b>	<b>50,553</b>	<b>70,857</b>	<b>19,765</b>	<b>52,608</b>	<b>72,373</b>	<b>29,374</b>	<b>31,559</b>	<b>60,933</b>

Source: Ministry of Health, Zanzibar

**Table 5.2.7a: Top Ten Reported Diagnosis (Out-Patients) Zanzibar, 2013**

<b>Diagnosis</b>	Number
	<b>Total</b>
Upper Respiratory Tract Infections	384,217
Other diagnosis	223,590
Other skin disease	97,717
ENT head and neck	84,413
Pneumonia	67,373
Urinary Tract Infection (UTI)	49,504
Trauma / Injuries	46,450
Eye diseases	36,062
Intestinal Worms	32,931
Dental Diseases	31,870

Source: Ministry of Health

**Table 5.2.8: Reported Vaccination Coverage in Zanzibar, 2009-2013**

<b>Vaccination</b>	Number				
	<b>2009</b>	<b>2010</b>	<b>2011</b>	<b>2012</b>	<b>2013p</b>
BCG	54,273	56,940	56,780	64,002	69,101
DPT <sub>3</sub>	44,129	44,629	42,726	43,021	45,152
OPV <sub>3</sub>	37,777	43,900	42,222	37,290	44,402
MEASLES	46,385	38,846	45,387	49,266	49,340
TT2 +	43,370	38,464	17,048	34,997	42,506

Source: Ministry of Health

**Table 5.2.9: Reported Deaths in Public Hospitals Zanzibar, 2009- 2013.**

													Number		
	2009			2010			2011			2012			2013p		
Hospital	Male	Female	Total	Male	Female	Total	Male	Female	Total	Male	Female	Total	Male	Female	Total
Mnazi Mmoja	604	532	1,136	611	439	1,050	714	841	1,555	668	761	1,429	548	504	1,052
Kivunge	12	16	28	18	18	36	12	9	21	13	11	24	23	39	62
Makunduchi	6	4	10	7	9	16	14	15	29	9	10	19	13	9	22
Mwembeladu	N/A	0	0	NA	0	0	NA	1	1	NA	1	1	NA	0	0
Mental	2	0	2	0	0	0	0	0	0	1	0	1	2	1	3
Wete	31	28	59	47	22	69	46	39	85	42	54	96	39	59	98
Micheweni	34	26	60	33	22	55	47	28	75	45	43	88	33	32	65
Chake Chake	80	41	121	66	56	122	106	60	166	71	119	190	80	101	181
Vitongoji	4	5	9	11	4	15	4	2	6	3	4	7	4	5	9
Mkoani	38	41	79	35	25	60	55	41	96	37	53	90	36	48	84
<b>Total</b>	<b>811</b>	<b>693</b>	<b>1,504</b>	<b>828</b>	<b>595</b>	<b>1,423</b>	<b>998</b>	<b>1,036</b>	<b>2,033</b>	<b>889</b>	<b>1,056</b>	<b>1,945</b>	<b>778</b>	<b>798</b>	<b>1,576</b>

Source: Ministry of Health

**Table 5.2.10: Reported Drug Affected People, 2009- 2013**

Description	Sex	2009	2010	2011	2012	2013p
Counselling/Educated	Male	48	47	105	38	206
	Female	6	4	25	32	29
	Total	54	51	130	70	235
Admitted to Mental Hospital	Male	0	-	-	0	29
	Female	0	-	-	0	1
	Total	0	-	-	0	30
<b>Total</b>		<b>54</b>	<b>51</b>	<b>130</b>	<b>70</b>	<b>265</b>

Source: Commission for National Coordination and Drug Control

**Table 5.2.11: Distribution of Reported Drug Affected Persons by District at Unguja, 2009- 2013**

District	2009	2010	2011	2012	2013p
Kaskazin 'A'	0	1	-	1	6
Kaskazini 'B'	1	-	-	2	1
Kati	3	-	-	1	0
Kusini	0	-	-	0	1
Mjini	40	42	104	28	110
Magharibi	10	8	26	30	129
<b>Total</b>	<b>54</b>	<b>51</b>	<b>130</b>	<b>62</b>	<b>247</b>

Source: Commission for National Coordination and Drug Control

**Table 5.2.12: Distribution of Reported Drug Affected Persons by District at Pemba, 2013**

District	2013
Wete	3
Micheweni	2
Chake chake	8
Mkoani	5
<b>TOTAL</b>	<b>18</b>

Source: Commission for National Coordination and Drug Control

**Table 5.2.13: Distribution of Reported Drug Affected by Age Group 2009- 2013**

<b>Age Group</b>	<b>2009</b>	<b>2010</b>	<b>2011</b>	<b>2012</b>	<b>2013p</b>
15 – 25	4	5	8	11	40
26 – 35	42	34	75	40	130
36 – 45	8	10	47	15	46
46 – 55	0	2	0	4	24
56 +	0	0	0	0	25
<b>Total</b>	<b>54</b>	<b>51</b>	<b>130</b>	<b>70</b>	<b>265</b>

Source: Commission for National Coordination and Drug Control

**Table 5.2.14: Persons with Disability by District and Sex, 2013**

Disability type	Sex	Number										Total
		Physical	Multiple	Deaf Speech	Mental	Deaf	Blind	Hypocepholus	Albino	Epylepsy	Others	
Kaskazini ' A '	Male	4	4	1	3	4	2	0	0	0	1	19
	Female	4	2	1	3	11	0	0	0	0	1	22
Kaskazini ' B '	Male	8	3	1	0	0	0	0	0	0	0	12
	Female	4	3	0	0	1	1	0	0	0	0	9
Kati	Male	12	1	1	1	2	1	0	0	1	1	20
	Female	11	2	0	1	0	4	0	1	1	1	21
Kusini	Male	3	0	0	1	0	0	0	0	0	0	4
	Female	2	0	0	0	0	0	0	0	0	0	2
Mjini	Male	11	2	0	0	1	2	1	0	1	1	20
	Female	8	0	0	0	3	0	0	1	0	0	12
Magharibi	Male	25	4	0	3	3	4	0	2	0	1	42
	Female	15	8	0	4	3	1	0	3	0	1	35
Wete	Male	8	3	2	2	3	4	1	0	1	2	26
	Female	6	0	0	4	5	0	0	1	3	0	19
Micheweni	Male	18	7	5	5	3	7	1	2	2	0	50
	Female	2	3	4	4	4	5	1	1	2	0	25
Chake Chake	Male	16	6	5	7	3	2	0	0	1	0	40
	Female	11	3	3	2	1	0	1	1	6	1	29
Mkoani	Male	9	1	2	2	3	1	0	0	4	4	26
	Female	12	2	2	4	3	0	0	0	6	0	29
<b>Zanzibar</b>		<b>189</b>	<b>54</b>	<b>27</b>	<b>46</b>	<b>53</b>	<b>34</b>	<b>5</b>	<b>12</b>	<b>28</b>	<b>14</b>	<b>462</b>

Source: Zanzibar Association of People with Disable

**Table 5.2.15: Reported Number of Persons with Disability by Age Group and Type of Disability- Zanzibar, 2013**

<b>Age Group</b>	<b>Physical</b>	<b>Multiple</b>	<b>Deaf Speech</b>	<b>Mental</b>	<b>Deaf</b>	<b>Blind</b>	<b>Hypocepholus</b>	<b>Albino</b>	<b>Epylepsy</b>	<b>Others</b>	<b>Total</b>
00- 05	21	18	4	6	13	3	1	3	0	5	74
6-9	7	5	12	3	22	1	0	1	8	2	61
10-19	20	13	3	4	9	7	0	3	5	0	64
20-29	42	5	0	18	1	0	3	0	0	0	69
30-39	60	7	7	5	6	11	0	5	12	0	113
40-49	26	4	1	9	0	6	1	0	3	3	53
50+	13	2	0	1	2	6	0	0	0	4	28
<b>Grand Total</b>	<b>189</b>	<b>54</b>	<b>27</b>	<b>46</b>	<b>53</b>	<b>34</b>	<b>5</b>	<b>12</b>	<b>28</b>	<b>14</b>	<b>462</b>

Source: Zanzibar Association of People with Disable

**Table 5.2.15a: Children Cared by type of Centre and Sex 2009- 2013**

Type of Centre	Sex	Number				
		2009	2010	2011	2012	2013p
Mazizini Social Welfare	Female	26	29	26	17	16
	Male	26	22	22	19	20
	<b>Total</b>	<b>52</b>	<b>51</b>	<b>48</b>	<b>36</b>	<b>36</b>
SOS	Female	50	38	41	83	83
	Male	62	65	66	55	55
	<b>Total</b>	<b>112</b>	<b>103</b>	<b>107</b>	<b>138</b>	<b>138</b>
<b>Total</b>	Female	76	67	67	100	55
	Male	88	87	89	74	20
	<b>Total</b>	<b>164</b>	<b>154</b>	<b>156</b>	<b>174</b>	<b>174</b>

Source: Ministry of Social Welfare, Youth, Women and Children Development

**Table 3.2.15b: Old People Cared by type of Centre and Sex 2009- 2013**

Centre	Sex	Number				
		2009	2010	2011	2012 p	2013p
Sebleni	Female	40	40	41	38	31
	Male	26	24	22	20	19
	<b>Total</b>	<b>66</b>	<b>64</b>	<b>63</b>	<b>58</b>	<b>50</b>
Welezo	Female	17	14	8	9	11
	Male	37	34	28	31	28
	<b>Total</b>	<b>54</b>	<b>48</b>	<b>36</b>	<b>40</b>	<b>39</b>
Gombani	Female	0	1	0	0	0
	Male	0	1	1	2	1
	<b>Total</b>	<b>0</b>	<b>2</b>	<b>1</b>	<b>2</b>	<b>1</b>
Limbani	Female	0	1	1	1	1
	Male	0	7	6	4	7
	<b>Total</b>	<b>0</b>	<b>8</b>	<b>7</b>	<b>5</b>	<b>8</b>
Makundeni	Female	0	57	59	33	24
	Male	0	44	44	22	32
	<b>Total</b>	<b>0</b>	<b>101</b>	<b>103</b>	<b>55</b>	<b>56</b>
<b>Total</b>	Female	57	113	109	81	67
	Male	63	110	101	79	87
	<b>Total</b>	<b>120</b>	<b>223</b>	<b>210</b>	<b>160</b>	<b>154</b>

Source: Ministry of Social Welfare, Youth, Women and Children Development

**Table 5.2.16a: Number of Sober Houses by Sex of Residents in Zanzibar, 2013**

	Male	Female	Total
Unguja	6	1	7
Pemba	5	0	5
<b>Total</b>	<b>11</b>	<b>1</b>	<b>12</b>

Source: Commission for National Coordination and Drug Control

**Table 5.2.16b: Clients in Sober Houses in Zanzibar 2013**

	Number		
	Male	Female	Total
Unguja	462	28	490
Pemba	126	0	126
<b>Total</b>	<b>588</b>	<b>28</b>	<b>616</b>

Source: Commission for National Coordination and Drug Control

**Table 5.2.16c: Distribution of Clients in Each Sober House in Zanzibar 2013**

Sober House	Male	Female	Total
Detroit	92	0	92
Bububu	14	0	14
Mombasa	33	0	33
Twawabina	99	0	99
Bombay	0	28	28
Zanzibar Youth Forum	142	0	0
Mkoroshoni	29	0	29
Limbani	27	0	27
Kifumbikae	24	0	24
Jadida	26	0	26
Kifoi	20	0	20
Nyarugusi	82	0	82
<b>Total</b>	<b>588</b>	<b>28</b>	<b>616</b>

Source: Commission for National Coordination and Drug Control

**Table 5.2.16d: Clients in Each Sober House by Age Group and Sex in Zanzibar, 2013**

	Number		
Age Group	Male	Female	Total
15 – 25	37	0	37
26 – 35	304	23	327
36 – 45	189	5	194
46 +	58	0	58
<b>Total</b>	<b>588</b>	<b>28</b>	<b>616</b>

Source: Commission for National Coordination and Drug Control

### 5.3 Sports Statistics

The OCGS has managed to collect data on type of sport clubs registered, participation of the Zanzibar National Team in Challenge cup, number of football referees and number of football teams.

Table 5.4.1 shows type of sports club registered by district and type of sports Mjini has 140 registered clubs of football which is the leading district followed by other districts which have slight change between them. A total of 57 netball clubs, out of which 14 clubs are in Kaskazini A and other 14 are in Mjini and the remaining are distributed in other districts.

Participation of the Zanzibar National Team in Kagame Cup seems to improve as years ago but in this year Zanzibar not participated because of the war in Darfur (table 5.4.2).

Gender discrepancy is revealed in table 5.4.3, where by a number of male referees regardless having FIFA badge is more higher ( 16 person) compared to female (2 person).

**Table 5.4.1a: Type of Sports Associations Registered by District in Unguja, 2013.**

<b>Type of Sports</b>	<b>Kaskazini "A "</b>	<b>Kaskazini "B "</b>	<b>Kati</b>	<b>Kusini</b>	<b>Mjini</b>	<b>Magharibi</b>	<b>Total</b>
Football	56	55	60	58	140	48	417
Netball	14	11	8	5	14	5	57
Athletics	13	12	2	3	7	4	41
Basketball	3	11	3	4	6	3	30
Handball	8	8	5	3	8	4	36
Hockey	-	-	-	-	4	2	6
Swimming	-	-	-	-	2	2	4
Judo	3	2	4	2	19	6	36
Cycling	1	1	1	-	3	1	7
Volleyball	8	-	3	1	5	2	19
Badminton	-	-	-	-	1	2	3
Weightlifting	-	-	-	-	3	1	4
Squash	-	-	-	-	2	1	3
Wrestling	-	-	-	-	1	1	2
Karate	10	-	4	4	9	12	39
Playing Cards	2	2	1	1	17	13	36
Table Tennis	-	-	-	-	3	4	7
Lawn Tennis	-	-	-	-	1	2	3
Shooting	-	-	-	-	2	1	3
Chess	-	-	-	-	1	1	2
Criquet	-	-	-	-	3	-	3
Bao	5	8	12	10	20	15	70
Motorcross	-	-	-	-	6	-	6
ZABESE	2	3	5	6	18	14	48
Zanzibar Deaf Association	-	-	-	-	7	5	12
Pool Table	-	-	-	-	7	5	12
Special Olympics	1	1	3	1	5	3	14
Golf	-	-	-	-	3	-	3
Zanzibar Disable Association	1	1	1	1	5	3	12
Zanzibar Health for Sportsmen	-	-	-	-	2	-	2

Source: Ministry for Information, Culture, Tourism and Sports.

**Table 5.3.1b: Type of Sports Clubs Registered by District in Pemba, 2013.**

Type of Sports	Wete	Micheweni	Chake	Mkoani	Total
Football	28	20	30	23	101
Netball	5	2	10	7	24
Athletics	2	1	3	1	7
Basketball	1	-	2	3	6
Swimming	-	-	-	1	1
Judo	2	1	1	2	6
Cycling	-	-	-	1	1
Volleyball	2	-	1	3	6
Karate	3	4	2	6	15
Table Tennis	1	-	1	1	3
Karata	8	5	6	4	23
Bao	10	7	4	3	24
Motorcross	-	-	-	-	-
ZABESA	2	-	3	4	9

Source: Ministry of Information, Culture, Tourism and Sports

**Table 5.3.2 Participation of Zanzibar National Team in CECAFA, 2009- 2013**

	2009	2010	2011	2012	2013p
Host Country	Uganda	Kenya	Tanzania	Uganda	Sudan
Position reached	Quarter Final	Third Place	Quarter Final	Third Place	*
Origin of Coach	Egypt	Zanzibar	Egypt	Zanzibar	*

Source: Ministry of Information, Culture, Tourism and Sports

Note: \* Zanzibar did not participate due to Darfur war

**Table 5.3.3 Number of Referees by FIFA Badges and Sex, 2010- 2013**

Referees	2010			2011			2012			2013p		
	Male	Female	Total	Male	Female	Total	Male	Female	Total	Male	Female	Total
With FIFA Badge	5	1	6	5	1	6	5	1	6	4	1	5
Without FIFA Badge	11	1	12	93	4	97	93	5	98	50	10	60
<b>Total</b>	<b>16</b>	<b>2</b>	<b>18</b>	<b>98</b>	<b>5</b>	<b>103</b>	<b>98</b>	<b>6</b>	<b>104</b>	<b>54</b>	<b>11</b>	<b>65</b>

Source: Ministry of Information, Culture, Tourism and Sports

**Table 5.3.4: Zanzibar Football Players' Playing Outside Zanzibar, 2010- 2013**

(Number)

Country	Club	Players			
		2010	2011	2012	2013p
Vietnam		1	1	1	1
Egypt	Alcanal-cairo	1	1	1	1
United Kingdom	Chesea (Youth Team)	1	1	1	1
Qatar	Al mudheib	2	1	1	1
Tanzania Mainland	Azam S.club	3	8	12	12
	Yanga	2	1	3	3
	Simba	1	1	1	1
	J.K.Oljero	0	7	7	7
	Coastal Union	0	4	4	4
	Villa Squard	0	2	2	2
	African Lyon	0	2	2	2
	Mtibwa	1	0	0	0
	Moro United	1	0	0	0
	Pan Africa	1	0	0	0
<b>Total</b>		<b>14</b>	<b>29</b>	<b>35</b>	<b>35</b>

Source: Ministry of Information, Culture, Tourism and Sports

**Table 5.3.5: Number of Football Teams by Division, 2010- 2013**

Division	2010	2011	2012	2013p
Premier League	12	12	12	12
First Division	24	<b>26</b>	26	26
Second Division -Taifa	40	46	53	53
Second Division -District	200	350	390	392
Third Division	100	200	257	260
Fourth Division	50	100	123	123
<b>Total</b>	<b>426</b>	<b>734</b>	<b>861</b>	<b>866</b>

Source: Ministry of Information, Culture, Tourism and Sport